

Berkeley Public Policy

The Goldman School

*How a **Better** Future Gets Made*



GSPP

2022-2023



THE
GOLDMAN SCHOOL
OF
PUBLIC POLICY

Welcome

Welcome to UC Berkeley's Goldman School of Public Policy (GSPP). UC Berkeley is the nation's top public university, home to the Free Speech Movement, dozens of Nobel laureates, and a model of public higher education for more than 150 years. As a top-ranked school of public policy, GSPP embodies the intellectual rigor, entrepreneurial spirit, public mission, and social commitment characteristic of UC Berkeley.



GSPP is a place where passions, ideas, and knowledge converge to create a toolkit for the hard work of democracy. Our students, faculty, staff, and alumni are prepared to be fearless leaders of change, grounded in a spirit of shared success and communal support.

GSPP's degree programs are led by an outstanding faculty of interdisciplinary scholars and experienced professionals who push the boundaries of knowledge and applied practice. Our faculty are economists, political scientists, psychologists, statisticians, and public managers and analysts who support intellectually diverse approaches to studying public policy. In addition, we have an experienced and caring staff to help students navigate their time at GSPP, and a dedicated alumni network to support your future success.

The tools developed at GSPP help to understand, engage, and solve real-world problems. Tools to address climate change; criminal justice reform; technology, cybersecurity and artificial intelligence; racial justice; social policy; global development; election and voting; and government performance, are among the areas where we focus our attention.

Ultimately, we are building a robust community of outstanding public servants, policy leaders, and creative thinkers. We cultivate an intellectual community dedicated to policy analysis and innovation, with an eye toward furthering justice, ethics, fairness, and results that improve the future of our society. In short, we seek to change the world by fostering a passion for public improvement, a deep curiosity for generating and promoting knowledge about policy, and a sense of altruistic concern for communities local, domestic and global.

Studying and analyzing public policy issues can transform your life and make you a better person, but more importantly, it can transform the lives of others and give them opportunities to be better as well. It is our intention to support you as we pursue our shared mission of achieving excellence, community, and justice.

A handwritten signature in black ink, appearing to read "D. Wilson".

David C. Wilson

DEAN, GOLDMAN SCHOOL OF PUBLIC POLICY AT UC BERKELEY

gspp

A tall, illuminated clock tower stands prominently on the left side of the image. The tower is lit from within, casting a warm glow. It features a clock face on its side and a decorative top section with a pointed roof. The background shows a cityscape at dusk, with lights reflecting on a body of water and distant mountains under a soft, orange and blue sky.

THE GOLDMAN SCHOOL OF PUBLIC POLICY IS ONE OF
THE PREMIER POLICY SCHOOLS – RANKED AMONG
THE BEST IN THE WORLD.

world

CONTENTS

■ Overview

- 6 Public Policy at U.C. Berkeley
- 8 Frequently Asked Questions about Public Policy or GSPP

■ Degree Programs

- 10 Master of Public Policy (MPP)
 - 20 Master of Development Practice (MDP)
 - 24 Master of Public Affairs (MPA)
 - 28 Ph.D. in Public Policy
- MPP Concurrent Degrees with the School of:
- 31 Public Health (MPP/MPH)
 - 31 Law (MPP/JD)
 - 32 Engineering (MPP/MS)
 - 32 Global Studies (MPP/MA)
 - 32 Energy and Resources Group (MPP/MA or MPP/MS)
 - 34 Social Welfare (MPP/MSW)

■ Non-Degree Programs

- 36 Berkeley Institute for Young Americans
- 37 Berkeley Opportunity Lab
- 37 California Policy Lab
- 37 Center for Environmental Public Policy
- 38 Center for Security in Politics
- 38 Center on Civility and Democratic Engagement
- 38 Center for Studies in Higher Education
- 39 Food Labor Research Center
- 39 Global & Executive Programs
- 40 Global Policy Lab
- 40 Institute for Research on Labor Employment
- 40 Risk Resilience Research Lab
- 41 The Possibility Lab
- 41 The Public Policy and International Affairs (UCPPIA)
Junior Summer Institute at U.C. Berkeley

Faculty and Administration

- 42 Faculty and Administration
- 57 Student Services
- 58 Career Services
- 60 Student Organizations

class



Overview

PUBLIC POLICY AT U.C. BERKELEY



During the late 1960s, educators nationwide recognized the need for a new kind of public leadership and a new type of graduate education, fostering the vision, knowledge, and practical skills to empower a new generation of policy makers. GSPP, founded at the University of California, Berkeley in 1969, was one of the nation's first graduate programs of its kind. Today it is ranked among the very top policy programs in the country and is recognized nationally and internationally as a source of incomparably qualified professionals in the field.

Embracing the realms of both domestic and international policy, the School prepares students for careers including policy analysis, program evaluation, political leadership, and management and planning. GSPP graduates enjoy an outstanding rate of employment and career advancement, working in government, in the private and nonprofit sectors, in research organizations, and as consultants worldwide.

GSPP currently offers four programs: 1) the two-year Master of Public Policy (MPP) program, with a core curriculum emphasizing practical and applied dimensions of policymaking 2) the Master of Development Practice (MDP), which offers a multidisciplinary, constructivist, skills based approach to tackling challenges in the rapidly evolving global development landscape 3) a one-year Master of Public Affairs (MPA) for mid-career professionals 4) and a Ph.D. in Public Policy program for a small number of students, who seek careers in academia and research. Doctoral students pursue highly individualized programs and work closely with faculty members at GSPP and throughout the Berkeley campus.



Given the relatively small class size, students enjoy a unique intimacy and camaraderie with one another and with the faculty. Teamwork rather than competition is encouraged informally and through group projects; the faculty believes that this approach develops skills in negotiation, cooperation, and consensus building, all essential to effective public leadership.

As part of GSPP's multidisciplinary approach, the School's faculty are drawn from the fields of economics, political science, law, sociology, social psychology, demography, architecture, engineering, and public policy. Faculty members meet regularly and work to coordinate assignments so that students' course loads are well-integrated and well-paced. Most faculty members hold full-time appointments at the School and all share a commitment to maintaining the quality of the overall program.

Life in Berkeley

Berkeley's location provides easy access to the cultural and recreational offerings of northern California. San Francisco is a short drive across the Bay Bridge or a quick trip on Bay Area Rapid Transit (BART). The scenic coastline of Carmel and Big Sur, the vineyards of Napa and Sonoma counties, and the lakes and forests of the Sierra Nevada are just a few hours away. The hills above the campus feature popular trails for hikers, runners and cyclists. A 10-minute drive will take you to Tilden Park, which is part of the East Bay Regional Parks system, a greenbelt extending 21 miles through the East Bay Hills.

The Bay Area climate is moderate year-round, with temperatures seldom dropping below 40°F in the winter and only rarely exceeding 77°F in the summer. The warmest months are September and October, when temperatures occasionally soar into the 90s.

Distinguished Speakers and Special Events

GSPP gives students the opportunity to interact with practitioners and scholars working at the leading edge of public policy. In addition, the Goldman School collaborates with University of California Television to produce original content for the UCTV Public Policy channel. Find these events and more on the Goldman School's Public Policy Channel. <http://uctv.tv/public-policy>

A selection of 2021-22 Events

Fighting Poverty with SNAP: A Framework to Bolster the Social Safety Net

Professor Hilary Hoynes and panelists discuss the urgent need to bolster the social safety net to fight poverty in the U.S.

9/11 20th Anniversary: Restaurant Worker and Reunion Memorial

Saru Jayaraman and One Fair Wage convene a very special memorial honoring the workers of Windows on the World, the restaurant at the top of the World Trade Center, on the 20th Anniversary of 9/11.

Neo-Nationalism and Universities

A conversation with author John Douglass on the rise of neo-nationalism and its impact on leading national universities.

From Cal Student to Mayor

The Center on Civility & Democratic Engagement (CCDE) at the Goldman School of Public Policy presents a special 2021 UC Berkeley Homecoming lecture featuring Berkeley Mayor Jesse Arreguin.

The United States Pandemic Response: Lessons from the H1N1 Pandemic of 2009

Former Homeland Security Secretary Janet Napolitano and former Health and Human Services Secretary Kathleen Sebelius discuss the H1N1 Pandemic of 2009 and what lessons that pandemic might have for our current situation.

Campus Conversation with Dean David C Wilson

Dean David C. Wilson speaks with UC Berkeley's Dan Mogulof about his vision for the Goldman School of Public Policy.

One Fair Wage: Book Talk and Policy Panel Discussion

Saru Jayaraman, President of One Fair Wage, discusses how the COVID-19 pandemic has

exacerbated pre-existing wage and income inequality in California and nationwide.

Emergent Technologies: Friend or Foe?

Former Homeland Security Secretary Janet Napolitano and Senator Mark Warner discuss the risks and opportunities of emergent technologies for voting, political engagement, and more.

Racial Resentment in the Political Mind: Book Launch

In their new book, Dean David C. Wilson and Notre Dame Professor of Political Science Darren Davis explore the concept of racial resentment.

Crisis in Ukraine:

The Brink of Nuclear Catastrophe?

The Institute of International Studies and the Goldman School of Public Policy host a special panel discussion to assess the nuclear risks in the fast-moving Ukraine crisis.

CA100 Report Launch: Transportation, Housing, Energy, Environment & Natural Resources, and Technology

California 100, a new statewide initiative being incubated at the University of California and at Stanford, unveiled the initiative's first round of issue and future scenario reports focused on these policy areas involving California's infrastructure future.

2022 Wildavsky Forum For Public Policy

John Jost of NYU provides a timely and thought-provoking discussion of social psychology's insights into the ever-widening political divide in the U.S. and the world.

Military Applications of AI Technologies: Pathways to Governing Risk

Professor Janet Napolitano of the Center for Security in Politics and Dr. Robin Geiss of the UN Institute for Disarmament discuss the military applications and implications of AI technologies.

Frequently Asked Questions -

ABOUT PUBLIC POLICY AT GSPP

... public policy analysis is “client-oriented advice relevant to public decisions and informed by social values.”



Pictured above: Professor Rucker Johnson

What is Policy Analysis?

Public policy analysis aids problem solving in the public, private, and non-profit sectors. People have analyzed policies for centuries; however policy analysis as a systematic, formal undertaking is still a fairly new field of endeavor and thoughtful people differ about exactly what it is.

In their standard text book *Policy Analysis Concepts and Practice (fourth edition)*, Professor David Weimer ('75 Ph.D. '78) and Professor Aidan Vining ('78 Ph.D. '80) offer a good definition: public policy analysis is “client-oriented advice relevant to public decisions and informed by social values.”

Policy analysts provide information and advice to public officials, the press, policy advocates, non-profit and private sector decision-makers, and citizens generally to help them choose, design and implement better public policies. To do this well requires a series of skills; teaching these skills constitutes the core curriculum of GSPP.

How do public policy and public administration programs differ?

Public administration, developed in the early 1900s, is a special field of study within the academic discipline of political science. It emphasizes the structure and operation of bureaucracies and organizations, including budgeting, personnel, and formal and informal internal controls. Some public administration programs include study of the special management skills required in governmental (as distinct from private) organizations.

Public policy is a newer field, developed in the late 1960s, whose theories and methods draw upon a variety of disciplines, such as economics, political science, statistics, and other social sciences. Its central focus is on the environment, substance, and effects of policies. Within that context, bureaucracies and organizations are examined as major sites for policy formulation, advocacy and implementation. Both public policy and public administration programs are relevant to the broad profession known generally as public management or public affairs.

Does the GSPP program train generalists or specialists?

The School first aims to train generalists, in the sense of providing basic policy skills needed in a variety of policy positions and across a wide range of policy issues. Having learned and applied the basic skills in the School's program, graduates are able to familiarize themselves rapidly with the details of a specific policy area relevant to their particular job. It would not be easy, however, for policy area specialists who lacked these basic policy skills to develop them once on the job. Feedback from alumni and employers confirms the soundness of providing an education for generalists. However, students have the flexibility to specialize by concentrating their electives and practical experience projects in a policy area of their choice or completing a concurrent degree.

The variety of positions held by GSPP alumni reflect the multidisciplinary skills possessed by GSPP graduates and the different types of policy roles sought by individual graduates.

How does GSPP treat the political dimensions of public policy?

The School believes that to be effective in the policy world, the evaluation of policy choices should take closely into account the political setting for the making and implementation of policy. To have significant impact, an analysis of policy options must often go beyond technical competence and include sensitivity to the political environment of the policy issue and of the decision maker. Hence GSPP stresses such concerns as the political feasibility of policy alternatives, value and ideological conflicts, and the dynamics of organizational behavior as they affect policy implementation.

48-Hour Project

Each year, first-year students write an "issue memo" to a postulated, but real "client" about some issue they know little or nothing about and do so on a 48-hour deadline. Topics are developed by the faculty and assigned to students randomly.

The exercise is intended to simulate a real-life work environment in which rapid-response and "land-on-your-feet" skills are at a premium.

Designed by Professor Eugene Bardach of the GSPP faculty, the 48-hour project is an annual rite of passage signaling the beginning of the students' second semester.



U.C. Berkeley



"The training in economics from Professor Lee Friedman and public policy analysis from then-dean Aaron Wildavsky profoundly changed my approach to legislation and public policy. At GSPP, I learned how to evaluate and understand the economic motives behind those who did not support a strong environmental position."

Ned Helme M.P.P. '77

Founder and Former President
Center for Clean Air Policy
Washington, DC

Senior Advisor
Goldman School of
Public Policy
Center for Environmental Policy

Degree Programs

MASTER OF PUBLIC POLICY



The MPP degree is earned in a two-year, full-time program consisting of a core curriculum, an introductory to policy analysis group project, a full-time policy internship in the summer after completion of the first year, a second-year advanced policy analysis project (master's thesis), and elective courses chosen from those available on the campus and at GSPP.

The program emphasizes practical and applied dimensions of policy-making and implementation, encouraging students to develop skills in:

- defining policy issues to make them more intelligible to officials in the public, private or non-profit sector
- providing a broader perspective for assessing policy alternatives
- examining techniques for developing policy options and evaluating their social consequences
- developing strategies for the successful implementation of public policies once they have been adopted

Given the relatively small class size of the MPP, the School's approach to teaching emphasizes teamwork, cooperation, and interaction among students and with the faculty. Students work,

either as individuals or in small groups, on real policy problems for real clients under close faculty supervision.

More specifically, the curriculum is designed to enable students to achieve the following:

- skill in written communication and verbal reporting
- an understanding of political institutions and processes, strategies, and skills associated with policy creation and adoption
- knowledge of the organizational and bureaucratic structures involved in program development and implementation
- skill in application of economic analysis to questions of economic trade-offs, policy choice and efficiency
- familiarity with cost-benefit analysis and other

- applications of quantitative analysis and modeling, including the use of statistical software
- an understanding of social science methodologies for dealing with problems of data collection, analysis, and program evaluation
 - the ability to apply legal analysis where appropriate to the creation and implementation of public policy and to recognize the role of courts and administrative law in program development and implementation

Core Curriculum

The core courses emphasize practical applications of analytical skills and encourage students to “learn by doing” through numerous exercises and projects conducted in teams and individually. Fieldwork activities are also a part of the core curriculum, involving real clients, a written report, and oral briefings on the report. In addition, colloquia with outside speakers are held frequently, further examining some of the policy issues treated in the core courses.

Useful preparation for GSPP’s core curriculum would include some familiarity with microeconomics, the American political process, statistics, and computer literacy. One of the core courses is a full year’s work in economics, which assumes some knowledge of calculus. Entering students without that knowledge or who want to refresh their applied mathematical skills are urged to take an intensive Math Review course given by the School just before the fall term.

If you have specific questions about the adequacy of your academic preparation for the program, please contact the School’s admissions office at mpadm@berkeley.edu.

Introduction to Analysis, Equity, & Policy (PP 200A-200B) Students bring together the skills learned in other core courses, working in teams to solve real-life problems for real clients.

The Economics of Public Policy Analysis (PP 210A-210B) Concepts of microeconomic behavior of producers, consumers, and government agencies are applied to specific policy areas. The effects of policy alternatives are assessed by such criteria as the efficiency and equity of resource allocation, impact on income distribution, and effectiveness in achieving policy goals.

Law and Public Policy (PP 220) This course seeks to prepare future public policy leaders to understand the historic and current role of the US legal system in constructing, defining, and constraining evolving public values and policies. In addition, students will examine strategies to advance public service moral imperatives in the midst of legal constraints. Ultimately, this course seeks to prepare students to advance their public policy priorities and values when confronted with the realities of laws that are out of alignment with the evolving needs of US democratic society.

Politics and Policy-Making in Comparative Perspective (PP 230) This graduate seminar provides an introduction to the relationship between politics and policy-making in developing countries. Using India as a guide, we will examine the political institutions underlying the policy process and the role played by groups with diverse policy interests. In doing so, we will evaluate the characteristics of political competition and the dynamics of political participation in highly dynamic contexts.

Decision Analysis, Modeling, and Quantitative Methods (PP 240A-240B) Students learn and apply quantitative methods including cost-benefit analysis; statistical and econometric analysis of policy-relevant data; survey design and interpretation; and formal policy models based on decision theory.

The Politics of Public Policy (PP 250) The influence of political and organizational factors on all stages in the policy process is examined: recognizing when a policy problem exists; developing alternative responses; assessing political feasibility in choosing among policy alternatives; gaining acceptance of the preferred alternative; ensuring effective implementation of adopted policies; evaluating their effects; and coping with unexpected consequences. Students gain skill in effective negotiation and communication through case studies and dynamic role-playing exercises.



U.C. Berkeley



“GSPP is unique among public policy schools. Not only does it develop analytical and quantitative skills, but students come away with a keen appreciation for the political context of policy analysis. I found my training valuable every day in my work with the California Legislature.”

Elizabeth Hill M.P.P. '75
Former Legislative Analyst of California
Sacramento, CA

Degree Programs

MASTER OF PUBLIC POLICY



Pictured below: Professor Hilary Hoynes

Sample Course Structure for the MPP

First Year

FALL

PP 200A

Foundations for Policy Analysis

SPRING

PP 200B

Professional Policy Practice

PP 210A

The Economics of Public Policy Analysis

PP 210B

The Economics of Public Policy Analysis

PP 240A

Decision Analysis, Modeling, and Quantitative Methods

PP 240B

PP 250

The Politics of Public Policy -or-
PP 230 Politics and Policy-Making
in Comparative Perspective

Elective Course

Summer Policy Internship (required)

Second Year

Elective Course

PP 205

Advanced Policy Analysis – Thesis Seminar

Elective Course

PP 299

Independent Study in Preparation for
the Advanced Policy Analysis

Public Policy Core Elective

PP 273: Public Management and Policy
Implementation -or- PP 220: Law and Public
Policy -or- PP 265: Race and Public Policy

Elective Course

Elective Course

—

Public Management and Policy Implementation (PP 273)

This course introduces graduate students to the central elements of public management and policy implementation. We will focus on three key challenges that public managers face: managing program performance; managing people; and managing crises. Using both academic literature and case studies, the course will train students how to realistically use data and evidence in government and how to write and negotiate effectively in the public sector. Material is drawn from national, state, local, and international settings.

Race and Public Policy (PP 265)

Race & Public Policy will examine the US history of public policy rooted in structural barriers designed to keep certain groups from reaching their full potential. The class considers the historical impact of systemic racism on communities and how the legacy of stolen land and human bondage persists in exclusionary government policies which generate, maintain, and enforce inequitable systems over time and across generations. The class provides the policy analyst with the tools to recognize, analyze, and understand the operation of inequitable systems, which will require a racial analysis that can be applied historically, in the present, and to the future.

Advanced Policy Analysis Titles

Drawn from projects completed during recent years, this list illustrates the range and variety of projects.

- Barriers and Opportunities for Long-Duration Energy Storage in California
- An Assessment of California's Options to Reduce Cropland Greenhouse Gas Emissions
- Santa Fe Electric Utility Municipalization: Long-Term Policy Options for Reducing Carbon Dioxide Emissions
- Enhancing Chile's Work Subsidy for Women
- Cracking Down on Identity Theft: New Challenges for Law Enforcement Agencies
- Designing Local Welfare-to-Work Systems: Federal Funding Options
- Pros and Cons of Privatizing Solid Waste Collection Services in Mexico
- The Costs and Benefits of Job Training in the Elder Care Market
- Analysis of Frequent Winners in Small Business: A Case Study of California Firms
- Ensuring Contraceptive Supply in Ethiopia and Sudan: The Role of the Packard Foundation Population Program
- Increasing Opportunities for Adolescent Girls: An Evaluation of AGAL's Malawi and Liberia Programs
- Controlling Street Prostitution in Oakland: What the Oakland Police Department Can Do to Improve Current Law Enforcement Policies
- Supporting California's Wildlife: An Evaluation of Funding Alternatives for California's Department of Fish and Game
- Raising Low Pay in a High Income Economy: The Economics of a San Francisco Municipal Minimum Wage
- Children of Arrested Parents: Strategies to Ensure Their Safety and Well-Being
- Russia's Regional Nuclear Warhead Storage Facilities: Problems and Solutions
- The Future of San Francisco's Public Electric Vehicle Chargers
- Delinquency Risk Assessment: Improving the Performance of Home Mortgages
- Addressing California's Overcrowded Schools: Equity in the State's Distribution of Funds for School Construction
- Pricing the Carbon Externality in Energy Storage
- Housing Voucher Portability in Alameda County: A Caseload Analysis of Clients and Cost Pressures
- Estimating the External Costs of Driving in San Francisco
- The Emergency Food Assistance Program in California: Opportunities for Reform
- Cost-Effectiveness Analysis of Solar Policy in Japan: Implications for Greenhouse Gas Reduction and Job Creation in Japan
- Addressing the Marina Concessions Contract Backlog at Lake Mead National Recreation Area
- Transforming Failed Prohibition to Responsible Regulation: Establishing a System for the Taxation and Regulation of Marijuana in California
- A Method to Identify At Risk Students and Successful Teachers: Dropout Prevention in Oakland Unified School District
- Public Health Strategies to Improve Public Safety: An Evaluation of the East Palo Alto Police Department's Fitness Improvement Training (FIT) Zone Program
- Funding Education Loans in the Developing World: A Framework For Identifying Potential Partners
- Fee Feasibility Study for Mojave National Preserve: Recommendations for Redesigning MOJA's Recreation Fee Program



U.C. Berkeley



"GSPP gave me the confidence to become an entrepreneur. In my career, I have founded two health care consulting firms: Health Technology Associates and my own health care reimbursement consulting firm with clients in the biotechnology, device, and pharmaceutical industries. Managing a consulting practice is challenging, but GSPP's curriculum gave me the analytic rigor I needed to run a company and provide expert advice to my clients."

Maren D. Anderson M.P.P. '79
President
MDA Consulting Inc.
Boston, MA

Degree Programs

MASTER OF PUBLIC POLICY

Our students address real-world problems and have versatile career opportunities in the public, private and non-profit sectors.

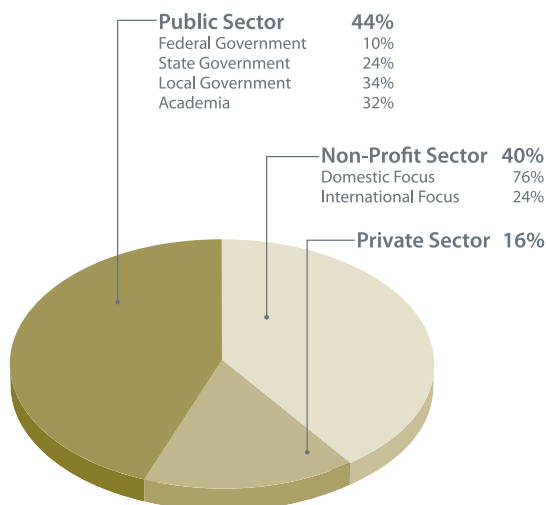
Summer Policy Internship Students are required to complete a policy internship during the summer between the first and second year of study. Students choose positions as advisors to policy-makers and leaders in all levels of government, non-profit organizations, and the private sector – both domestically and internationally. Students enrolled in concurrent degree programs that require a summer internship are exempt from this GSPP requirement.

Advanced Policy Analysis (PP 205, PP 299) The APA project is an intensive study of a significant policy issue of the student's choice. Students secure their own project for a specific client in a public, non-profit or private policy organization, and sometimes the student is paid for the work. For some students, the project is an outgrowth of the summer internship or may lead to a full-time position with the organization upon graduation.

Students conduct their projects as members of an APA seminar, which provides them with a faculty supervisor and a peer group able to supply constructive suggestions. When the completed analysis is found satisfactory by the faculty, it then serves as the student's required thesis. Frequently, the specific policy recommendations made in these analyses are adopted and implemented by the client.

Summer Internship Statistics, 2022

Visit <http://gspp.berkeley.edu/career-services/alumni-graduation-facts/gspp-employment-statistics> for previous year data



Elective Courses

Most of the students' second-year program consists of elective courses of individual choice relevant to the study of public policy. The School provides students with information on course possibilities around the campus, and each student determines a set of courses in consultation with a faculty advisor.

Students can choose electives from the full array of courses offered by Berkeley's academic departments and professional schools and colleges, as well as courses taught by GSPP faculty. With nearly 300 degree programs, Berkeley offers opportunities for advanced study in a vast range of fields. The following list, far from exhaustive, indicates some of the elective areas that are of particular relevance for public policy students:

Berkeley School of Law. Education: Immigration Law; Law and Social Justice.

Energy and Resources Group. Energy and Society; The Politics of Energy and Environmental Policy; Energy Economics.

Department of Economics. Economics of Public Enterprises; Public Finance.

Department of Political Science. Public Organization Theory; Public Policy and Decision Theory

Department of City and Regional Planning. The Urban Planning Process; Planning and Governmental Decision-Making; Introduction to Housing Analysis; Theory, History, and Practice of Community Development; Policy Analysis and Program Evaluation for Social Planning.

School of Education. Education Policy Analysis; Organizational Aspects of Planning and Regulation; Education, Politics and Government.

Global Studies. Global Poverty; Fundamentals of Economic Theory; Theories of Development and Political Change; Comparative Political Economy; International Economic Development Policy.

School of Public Health. New Boundaries for Health Policy and Planning; Legislation and Organization for Health and Social Services; Organization Theory and Health Institutions; International Health Economics.

School of Social Welfare. Social Policy and Social Welfare; Development of Social Service Programs; Processes of Community Planning and Organizing.

Public and Nonprofit Management. Public Sector Accounting; Financial Management; Managers and Management.

Haas School of Business. Business and Public Policy; Management in the Public and Nonprofit Sectors; Labor-Management Relations in the Public and Nonprofit Sectors; Collective Bargaining; The Interaction of Business and Government.

GSPP. Elective courses offered by GSPP also provide opportunities for focused study in specific policy fields. Most courses are taught by regular GSPP faculty and some by visiting faculty, often policy practitioners. A list of current GSPP electives can be found at <https://gspp.berkeley.edu/programs/course-information>.

Career Opportunities

GSPP MPP graduates are equipped with strong quantitative and analytical skills, and the ability to apply policy theory to solve real-world problems. Today, GSPP alumni hold positions as analysts and leaders in the public, non-profit and private sectors, both nationally and internationally, with the common goal of making a difference for the public good. The versatility of the Goldman School of Public Policy MPP degree opens a multitude of doors for the GSPP graduate. Alumni work as policy analysts; professional staff for political leaders and committees in all levels of government; program staff for international multilateral organizations; researchers and consultants in private firms; or in a variety of public and non-profit sector agencies and a growing number of private corporations. GSPP alumni continue throughout their careers to become executive directors, CEOs, presidents, and political leaders throughout all sectors.

Please visit <https://gspp.berkeley.edu/career-services/alumni-graduation-facts> for current and previous year full-time employment statistics.

MPP Admissions

GSPP recognizes that a student population that reflects the most diverse state in the country is key to the continued study of current, relevant social issues and policy problems. We are looking for people who are dynamic and driven, representing diverse perspectives, backgrounds, and life experiences, particularly those who wish to develop the tools and skills necessary to change our world for the better.

The Admission Cycle

GSPP begins accepting applications in September for the following Fall term. There are no rolling admissions. There are no spring admissions.

Admission decisions are based on an evaluation of the Statement of Purpose essay, three letters of recommendation, academic record and test scores, and the history of employment and experience. Excellence in any one area does not ensure admission. The admissions review process is based upon a comparison of qualifications among all those who apply – including (but not limited to) academic performance - in order to assemble a class diverse in student background, experience and interests. Interviews are not part of the review process.

As you might expect, the admissions office is inundated with e-mail and phone calls throughout the admissions cycle. Please send inquiries about your application to mppadm@berkeley.edu.

Degree Programs

MASTER OF PUBLIC POLICY



U.C. Berkeley



"GSPP provided invaluable hands-on experience that prepared me to work directly with public agencies, stakeholder organizations, and elected officials to develop policy solutions that are both innovative and practical. Through the IPA, APA and internship programs, I had the opportunity to apply the GSPP curriculum directly to real-world affordable housing and economic development challenges. These experiences prepared me to hit the ground running to make lasting change as a public official!"

Margaret Salazar M.P.P. '06
Executive Director
State of Oregon Housing
and Community Services
Department
Salem, OR

Key Elements for Admission

A Commitment to Public Policy

GSPP's goal is to admit those applicants who can get the most from the GSPP master's program and who will use what they learn to be active participants in the formulation, adoption and implementation of better public policy. One of the applicant's goals should be to convince the admissions committee of this commitment. This commitment should be discussed in the Policy Statement of Purpose.

Education

Students at GSPP represent a wide range of academic backgrounds. However, The admission committee must determine an applicant's ability to successfully complete the quantitatively rigorous MPP core curriculum. GSPP does not require prior quantitative training; however prior coursework in introductory college level Statistics, Calculus, and Microeconomics, is strongly recommended.

Writing and Analytical Skills

How students approach problems and the ability to write clearly and coherently is instrumental in public policy analysis. The committee will place a considerable amount of weight to the applicant's Statement of Purpose and Personal History Statement.

Standardized Tests

For Fall 2023 Admission: GRE scores are not required due to COVID-19. *Applicants who choose not to submit GRE scores (for any reason) are required to submit a quantitative resume.* The purpose of the quantitative resume is to provide the admissions committee with additional information on your quantitative proficiency in the absence of official GRE scores. The LSAT and GMAT cannot be substituted for the GRE. All applicants from countries in which the official language is not English are required to take the Test of English as a Foreign Language (TOEFL) or the International English Language Testing System (IELTS).

Three Letters of Recommendation

Three letters of recommendation are required. The most helpful letters are from persons who have supervised the applicant's work in either an academic, employment or community service capacity, and who can evaluate the applicant's intellectual ability, creativity, initiative, leadership potential, and promise in the field of public policy analysis and management.

The Value of Work Experience

Although GSPP does not require work experience for admission, it is strongly recommended and encouraged. Typically, each entering student has had at least three to four years of relevant full time work experience. GSPP believes work experience adds tremendous value to class discussions and helps students to develop a context for problem solving and policy analysis.

Math Review and Orientation

Two weeks before fall classes begin, first-year students are invited to participate in a series of information sessions and community building events designed to help them become acquainted with the School, the faculty, staff, and one another. Activities include public policy discussions with faculty, panel discussions with second-year students, a GSPP community barbecue, and small gatherings in homes of local alumni. Attendance at both orientation and GSPP's two-week math preparation course is optional but very popular with students.



Profile of the Fall 2022 Entering MPP Class

Number of applicants 625

Size of entering class ≈ 85

Percent Male ≈ 29%

Percent Female ≈ 64%

Genderqueer/Gender Non-Conforming/Trans ≈ 7%

Minority Students* ≈ 60%

Historically Underrepresented Students* ≈ 25%

California residents ≈ 51%

Out-of-state ≈ 19%

Undocumented Students ≈ 1%

International students ≈ 29%

Average estimated years of full-time work experience: 4.5

Average age: 28 (range: 23-47)

Average Advanced GPA: 3.79

Average GRE Test Scores:

GRE not required for Fall 2022 application (due to COVID-19)

For international students:

Average TOEFL (internet-based test [IBT]): 108 (range: 100-118)

* Represents percentage of U.S. Citizens

Application Checklist

On-line applications and required materials must be submitted by 8:59 p.m., P.S.T. December 1, 2022.

THIS IS A HARD DEADLINE. LATE APPLICATIONS WILL NOT BE ACCEPTED.

MPP and MPP/Concurrent Degree Applicants:

Please visit <https://gspp.berkeley.edu/programs/masters-of-public-policy-mpp> for detailed application instructions. Please review all instructions before beginning the online application.

Concurrent degree applicants should review the application instructions from both departments and plan accordingly.

The following documents are required for admission to the MPP program.

- Online Graduate Application for Admission and Fellowships: <https://grad.berkeley.edu/admissions/apply/>. Due December 1, 2022.
- Resume
- Policy Statement of Purpose
- Personal History Statement
- College Transcripts
- Three Letters of Recommendation
- GRE Scores or Quantitative Resume
- TOEFL Scores (for applicants from countries in which the official language is not English)
- Application Fee
\$135 application fee for U.S. Citizens and Permanent Residents (\$155 for all other applicants).
- Application Fee Waiver
Information can be found at <http://grad.berkeley.edu/admissions/apply/fee-waiver/>. To be eligible for an application fee waiver, you must be a U.S. citizen or current permanent resident. AB540 student smay now apply for the fee waiver.

Reapplicants:

If you applied to the university within the last two years, you may re-use attachments from your original application upon request, such as letters of recommendation and transcripts. Updated test scores or replacement letters of recommendation should be submitted with your new online application. Please contact the MPP Admissions Office of mpadm@berkeley.edu for assistance with the reapplication process.

Degree Programs

MASTER OF PUBLIC POLICY



U.C. Berkeley



"In 20 years of consulting to public executives at the federal, state, and local levels, I have yet to meet a problem for which the training at GSPP did not prepare me. I acquired the ability to distinguish between the best solution and the best possible solution to public policy and management issues."

Aaron Estis M.P.P. '85

President
The ESTIS Group
Atlanta, GA

Financial Aid & Fellowships

Financial assistance to help meet school educational expenses is available from the School on a competitive basis to those who apply. You will be notified about any departmental fellowship funding the School is able to provide in your admission letter.

Deadline December 1, 2022 is the deadline for all applications, including fellowship consideration.

All applicants who are U.S. citizens or U.S. permanent residents applying for any type of financial assistance must complete a Free Application for Federal Student Aid (FAFSA). The FAFSA is used to determine eligibility for Federal Direct Subsidized and Unsubsidized Loans. Applicants may apply online at: <https://studentaid.gov/>. The FAFSA is available in December or January, and students should plan to file the FAFSA by March 1, 2023 for priority processing. U.C. Berkeley's institution code for the FAFSA is 001312.

We encourage Undocumented/Dreamer Students to submit a CA Dream Act Application. The CA Dream Act Application allows students interested in attending eligible California colleges, universities and career education programs to apply for state financial aid. For more details, please visit: <https://www.csac.ca.gov/undocumented-dreamer-students>.

Additional Forms of Financial Support for UC Berkeley Students:

- Employment as a Graduate Student Instructor, Reader or Tutor at GSPP and other academic departments across campus.
- Employment as a Graduate Student Researcher in ongoing faculty research.
- Savings from the salary earned from the required full-time summer policy internship.
- Salary from student's Advanced Policy Analysis (client based master's thesis project).

More information about financial aid opportunities, housing, and estimated living costs for Berkeley graduate students may be found at <http://www.grad.berkeley.edu/>.

GSPP Departmental Fellowships

These fellowships are awarded on a merit basis and awards may vary. We offer a variety of fellowship packages that may include tuition and fees, stipends, or a combination of both for one or two years.

Graduate Opportunity Program (GOP)

Master's Fellowship Award

These awards provide financial assistance for entering students whose backgrounds, interests, or goals serve to enhance the level of diversity within the graduate community. GOP awards are based on financial need, academic promise, diversity contribution and are available to US citizens, permanent residents, and AB540 applicants who are entering a terminal master's or professional degree program. The awards consist of a \$10,000 stipend (\$5,000 per semester) and in-state fees for one academic year. For more information please refer to the Graduate Application for Admission and Fellowships or contact the University of California, Berkeley, Graduate Fellowships Office, Graduate Division, 318 Sproul Hall #5900, Berkeley, CA 94720-5900, 510-642-0672.

Student Fees and Tuition*

(Based on 2022-2023 Academic Year)
All fees are subject to change

California Residents:

Student Services Fee	\$1,152.00
Tuition	\$11,700.00
Berkeley Campus Fee	\$1,434.00
Class Pass Fee - Transit	\$190.00
Health Insurance	\$6,372.00
Document Management Fee	\$204.00
Professional Degree Fee	\$11,850.00
Total / Academic Cost:	\$32,902.00

Non-Residents:

Student Services Fee	\$1,152.00
Tuition	\$11,700.00
Berkeley Campus Fee	\$1,434.00
Class Pass Fee - Transit	\$190.00
Health Insurance	\$6,372.00
Nonresident Tuition	\$12,245.00
Document Management Fee	\$204.00
Professional Degree Fee	\$12,804.00
Total / Academic Cost:	\$46,101.00

Estimated Cost of Living:

Housing and Utilities	\$17,838.00
Food	\$8,578.00
Books and Supplies	\$672.00
Personal	\$2,908.00
Transportation	\$3,376.00
Total / Estimated Cost of Living:	\$33,372.00

*For the most recent information regarding fees and/or tuition, please visit: <https://registrar.berkeley.edu/tuition-fees-residency/tuition-fees/fee-schedule/>. Estimated cost of attendance information is available at <https://financialaid.berkeley.edu/how-aid-works/student-budgets-cost-of-attendance/>. (Graduate Student Budgets 2022-23 - Professional Programs).

The U.C. Public Policy and International Affairs (UCPPIA) Program

Eligible students who successfully complete a PPIA Junior Year Summer Institute are encouraged to apply to GSPP for their graduate studies. Fellowships include a minimum of \$10,000 toward graduate school tuition. Funding awards can vary each year. There is no separate application. However, students should indicate their PPIA fellow status on the M.P.P. Supplemental Application.

The Jacob K. and Marian B. Javits Political Leadership Scholarship

These scholarships are available for new MPP students who express clear political and public service aspirations.

The Charles B. Rangel International Affairs Fellowship Program

In support of the Charles B. Rangel Fellowship Program (which is a partnership with Howard University and the U.S. State Department), GSPP provides financial assistance to up to two (2) Rangel Fellows who are admitted to the M.P.P. Program and who indicate by the stated deadline their intention to accept our offer of admission. At the conclusion of two years of study, the Rangel Fellow is expected to have obtained a degree in international affairs or another area of relevance to the work of the Foreign Service (such as public administration, public policy, business administration, foreign languages, economics, political science, or communications) at a graduate or professional school approved by the Rangel Program.

Congressional Black Caucus Foundation (CBCF) Fellowship

GSPP is committed to supporting CBCF's mission to develop future leaders in public service by offering scholarships to alumni of the CBCF Leadership Institute of Public Service. GSPP will offer a minimum of \$5,000 scholarship to CBCF fellows, interns, and alumni who are admitted to the Master of Public Policy Program. These fellowships are awarded based on merit and commitment to public service.

Goddard Family Graduate Fellowship

The Goddard Family Graduate Fellowship supports high-achieving graduate students at the Goldman School of Public Policy. This Fellowship is open to all candidates regardless of race, gender, creed or national origin. A preference will be given to students who are interested in furthering the work of the Center on Civility and Democratic Engagement or who otherwise exemplify a commitment toward the fostering of meaningful civic engagement.

Funding for Summer Internships

While the majority of summer internship opportunities are paid, some students accept unpaid internships. In these cases, M.P.P. students can apply for funding from the School through the Unpaid Summer Internship Fund, a need-based program open to M.P.P. first-year students fulfilling the internship requirement who are unable to secure a paid position for the summer.

Establishing Residency

If you are a non-resident of California, you can establish California residency by the second year of the program, if you follow the appropriate guidelines, thereby saving approximately \$12,500 (per semester) in out-of state fees for your second year. (Must be a U.S. citizen). To be classified as a resident, a student must have 1) relinquished his/her prior residence and 2) been physically present and established residence in California for more than one (1) year immediately preceding the residence determination date.

Guidelines are subject to change. For current official residency guidelines please contact the Office of the Registrar, Residence Affairs Unit, (510) 664-9181; or consult the Office of the Registrar's website at: <http://registrar.berkeley.edu>.

We believe that a diverse class greatly enriches the School program. No specific undergraduate major is preferred for admission, and the class typically represents a wide range of academic backgrounds.



Degree Programs

MASTER OF DEVELOPMENT PRACTICE (MDP)



UC Berkeley's Master of Development Practice is

a two-year program that prepares practitioners to forge new and more effective paths toward sustainable development. The program integrates theory with hands-on, experiential learning. It is multidisciplinary, combining approaches based in economics, policy, health, climate and energy, and data science with experiential learning and direct work with development organizations and institutes.

The Berkeley MDP is part of a broader global alliance, and students in the program become part of the Global MDP network of universities and their partner organizations around the globe.

Program Requirements:

Pre-semester orientation: Prior to the beginning of classes, students attend a mandatory “DevCamp,” which includes rigorous quantitative reviews and qualitative discussions. Its purpose is to:

- Provide a common grounding in the quantitative side of the MDP program.
- Ground students in a common language about development.

- Enable students to get to know each other, the campus, and Bay Area life. This is accomplished by social events, field trips, and education about the broad range of Berkeley research centers and resources that will support their journey. Students will meet other members of the MDP community, including faculty and second-year students.

Core Multidisciplinary Seminars: These seminars, which are held each semester of the program, provide a weekly opportunity for Master of Development Practice students to work together as a cohort to explore issues in development. It includes engagement with guest speakers: academics and practitioners from around the world. The course also emphasizes the development of leadership, professional, and career search skills.



U.C. Berkeley



Core classes, in addition to the seminar, include: Economics of Sustainable Resource Development; International Economic Development Policy; Quantitative Methods and Impact Evaluation; Strategic Planning and Project Management; Leadership and Conflict Management; and Law, Politics, and Policymaking.

Science requirement: Fulfilled by a combination of Climate, Energy, and Development; Foundations of Public Health; and Principles of Natural Resource Management.

Innovation, Entrepreneurship, and Product Development requirement: Fulfilled by a broad set of courses across campus on topics

such as social entrepreneurship, responsible business, food, gender, finance, and marketing.

Experiential learning requirement: In conjunction with development organizations and institutes, students engage in a summer Practicum and a final project, which is overseen by a faculty advisor.

Electives

During their second year, students tap the abundant academic opportunities on the UC Berkeley campus to round out their program and customize it to their interests.

“Most successful development policies and programs have one thing in common: they are all data-driven and participatory. I chose Berkeley MDP because it prepares aspiring leaders to unleash the real power of data and give an inclusive lens in solving the pressing socio-economic issues. Furthermore, the Berkeley MDP classroom is well known for attracting top talent across the world, fostering multiculturalism and diversity in the classroom.”

Lidiya Kassahun
MDP Candidate '23
Ethiopia

Degree Programs

MASTER OF DEVELOPMENT PRACTICE (MDP)



U.C. Berkeley



"I chose the Master of Development Practice program at Cal because it offers a holistic approach towards development. It is a STEM-designated degree that develops the necessary leadership skills and analytics that are key to overcoming the wicked problems we, as a global society, face today."

Gabriel Pentead
MDP Candidate '23
Brazil



Admissions Requirements Application Checklist

NOTE: The application deadline for Fall 2023 admissions cycle is December 1, 2022.

To apply for admission, you need the following:

1. Online application submission and \$135 fee for domestic applicants/\$155 fee for international applicants.
2. Transcripts of all undergraduate/graduate institutions. Unofficial transcripts can be used for the application review process however official copies will need to be sent if you are admitted. UC Berkeley requires:
 - Bachelor's degree or recognized equivalent from an accredited institution.
 - You have a minimum grade-point average of a 3.0 (B) on a 4.0 scale.
 - International applicants: transcripts and degree certificates must be submitted in the language of instruction and English (with the exception of those in Spanish). If your

institution does not issue your documents in English, translations must be prepared by an [American Translators Association](#) certified translator.

3. Official GRE Revised General Test scores (Berkeley's institution code is 4833)
 - ** Due to COVID-19, the GRE is optional during admissions for the Fall 2023 start. If you are able to safely and conveniently take the exam, it is encouraged.**
4. Official TOEFL or IELTS scores if you are an applicant from a country where English is not an official language
 - This requirement applies to applicants from Bangladesh, Nepal, India, Pakistan, Latin America, the Middle East, Israel, the People's Republic of China, Taiwan, Japan, Korea, Southeast Asia, most European countries, and non-English-speaking countries in Africa.
 - The test must have been completed within the last year and the score must be 90 or higher for the Internet-based test (IBT) and 570 or higher for the paper-based format (PBT).
5. Resume/CV

6. Three Letters of Recommendation
7. Quantitative Resume detailing coursework and experience in Mathematics, Statistics, Economics, quantitative/qualitative methods, etc.
 - At least one academic reference is required for all applicants, two is preferred for applicants within 4 years of completing their undergraduate degrees.
7. Two Admissions Essays: Statement of Purpose & Personal History Statement ([Tips for essay writing](#))

More information about each element can be found at the general UC Berkeley graduate requirements site: <http://grad.berkeley.edu/admissions/requirements/>

Fellowships

To help offset educational and travel expenses associated with the program, the Master of Development Practice program has limited funds to provide fellowships to students on an individual basis. Funding levels are negotiated on an individual basis and can vary from year to year.

Teaching and Research Appointments

In addition, a modest number of Academic Student Employee appointments in the form of Graduate Student Instructor (GSI) and Graduate Student Researcher (GSR) positions are available for MDP students in various departments and centers across campus. These Academic Student Employee appointments include fee remissions (in many cases) and a monthly salary.

Research opportunities can be found in a number of different Centers and Institutes across campus, including (but not limited to) the Human Rights Center, Energy and Resources Group, Blum Center for Developing Economies, Center for Effective Global Action, and more.

Career Opportunities

Alumni of the Berkeley MDP can be found in the nonprofit, private, and public sectors in a wide

variety of positions, including Foreign Services Officer, Research Fellow, Software Development Engineer, Impact Investment Analyst, Project Developer, Diplomat, Climate and Energy Policy Manager, Utility Regulatory Analyst, and Program Manager.

Our alumni are peppered across the globe and are currently engaged with a diversity of employers such as Mercy Corps, jobs4refugees, USAID, USDA, UNHCR, Chevron, Climate-Works Foundation, Peace Corps, Gap, Inc., Walmart Chile, Abt Associates, McKinsey & Company, Patagonia, RTI International, and a number of social enterprises.

Master of Development Practice (MDP) Student Fees and Tuition

2022-2023 Academic Year*
*All fees are subject to change

California Residents:

Student Services Fee	\$1,152.00
Tuition	\$11,700.00
Berkeley Campus Fee	\$1,434.00
Class Pass Fee - Transit	\$190.00
Document Management Fee	\$204.00
Professional Degree Supplemental Tuition	\$21,772.00
Health Insurance	\$6,372.00

Total Cost - Academics: \$42,824.00

Non-Residents:

Student Services Fee	\$1,152.00
Tuition	\$11,700.00
Berkeley Campus Fee	\$1,434.00
Class Pass Fee - Transit	\$190.00
Document Management Fee	\$204.00
Professional Degree Supplemental Tuition	\$21,772.00
Nonresident Supplemental Tuition	\$12,245.00
Health Insurance	\$6,372.00

Total Cost - Academics: \$55,069.00

Estimated Cost of Living:

Housing and Utilities	\$22,924.00
Food	\$9,560.00
Books and Supplies	\$1,000.00
Personal	\$3,656.00
Transportation	\$1,816.00

Estimated Cost of Living \$38,956.00

*For the most recent information regarding fees and/or tuition, please visit: <https://registrar.berkeley.edu/tuition-fees-residency/tuition-fees-fee-schedule/> Estimated cost of attendance information is available at <https://financialaid.berkeley.edu/how-aid-works/student-budgets-cost-of-attendance/> (Graduate Student Budgets 2020-21 – Professional Programs).

Degree Programs

MASTER OF PUBLIC AFFAIRS (MPA)



The Berkeley MPA program is a transformational, one-year academic degree designed for mid-career professionals in the public, private and non-profit sectors. Typical MPA students seek the degree to make pivotal transitions in their careers, and when they are poised to take on leadership and policy roles in their workplace and professional communities.

The MPA Program strongly values diversity. Cohorts reflect the cultural and ethnic diversity of the Bay Area and country, and more than one-third of graduates are international, making the classroom discussions rich with perspectives from around the globe. The focus of the degree is on policy analysis combined with organizational leadership, innovation, strategy and implementation to solve long-standing public problems across multiple sectors. The MPA core courses teach policy analysis, leadership, communications, economics principles, research methods and inferential statistics, strategy and innovation, and ethics — all designed specifically for policy makers and leaders. Students undertake individual and group assignments that emphasize both short turnaround analyses and in-depth studies of policy issues. Applying the skills learned throughout the program, each MPA student, with faculty guidance, conducts a Capstone Project. The student serves as a consul-

tant to an organization and, in this capacity, analyzes a significant policy, programmatic challenge and/or opportunity facing the organization, and proposes recommendations that may lead to significant changes in policy and organizational management practices. The collaborative structure of the MPA program facilitates a space for sharing expertise and worldviews that not only enriches the academic experience, but also forges deep and unforgettable bonds within the cohort.

Core Curriculum

With the exception of the Capstone, MPA students fulfill all of their core course requirements during the summer intensive program, choosing to either complete the summer program in a single summer or split it among two summers. The core courses emphasize practical applications of analytical skills and give students a comprehensive skill set to lead public and nonprofit entities.

Policy Frameworks: The course introduces students to classic methods for framing public policy problems, rousing public interest, and identifying policy goals and policy tradeoffs. The course materials are three highly influential books and one article that deal with the topics of motivation for human behavior, the competing goals of economic growth and social equity, the overuse of common resources and government's role in balancing the risks and benefits of scientific advances. The course also draws on the experiences and expertise of students enrolled in the course.

Economics for Public Policy Makers: The primary goal of the class is to be able to think like an economist. Students will learn analytical tools, apply those tools to conduct economic policy analysis in real-world policy situations; and examine the pros and cons of different policy alternatives in terms of the concepts and language of economics.

Research Methods: This course presents an introduction overview of quantitative and qualitative research methods and an introduction to the research process in public policy decision-making.

Policy Analysis Using the Eight-fold Path: In this course you will learn to apply a classic method of public policy analysis, the so-called Eightfold Path for Policy Analysis. The method was developed by Professor Gene Bardach of GSPP and refined through multiple editions of his book of the same title. Class sessions are devoted to discussion and applications of the approach, along with some supplementary materials on context (eg. on complexity and so-called wicked problems) approaches to problem solving (e.g., design thinking) and tools (e.g. logic models).

Inferential Statistics: The Inferential Statistics course covers the use of data, and the basics of probability theory, statistical sampling, hypothesis testing, and inferring causality, with applications to public decision making.

Innovation, Strategy, and Leadership: The objective of this course is to assess the strengths and weaknesses of ethical arguments in the process and substance of policymaking. Those who seek to govern well inescapably confront questions of value in their political, professional and personal choices. The discussion of ethical dilemmas is

MPA Capstone Project Titles

Drawn from projects completed during recent years, this list illustrates the range and variety of projects.

How to Solve the Traffic Jams on National Freeway No. 5 in Taiwan

Cryptocurrency Regulations in the Republic of Korea

Residential Segregation in Denver, CO: A report on racial equity, housing supply & demand, and local land use control.

Ending Human Rights in Global Supply Chains - A Roadmap to Building Human Rights Due Diligence Legislation for the United States

How We Belong: A Path to Prioritization Oakland's Cultural Development

Breaking the Mold: Toward a New Gender & Poverty Narrative in the Global South

Implementing Capitation in Singapore

The Internet the World Actually Needs: A Policy Guide for Impact Investing in Meaningful Connectivity

Strategic Sustainment Planning: UASI Communication Projects

Addressing Vertical Fiscal Imbalance in Kazakhstan

Marked By COVID: Community Needs Assessment

Reimagining the City of Oakland's Special Events Permitting and Entertainment

Disconnected: Understanding Communication System Failures During Disasters

A Path to Actionable Climate Science: Bridging the gap between science and decision-making in the water sector

Mapping Food Security in America - An Analysis Through WPE's Food Pantry Programme

Addressing the Impacts of Fuelwood Consumption in Mexico

Assisting USAID with PMF Retention and Recruitment

Defense of Learning: A Community of Practice Model to Advance Equity, Access, and Social Justice in SCUSD

Responsible and Sustainable Supply Chain: Building a Better Future

The Juvenile Justice System: Addressing the Over-Representation of Youths with Disabilities Incarcerated

Micromobility in the Time of COVID-19

Enhancing Capabilities of the Bay Area Airport System for Future Air Transport Growth: A Regional Approach

Indian Railway restructuring: Lessons from world railways

Strategic Mitigation Plan | Displacement of Unhoused Populations at People's Park

Narrowing the Racial Wealth Gap through Postal Banking

Degree Programs

MASTER OF PUBLIC AFFAIRS (MPA)



U.C. Berkeley



"After 15 years of experience in the non-profit sector, I needed a career boost that I knew couldn't be found in an office space. The Goldman School's MPA program attracts a diverse set of people, which was the perfect learning environment for me. My time at Goldman was instrumental in building my confidence as a leader and preparing me for launching my own non-profit. Marked by COVID, less than two months after graduation."

Kristin Urquiza
M.P.A. '20 (Alumni)
Co-Founder and
Co-Executive Director
Marked by COVID

designed to provoke analytic reflection on the moral challenges and responsibilities for public policymaking in a democracy. The focus is on the many and often competing obligations, commitments and values that should guide public actors, as well as on the public principles that guide the design of good public policy.

Application and Admission

The Berkeley MPA Program seeks candidates with leadership experience and potential who will add to the richness of the classroom experience and engage in the wider Goldman School community. Successful candidates will show a high level of intellectual and academic performance. Students bring, on average, 10 years of work experience from the public, non-profit, or private sectors, and have demonstrated potential for a career in senior management, or other leadership roles. The Admissions process for the MPA degree is completely separate from the MPP degree program with a different application review committee, set of admissions criteria, and timetable. The MPA Program Fee is charged on a per-semester basis, differs from the MPP tuition and fees, and does not have an in-state tuition option.

For more information, visit gspp.berkeley.edu/mpa.

Students are admitted to the GSPP Master of Public Affairs (MPA) for the summer term only with classes beginning in late May.

Please visit <https://gspp.berkeley.edu/programs/masters-of-public-affairs-mpa/applying-for-the-mpa> for application deadlines and detailed application instructions for the MPA program.

Before beginning your online application, please review the checklist and instructions listed on this page.

Online Graduate Application for Master of Public Affairs: <http://grad.berkeley.edu/admissions/apply/>

You will find the MPA application listed with the programs with summer starts.

The following documents listed below are required for admission to the MPA Program and must be submitted with the online application:

- Statement of Purpose**
- Personal History Statement**

- Curriculum Vitae (C.V.) (or Resume)**
- Unofficial Transcripts**
- A minimum of two Letters of Recommendation**
- Official TOEFL or IELTS scores (for International Applicants)**
All students who receive their undergraduate degree from a university in a country where English is not the official language must comply with Graduate Admissions' Evidence of English Language Proficiency.
- Application Fee (submit with online application)**
To be eligible for an application fee waiver, you must be a U.S. citizen or current permanent resident (AB540 students may now apply for the fee waiver, please contact the Graduate Admissions Office at gradadm@berkeley.edu for instructions).

Financial Aid and Student Fees/Tuition

GSPP Departmental Fellowships:

These limited fellowships are awarded on a needs basis and awards will vary, but typically range between \$2,500 - \$7,500. Both international and domestic admitted applicants are considered for these fellowships as part of the application process. No additional paperwork or filing is needed. Fellowships are awarded prior to an admitted applicant enrolling in the program.

U.S. Military GI Bill:

Eligible students may receive benefits from the U.S. Department of Veterans Affairs (GI Bill program) and the California Department of Veterans Affairs College Fee Waiver (Cal Vet program). These benefits are facilitated by UC Berkeley's Veterans Benefits unit in the Office of the Registrar.

Career Opportunities

Our office includes a team of career professionals dedicated to providing support and services designed for mid-career professionals, including career and leadership coaching. The professional success of our students is important to us. To ensure this we provide students with individual career coaching tailored to their unique needs and connect them to career-related programming resources at the Goldman School and UC Berkeley campus. Students also gain exclusive access to our alumni events and extensive network of employers.



Profile of the Fall 2022 Entering Class

Total Applications	178
Total Matriculating Students*	≈ 42
Percent Male	≈ 40%
Percent Female	≈ 58%
Genderqueer/Gender Non-Conforming	≈ 1%
Did Not Identify	≈ 1%
Minority students*	≈ 38%
California residents	≈ 47%
Out-of-state	≈ 28%
International students	≈ 24%
Average estimated years of work experience:	≈ 13.2
Average age:	35.4

* This number does not include International students, only domestic minority students

Student Fees and Tuition*

(Based on 2022-2023 Academic Year)
All fees are subject to change

Estimated Student Fees:

Program Fee (Tuition)	\$63,037.00
University Fees	\$2,124.00
Class Pass Fee - Transit	\$250.00
Health Insurance (optional)	\$8,141.00

Total / Academic Cost: \$73,552.00

Estimated Cost of Living:

Housing and Utilities	\$18,180.00
Food	\$8,236.00
Books and Supplies	\$672.00
Personal	\$2,908.00
Transportation	\$3,376.00

Total / Estimated Cost of Living: \$33,372.00

*For the most recent information regarding fees and/or tuition, please visit: <https://gspp.berkeley.edu/programs/masters-of-public-affairs-mpa/tuition-and-financial-assistance> Estimated cost of attendance information is available at <https://financialaid.berkeley.edu/how-aid-works/student-budgets-cost-of-attendance/> (Graduate Student Budgets 2022-23 – Professional Programs).

Designed for policy leaders in the public, private and non-profit sectors, the MPA curriculum focuses on economic analysis, performance management, strategic thinking, ethical leadership, and negotiations.

Degree Programs

Ph.D. IN PUBLIC POLICY



U.C. Berkeley



“At GSPP I was exposed to new teaching and research methods that have been essential in my career as a university professor. The main strengths of GSPP from my point of view are the high caliber of its faculty and students, the small and friendly environment that facilitates research development, and the flexibility of the Ph.D. program.”

Arturo Vargas-Bustamante
M.P.P. '04, Ph.D. '08

Professor of Health Policy and Management
University of California,
Los Angeles, Fielding
School of Public Health
Los Angeles, CA



GSPP offers a doctoral degree program for students who seek careers in policy research in academia and/or with governments, non-profits, or research institutes. Usually only two or three Ph.D. applicants are admitted each year.

The Ph.D. program emphasizes the generation of knowledge, theories, methodologies, and applications appropriate to the advancement of public policy analysis and policy-relevant research. Doctoral students pursue highly individualized programs of study and typically work closely with Goldman faculty members who share the student's subject matter interest. The doctoral program provides enormous flexibility in the topics addressed and the program of study, but is designed mainly to train social science researchers with an interest in applied policy issues.

A thorough preparation in or aptitude for rigorous policy research is a prerequisite for the doctorate. Because there is no core program of study, the PhD committee prefers applicants who can show clear evidence of sustained interest in (and aptitude for) public policy and applied research.

Ph.D. Application Checklist

On-line applications and required materials must be submitted by 8:59 p.m., P.S.T. on December 1, 2022.

Students are admitted to the GSPP Ph.D. Program for the fall term only, and on a full time basis.

Ph.D. Application Instructions:

Visit <https://gspp.berkeley.edu/programs/doctoral-program-phd/applying-for-the-phd> for detailed application instructions. Please review all instructions before beginning the on-line application.

The following documents are required for admission to the Ph.D. program:

- Online Graduate Application for Admission and Fellowships:**
<http://grad.berkeley.edu/admissions/apply/>

- Statement of Purpose** (follow Statement of Purpose instructions at <https://gspp.berkeley.edu/programs/doctoral-program-phd/applying-for-the-phd>)
- Personal History Statement**
- Faculty Advisor Preferences**
- Curriculum Vitae (C.V.)**
- Writing Sample**
- Unofficial Transcripts**
- Three Letters of Recommendation**
- Official GRE Scores**
(required for Fall 2023 admission)
- Official TOEFL Scores** (for applicants from countries in which the official language is not English)
- Application Fee:** \$135 application fee for U.S. Citizens and Permanent Residents of the U.S. (\$155 for all other applicants)
- Application Fee Waiver:** Information can be found at <http://grad.berkeley.edu/admissions/apply/fee-waiver/>. To be eligible for an application fee waiver, you must be a U.S. citizen or current permanent resident. AB540 student may now apply for the fee waiver.

Admission to the Ph.D. Program

Students admitted to the Goldman School Ph.D. program are required to work with their designated faculty advisor to develop and submit a curriculum memo to the Ph.D. Program Faculty Chair that outlines the courses the student will take during the first two years of study. This curriculum memo can be updated at the end of each semester of Ph.D. residency should the student and their advisor decide that additional courses should be taken or substituted.

Please contact the Ph.D. Admissions Office at gspp-phdadm@berkeley.edu regarding questions about the Ph.D. Program and application process.

For additional inquiries about the Ph.D. program contact Professor Hilary Hoynes, Ph.D. Program Faculty Chair, at hoynes@berkeley.edu

Financial Support Fellowships

GSPP typically admits only two or three applicants each year, and offers support to admitted PhD students through a combination of department fellowships, university multi-year fellowships, and teaching and research assistantships. While funding packages vary by student, incoming PhD students are generally awarded five years of funding support consisting of fees and non-resident tuition, student health insurance and a living stipend. For admitted Ph.D. students who secure funding from external sources outside of UC Berkeley, external funding also goes towards the five years of funding support.

All funding packages are contingent on students meeting minimum academic and residency requirements for the Goldman School and the University throughout the tenure of support. United States citizens and Permanent Residents are required to achieve California residency by the end of their first year in California to receive continued fee support.

Graduate Student Instructors

There are many opportunities for Ph.D. students to work as graduate student instructors at GSPP and other social science departments. These appointments provide a fee remission (in many cases) and a monthly salary.

Research Opportunities

There are many opportunities on campus for Ph.D. students to engage in research with faculty or research centers on the Berkeley campus. In many cases, these are paid research opportunities. Ph.D. students have secured research assistant positions in research centers including: the Global Policy Lab, and the California Policy Lab, the Possibility Lab, the Opportunity Lab, the Berkeley Institute of the Environment, the Energy and Resources Group, and the UC Berkeley Labor Center, to name a few. These appointments may also provide a fee remission (in many cases) and a monthly salary.



U.C. Berkeley



“GSPP exposed me to innovative teaching and research methods that I now draw on as a university professor. To me, GSPP is exceptional for its highly accomplished faculty and high-caliber students. The flexibility of the Ph.D. program provided me with rigorous training in methods and theory, while allowing me to pursue my interests across disciplines.”

Karin Martin
M.P.P. '06, Ph.D. '12
Assistant Professor
University of Washington
Evans School of Public Policy
and Governance
Seattle, WA

Concurrent Degree Programs

WITH OTHER U.C. BERKELEY SCHOOLS



Pictured above: Professor Eugene Bardach

GSPP offers ten multidisciplinary degrees with top-rated graduate programs in Public Health, Law, Engineering, Global Studies, Energy and Resources and Social Welfare.

The Master in Public Policy degree may be earned in combination with an advanced degree from the following Berkeley schools under a coordinated program.

Applicants to concurrent degree programs with Public Health, Social Welfare, ERG, and Engineering will apply through a joint application but will be evaluated separately by each departments' admissions committee. Berkeley Law and Global Studies require separate applications. If you are admitted to both programs, than you may pursue both degrees at the same time. Each program will apply the same admissions requirements as used for students not seeking the concurrent degree. It is possible to be admitted to one program and not the other.

In most cases applicants interested in concurrent degrees can:

- 1) Apply to the concurrent program from the outset, which requires their application to be reviewed by both programs; OR
- 2) Apply and matriculate to one program and then, while a first-semester graduate student apply to the other department to become a concurrent degree student.

Note: If you are applying to a concurrent program with a department offering a one-year MS degree, you must apply and be accepted to that concurrent degree program during the initial admissions cycle in order to save a year of study and complete the degree in two years.

As an alternative to concurrent degrees, some students opt to complete a graduate certificate to further specialize in a specific area of interest. Graduate certificates are a terrific opportunity for students to obtain interdisciplinary training and interact with faculty outside of their primary areas of study without committing to completing an additional degree. The majority of certificate programs appear on student transcripts and are open to students from all Berkeley graduate programs. The University currently offers eight graduate certificates: 1) Applied Data Science 2) Food Systems 3) Geographic Information Science and Technology 4) Global Urban Humanities 5) Instructional Design, Learning Technologies, and Education Research 6) New Media 7) Real Estate 8) Social Work with Latinos.

Public Policy and Public Health (MPP/MPH)

Students may pursue a concurrent degree program in Public Policy and Health Policy and Management, which requires approximately three years. The program combines the development of basic policy skills with an in-depth understanding of health policy in the public and private sectors. For information about the Health Policy Management concentration contact the School of Public Health at, hpm_mph@berkeley.edu

Program Highlights

- One year of coursework in GSPP. Courses in public policy include: Introduction to Policy Analysis, Microeconomics, Politics of Organizations, Quantitative Methods, and Law and Public Policy.
- One year of coursework in the Graduate School of Public Health (students must select Health Policy and Management as their area of study). Courses include: Introduction to Public Health, Epidemiology, Environmental Health, Health Policy and Administration, Public Health Biology, and a specific course in each concentration.
- Participation in the Fall Health and Public Policy Seminars.
- A six-month full-time internship in health policy.
- An advanced health policy analysis.

Career Opportunities

Both the School of Public Health and GSPP assist students in career planning and in securing summer, six-month and permanent positions. For the six-month residency, program staff work with each student individually to match learning objectives and career interests with an appropriate residency opportunity.

Numerous career opportunities are available to individuals with MPP/MPH. degrees from the University of California, Berkeley. Some graduates assume research and policy analysis positions in federal and state governmental agencies, including staff to members of Congress, the Agency for Health Research and Quality, the Congressional

Budget Office, the Health Care Financing Administration, the Centers for Disease Control and Prevention, and state health agencies. Some graduates are employed in research and consulting organizations, HMO's, health care corporations, health advocacy groups, private foundations, and health care associations. Career opportunities include both domestic and international organizations.

For detailed admissions requirements and application instructions please visit <https://gspp.berkeley.edu> and <https://publichealth.berkeley.edu/>.

Public Policy and Law (MPP/JD)

Students may pursue a concurrent degree in law and public policy, which requires four years for a total of eight (8) semesters. At the end of the program the student will have earned both an MPP and a JD degree. The program requires separate application and admission to the University of California, Berkeley School of Law and the Goldman School of Public Policy. Neither the Goldman School of Public Policy nor Berkeley Law require or even recommend any specific undergraduate major. Applicants with varied backgrounds and training enhance and enrich the educational experience of all students.

Guidelines for Concurrent Degree Students in Law and Public Policy

Students who are enrolled in UC Berkeley's MPP/JD concurrent degree program must select one (1) of two specific enrollment tracks. To review the MPP/JD enrollment track options, please visit our website: <https://gspp.berkeley.edu/programs/concurrent-degree-programs/public-policy-law>

MPP students applying in their second year and JD students applying in their second or third year will not be admitted to the concurrent degree program. To design your four year plan, consult with your graduate advisor at GSPP and the Dean of Students Office at the law school.

Career Opportunities

The majority of students graduating with an MPP/JD degree accept positions as attorneys or



U.C. Berkeley



"GSPP prepared me for situations I encounter everyday as CEO of the Associated Press. The core analytical curriculum is extremely helpful in running an organization of any size. Also, GSPP's approach encourages working on policy issues collaboratively in groups, devising options and making recommendations under tight timelines. I have found this approach useful throughout my career."

Gary Pruitt M.P.P. '81/J.D. '82
President and
Chief Executive Officer
Associated Press
New York, NY

Concurrent Degree Programs

WITH OTHER U.C. BERKELEY SCHOOLS



U.C. Berkeley



“GSPP prepared me for situations I now encounter when advising elected and appointed officials. Beyond the core analytical curriculum, GSPP’s approach encourages working policy issues in groups and creating policy options and recommendations under tight timelines. I have always found this approach useful in my work.”

Nani Coloretti M.P.P. '94

Senior Vice President for
Financial and Business
Strategy, and Treasurer
The Urban Institute
Washington, DC

associates in private or public interest law firms. Some graduates assume legal positions in federal agencies such as the Environmental Protection Agency or the Equal Employment Opportunity Commission. Others go on to secure higher positions in judiciary branches of local, state, and federal governments. A small percentage use both degrees to work in public sector agencies, as well as private and non-profit organizations.

For detailed admissions requirements and application instructions please visit <https://gspp.berkeley.edu> and <https://www.law.berkeley.edu/admissions/>

Public Policy and Engineering (MPP/MS)

Government and technology interact more, and with greater consequences, every year. Whether the issue area is environmental protection, intellectual property (copyright and the internet), health care, water supply, government agencies at all levels, non-profit organizations and private industry need people who understand technology on its own terms and also the ways in which government supports, controls or directs it.

The Goldman School offers concurrent degree programs with the College of Engineering: Civil and Environmental Engineering (CEE), Electrical Engineering and Computer Science (EECS), Mechanical Engineering (ME) and Nuclear Engineering (NE).

Because these programs are small and students are admitted to specific departments of the College of Engineering, each student’s program tends to be customized with the agreement of advisors in both programs. Note that the two to three MPP/MS students are a tiny fraction of students in the very large College of Engineering and the program may be unfamiliar to many of its staff and faculty.

For detailed admissions requirements and application instructions please visit: <https://gspp.berkeley.edu/programs/masters-of-public-policy-mpp/concurrent-degree-programs/public-policy-engineering>

Public Policy and Global Studies (MPP/MA)

The MPP/IAS degree option has changed. Students are now invited to apply to the one-year Master’s Program in Global Studies (formerly International and Area Studies). Although the application option has changed, the program duration is still three years to complete both degrees.

Students applying for the MA degree in Global Studies (GS) may submit an on-line application through the Graduate Division Admissions website (<https://grad.berkeley.edu/admissions/apply/>).

For details regarding the Global Studies program visit: <https://globalstudies.berkeley.edu/> or call (510) 642-4466.

Public Policy, Energy and Resources (MPP/MA or MPP/MS)

The Goldman School of Public Policy (GSPP) and the Energy and Resources Group (ERG) offers a superior and one-of-a kind MPP/MA or MPP/MS concurrent degree program that integrates the strengths of public policy analytical tools with the interdisciplinary knowledge and expertise in energy and resources. The intersection of ERG and Public Policy disciplines is the nexus for training the next generation of leaders who will solve the world’s most complex and challenging energy and environmental problems. The program stresses analytic, quantitative, methodological, theoretical, and practical approaches to problems in energy, environmental science, and policy. Students will be required to complete both degrees in 3 years by taking key core courses offered by both departments (GSPP and ERG) and meeting the academic requirements for both degrees. The course requirements provide for a substantive introduction to the disciplinary approaches that are employed in studying energy and resource issues and public policy analysis. The curriculum provides an opportunity — through a topical cluster and a Capstone Project set of requirements (the Advanced Policy Analysis Project) — to extend and deepen the areas of analysis, investigation and understanding so as to satisfy the intellectual interests of each student.

Program Highlights

The objective of this program is to permit students to obtain in six semesters both the MPP and MA or the MPP and M.S. in Energy and Resources degree, which would normally require eight semesters of coursework.

- One year of coursework at GSPP. Complete GSPP core course requirements and take additional ERG courses.
- A 10-week full-time summer internship.
- One year of coursework at ERG. Complete ERG core and cluster requirements and take additional GSPP courses.
- Final year, complete Capstone Project – the Advanced Policy Analysis Project and all other requirements needed to complete both degrees.

Career Opportunities

The program is intended to prepare students for superior and versatile career opportunities in the public, private, and nonprofit sectors, both nationally and internationally. Graduates will go on to become national and global leaders in domestic and international government agencies (at all levels — federal, state and local), private sector companies, non-profit groups, think tanks, research organizations, and community-based organizations.

If you have questions about the MPP/ERG admissions requirements, please contact GSPP at mppadm@berkeley.edu and ERG at erggrad@berkeley.edu or visit our website.



Concurrent Degree Programs

WITH OTHER U.C. BERKELEY SCHOOLS

Students can choose electives from the full array of courses offered by Berkeley's academic departments and professional schools and colleges, as well as courses taught by GSPP faculty.



Public Policy and Social Welfare (MPP/MSW)

The Goldman School of Public Policy (GSPP) and the School of Social Welfare offer a three-year concurrent MPP/MSW degree program that blends the substantive focus and professional social work training of the MSW with the rigorous methodological tools and policy breadth of the MPP, and leads to the Master of Social Welfare (MSW) and Master of Public Policy (MPP) degrees. This concurrent degree is designed to meet the pressing need for creative and skilled leaders in the human services field to tackle large and seemingly intractable social problems in the United States and elsewhere. Adequate solutions to the challenges posed by immigration, widening income inequality, rising rates of chronic illness and the aging of the population all require a combination of sophisticated social work, policy analysis and political leadership. This broad range of skills is addressed in the MPP/MSW concurrent degree.

The program stresses analytic, methodological, theoretical, and practical approaches to problems in social service provision and administration, and in public policy more broadly. The course requirements provide for a substantive introduction to the disciplinary approaches that are employed. Leaders in human service agencies recognize the complementarities between policy skills and social welfare skills. The field now takes as given that practice and policy should be “evidence-based,” that is, supported by valid data and appropriate statistical analyses used within a strong theoretical framework. Students seeking a career in social service research, policy or administration must be knowledgeable about the complexities of service delivery, a perspective supplied by the MSW Field Work and service-oriented coursework; skilled in “big picture” policy analysis based in the rigorous methodological training in economics, statistics, and policy research of the M.P.P.; and able to effectively advocate for their programs and their constituents in the legislature and the executive branches, skills addressed in both programs.



U.C. Berkeley



Program Highlights

The objective of this program is to permit students to obtain in six semesters (three years) both the MPP and the MSW degree. Pursued separately, these degrees would normally require eight semesters.

In brief, the requirements are to:

- Complete GSPP core course requirements, including a master’s thesis requirement (the Advanced Policy Analysis Project) that reflects each student’s professional and intellectual interests.
- Complete M.S.W. core course requirements.
- A Social Work Field placement that also meets the Public Policy internship requirement.

Career Opportunities

The program is intended to prepare students for superior and versatile career opportunities in the public, private, and nonprofit sectors, both nationally and internationally. Graduates will go on to become national and global leaders in domestic and international government agencies (at all levels—federal, state and local), private sector companies, non-profit groups, think tanks, research organizations, and community-based organizations.

If you have questions about the program curriculum and admission requirements, please contact GSPP at mppadm@berkeley.edu and the Berkeley Social Welfare Admissions Office at swadm@berkeley.edu.

“At GSPP I learned how to engage a variety of issues and ask pertinent questions. GSPP taught me to be analytical, to not be afraid of numbers, and to do things quickly. These skills have served me well.”

Carmen Chu M.P.P. ‘03
 Assessor-Recorder
 City and County
 of San Francisco
 San Francisco, CA

Centers and Programs



Pictured above: Summer 2022 PPIA Fellows

The Goldman School of Public Policy is committed to creating leaders who understand and analyze pressing global issues and create innovative solutions using the best information available.

Berkeley Institute for Young Americans (BIFYA)

The Berkeley Institute for Young Americans (BIFYA) was founded in 2015 to bring together scholars and practitioners at the Goldman School of Public Policy, at UC Berkeley, and around the country, to address issues of generational inequity in a fact-based and nonideological fashion. The central purpose of the Institute is to address a key question: How can we ensure that public spending invests fairly in future generations so that young people will have ample opportunities for successful and productive lives?

A growing body of research shows that the millennial and Gen Z generations may be worse off financially than their parents. Where previous generations saw improvements in economic mobility from one generation to the next, these younger generations have stalled – they have lower incomes and fewer assets than their parents did at the same age. Young people are facing complex new challenges that may have serious repercussions for their health and quality of life as well as their long-term well-being and success.

The Berkeley Institute for Young Americans works to better understand the numerous challenges young adults are facing, from - gaining access to and affording better education, to finding rewarding jobs, to holding government accountable, to ensuring economic security throughout a lifetime. The Institute’s mission is to lead a fact-based, non-partisan discussion about how best to invest in future generations. It also aims to develop researchdriven policy proposals to equip policymakers, advocates, and young leaders with the solutions needed to ensure the long-term security and success of the next generation.

For more information on BIFYA, please contact: <https://youngamericans.berkeley.edu>
To contact the Institute’s team directly, reach out to: youngamericans@berkeley.edu

Berkeley Opportunity Lab

The Opportunity Lab serves as the central research hub for UC Berkeley scholars conducting cutting-edge and data-driven research on inequality in the United States. The O-Lab's mission is to build new insights into the causes and consequences of poverty and inequality, and to provide policymakers with data-driven solutions promoting equity and opportunity for all.

For more information: <http://www.olab.berkeley.edu/>

Please direct inquiries to O-Lab Director Hilary Hoynes: <https://www.hilaryhoynes.com/>

California Policy Lab

The California Policy Lab pairs trusted experts from the University of California with policymakers to solve our most urgent social problems, including homelessness, poverty, crime, and education inequality.

For more information: <https://www.capolicylab.org/>

To reach the California Policy Lab directly at info@capolicylab.org

Center on Environmental Public Policy

The Environmental Center at the Goldman School of Public Policy convenes multidisciplinary teams to support reform of local, regional, state and national policies affecting environmental justice, renewable energy, clean transportation, air quality, climate protection and adaptation, and sustainable finance. Currently, the Center works to decarbonize the Port of Oakland operations and reduce exposure to diesel particulate matter in West Oakland neighborhoods. In partnership with the California Treasurer and financial industry leaders, the Center is the Secretariat for California Green Bond Market Development Committee, with a mission to embed climate risk assessment and disclosure into the process of issuing local and state infrastructure debt. In collaboration with Lawrence Berkeley Lab experts, the Center leads research to accelerate the transition to clean energy and transportation in the US, China and India. See, 2035report.com. In 2021, the Center authored [California 100](#) papers on the future of energy, environment, and water resources.

The Center hosts seminars, workshops, and conferences for scholars, practitioners and policy makers. Goldman School students have opportunities to participate in Center research projects.

For more information contact:

David Wooley, Executive Director & Lecturer

davidwooley@berkeley.edu, <https://gspp.berkeley.edu/faculty-and-impact/centers/cepp>

Centers and Programs

Center for Security in Politics

The Center for Security in Politics (CSP) supports research, curriculum, and convenings that bring students, academics, and leading political practitioners together to address critical global risks, to translate research and analysis into actionable solutions for policymakers, thought leaders and elected officials, and to train a diverse generation of security professionals for careers in public service.

The Center is led by Janet Napolitano, who has a unique background as a former federal and state prosecutor, Arizona governor, and the nation's longest-serving Secretary of Homeland Security. She also served as president of the University of California from 2013-2020.

Visit the center's website at <https://csp.berkeley.edu/>

Center on Civility and Democratic Engagement (CCDE)

Public policy involves constructive dialogue, responsible citizenship, and healthy democratic institutions. Sharp political division can aggravate the very social problems the School's students, alumni and faculty work to solve.

Founded by Cal-Berkeley's Class of 1968, the Center on Civility & Democratic Engagement (CCDE) helps prepare future leaders to engage people of diverse viewpoints and backgrounds in the development and resolution of public policy issues. Our work takes many forms: research, teaching, fellowships, internships, public events, policy-analysis projects, and other initiatives. CCDE helps advance the civil-society values upon which the success of public policy depends. It fosters collaboration with those on the Berkeley campus and beyond, striving to improve sociopolitical interactions and to promote deliberative, inclusive approaches toward problem-solving.

CCDE's Fellowships Program supports Advanced Policy Analysis (APA) and summer internship projects advancing the Center's mission. Project examples can be viewed in the Research section of CCDE's website.

For more information on CCDE, please contact:

Larry Rosenthal, Program Director

510-642-2062 | lar@berkeley.edu

Center for Studies in Higher Education (CSHE)

Established in 1956, the Center for Studies in Higher Education (CSHE) is the first research institute in the United States devoted to the study of higher education.

CSHE successfully develops future diverse leaders in higher education. In the program's twelfth year, the Executive Leadership Academy (ELA) has an alumni network of 474.

In 2022 alone, more than 15 ELA alumni have made significant advancements in their careers, including 2021 Alum Richard Yao, President of CSU Channel Islands. Additionally, the ELA held its first international program at Shiv Nadar University, Delhi NCR (India) in November 2021. In response to greater demand for executive education, Breakfast With George was created in 2020. Of the 32 scholars who have participated in this mentorship program for university leaders, three have become university presidents.

The David Gardner Seminar on Higher Education engages selected doctoral students throughout the University of California system to share their research in higher education across multiple disciplines. The seminar creates a unique community of early career higher education researchers within the state and provides opportunities for the Gardner Fellows to better understand current higher education policy issues.

Food Labor Research Center

The Food Labor Research Center was launched in fall 2012 by [Saru Jayaraman](#) as a project of the Labor Center and affiliated with the [Berkeley Food Institute](#) at the University of California, Berkeley. As a leader in the movement for food worker justice, Saru saw a gap in the study of the intersection of food and labor.

While there are several University centers that focus on labor studies, the Food Labor Research Center at the Goldman School of Public Policy is the first academic institution in the country to focus on the intersection between food and labor issues.

Global & Executive Education Programs at the Goldman School of Public Policy

The Goldman School is committed to developing ‘thought leaders for a just society’ capable of analyzing pressing global issues and creating innovative solutions using the cutting edge and latest knowledge available. Grounded in open engagement and the free exchange of ideas, Global & Executive Education at GSPP utilizes a three-pronged approach:

- Bring emerging leaders, policy makers, practitioners, students, and bureaucrats from foreign governments to learn from the applied research of GSPP faculty and staff.
- Create opportunities for these leaders and GSPP community to share best practices.
- Offer the participants access to the best and brightest practitioners on campus and in the Bay Area, particularly the Silicon Valley.

For the past fifteen+ years, the Goldman School has developed relationships with the governments, non profits, and Universities in Brunei, China, Hong Kong, India, Japan, Kazakhstan, New Zealand, Nigeria, and Taiwan. The School is always expanding its international reach and boasts of a growing alumni network spanning 4 continents and 30 nations.

For more information on Global & Executive Education at the Goldman School, please contact: sppglobal@berkeley.edu



U.C. Berkeley



“I remember one of my first assignments as a planner—analyzing my department’s reimbursement structure for providers of homeless shelters. I was examining the economic, legal, political, and policy implications. As I got deeper into the analysis, it became clear that the skills I’d learned at GSPP were invaluable. My first reaction was ‘My God! Could those GSPP professors have been right?’ I highly recommend the program.”

Tangerine Brigham M.P.P. '90
Chief Administrative Officer,
Population Health
Alameda Health System
Oakland, CA

Centers and Programs

Global Policy Lab

The Global Policy Laboratory (GPL) is an interdisciplinary research group that integrates physical science, social science, and data science to answer questions that are central to managing planetary resources—such as the economic value of the global climate, the effectiveness of treaties governing the oceans, how the UN can fight wildlife poaching, and whether satellites and AI can be combined to monitor the entire planet in real time. The GPL team’s research has been published in *Nature*, *Science*, and *PNAS*, their findings have been covered in thousands of news outlets, and the team regularly interacts with policy-makers at the federal and international levels. The lab is directed by Solomon Hsiang, Chancellor’s Professor of Public Policy and a Carnegie Fellow + National Geographic Explorer.

For more information: <https://www.globalpolicy.science/research>

Institute for Research on Labor Employment

The Institute for Research on Labor and Employment promotes better understanding of the conditions, policies, and institutions that affect the well-being of workers and their families and communities. We inform public debate with hard evidence about inequality, the economy, and the nature of work.

IRLE is home to several nationally-recognized centers and programs that conduct research, education, and outreach on labor and employment issues. The largest of our centers and principal outreach program is the Center for Labor Research and Education, also known as the Labor Center. IRLE also houses the Center on Wage and Employment Dynamics (CWED), Center for the Study of Child Care Employment (CSCCE), California Policy Lab (CPL), and California Public Employee Relations (CPER). Our centers provide in-depth research and policy analysis in areas such as minimum wage policies, the early childcare workforce, homelessness, and public sector labor and employment law.

To contact the IRLE team directly, reach out to <https://irle.berkeley.edu/>

Risk Resilience Research Lab

The Risk Resilience Research Lab aims to improve justice, safety and well-being for people and communities at risk, through policy-relevant research. They partner with government and non-profit stakeholders, including the people they serve, to develop evidence-based strategies that:

- advance violence prevention and well-being
- improve treatment services and supervision, and
- reduce inequality in the justice system.

To shed light on what works, their team uses a variety of disciplinary approaches and rigorous methods — from state-of-the-art analyses of ‘big data,’ to experiments in real-world settings. Their results often challenge common-sense assumptions about the cause of the problem and suggest innovative strategies for prevention, intervention, and justice.

For more information, visit risk-resilience.berkeley.edu.



The Possibility Lab

The Possibility Lab is launching a national movement to mobilize community-engaged, data-driven innovation for the public good. Through sustained partnerships between public sector changemakers and academic research teams, they are tackling big questions that cut across traditional research and policy boundaries. The Lab's work brings together public management scholars, behavioral economists, political scientists, and public policy experts who are committed to evidence-based policy making and who use rigorous quantitative, participatory, and experimental methods to better understand the impact of new ideas. In each case, projects are co-designed with community and government partners in order to ensure that innovations are feasible in the short term, scalable in the future, and make meaningful progress towards systemic change. You can find more information about the Possibility Lab at <https://possibilitylab.berkeley.edu/> or reach out to them directly at possibilitylab@berkeley.edu

University of California Public Policy and International Affairs (UCPPPIA) Junior Summer Institute

Each summer the Goldman School's UCPPPIA Junior Summer Institute prepares approximately 30 undergraduate students for graduate studies and professional careers in public policy, international affairs and law. The Summer Institute seeks future leaders who possess a commitment to public service, and in particular, to addressing policy issues most affecting historically under-served communities and people of color. Sponsored by the University of California Office of the President to enhance diversity and better meet the needs of the State, the Institute is especially designed for undergraduates seeking admission and study at a U.C. policy school. Student participants receive seven weeks of intensive, skills-based preparation in policy analysis, economics, quantitative methods and analytical writing/presentation skills, along with career development seminars and exposure to graduate studies.

The UCPPPIA Program partners with the U.C. Berkeley School of Law to select approximately 10 of the 30 PPIA Fellows as Law Fellows. In addition to learning the fundamentals of policy analysis, PPIA Law Fellows are exposed to the topics and skills necessary to gain entry to and succeed at a top law school. Participants who successfully complete the summer program are eligible to receive a minimum of \$10,000 scholarship toward graduate school tuition upon enrollment at a PPIA Consortium School. The Summer 2023 application deadline is November 1, 2022. Note: The 2023 UCPPPIA Program is contingent upon state funding.

For more information on UCPPPIA, please contact: ppiaprogram@berkeley.edu or visit <https://gspp.berkeley.edu/programs/undergraduate-programs/ppia-junior-summer-institute>

Faculty & Administration

U.C. Berkeley leads the world in conducting cutting-edge, multidisciplinary research - the type of work that holds the greatest promise for solving our most pressing global problems in areas ranging from health science and energy to the environment and transportation.



David C. Wilson
Dean and Professor of Public Policy

David C. Wilson, Ph.D. is Dean of the Richard and Rhoda Goldman School of Public Policy and Professor of Public Policy at the University of California, Berkeley. Professor Wilson is a political psychologist specializing in the use of survey-

based experiments to study political behavior and policy preferences. He is drawn to investigate justice-related biases in political preferences created by judgements of others.

He is the author of 2022 book, *Racial Resentment in the Political Mind* (University of Chicago Press), and his scholarship can be found in a variety of research outlets, including *Public Opinion Quarterly*, *Political Behavior*, *Du Bois Review*, *Psychological Sciences*, and the *Journal of Applied Psychology*.

Prior to UC Berkeley, Dean Wilson served as a Senior Associate Dean of the College of Arts & Sciences and Associate Dean of the Social Sciences, at the University of Delaware. He also served as a statistical researcher at the Gallup Polling Organization in Washington, DC. He earned a BA (government) from Western Kentucky University, and an MPA (policy analysis) and Ph.D. (political science), from Michigan State University.



Sarah Anzia
Associate Professor of Public Policy and Political Science

Sarah Anzia is a political scientist who studies American politics with a focus on state and local government, elections, interest groups, political parties, and public policy. She is the author of *Local Interests: Politics,*

Policy, and Interest Groups in US City Governments, which evaluates the political activity of interest groups in US local governments and how interest groups shape local public policies on housing, business tax incentives, policing, and public service provision more broadly. Her first book, *Timing and Turnout: How Off-Cycle Elections Favor Organized Groups*, examines how the timing of elections can be manipulated to affect both voter turnout and the composition of the electorate, which, in turn, affects election outcomes and public policy. She has also written about the political activity and influence of public-sector unions, the politics of public pensions, policy feedback, women in politics, political parties, and the historical development of electoral institutions. She has a Ph.D. in political science from Stanford University and an MPP from the Harris School at the University of Chicago.



Robert J. Birgeneau
Arnold and Barbara Silverman Distinguished Professor of Physics, Materials Science and Engineering, and Public Policy
Chancellor Emeritus

Professor Birgeneau received his Ph.D. in Physics from Yale University in 1966 with Professor Werner Wolf. He was on

the faculty of Yale for one year and then spent one year at Oxford University. He was at Bell Laboratories from 1968 to 1975 and then went to MIT in September 1975 as Professor of Physics. In 1988 he became head of the department and in 1991 became Dean of Science at MIT. In 2000, he became President of the University of Toronto. In 2004 he became U.C. Berkeley's Chancellor and joined the Physics faculty. He concluded his service as Chancellor at the end of May 2013 and is now the Arnold and Barbara Silverman Distinguished Professor of Physics, Materials Science and Engineering, and Public Policy. Professor Birgeneau is currently co-leading the American Academy's Lincoln Project on Public Higher Education in the United States. He also is acting as the university liaison for the Science Philanthropy Alliance, which seeks to increase dramatically philanthropic support for discovery-based fundamental research. He maintains a continuing involvement in ameliorating the lives of undocumented immigrants and in supporting formerly incarcerated students at Berkeley and beyond.



Henry E. Brady
Class of 1941 Monroe Deutsch Professor of Public Policy and Political Science

Henry Brady is a political scientist and economist studying democracy, public policy, political participation, voting, and public opinion in the United States, Canada, Russia, Estonia and other countries. He has written about and

advised policy-makers on voting systems, welfare policy, cyber-infrastructure, and higher education. Early in his career, he worked for the federal Office of Management and Budget, the National Science Foundation, the League of New Community Developers, and other organizations in Washington, DC. From 1999 to 2009 he directed the Survey Research Center at Berkeley.

In the late 1980s, Brady and his colleagues in Canada pioneered a new survey design for studying election campaigns that is now at the heart of the Annenberg National Election Study in the United States. In the early 1990s, Brady began periodically to visit and collect data in the Soviet Union and its successor states, and he continues to write on ethnicity and the collapse of the Soviet Union. In the mid-1990s, Brady led major evaluations of welfare reforms in California using field experiments, and he contributed to state welfare reform legislation. After the 2000 presidential election and the butterfly ballot confusion in Florida, Brady became an advocate for replacing punch card

ballots, and he worked successfully for their elimination in California and Illinois. In 2003, the U.S. Ninth Circuit Court of Appeals briefly halted the California gubernatorial recall vote, in part due to Brady's research on how punch card systems disproportionately lost votes in minority communities. Brady is frequently interviewed on elections, voting systems, and public opinion by newspaper, radio, and television reporters.

In 2003 Brady was elected a member of the American Academy of Arts and Sciences and in 2006 a fellow of the American Association for the Advancement of Science. He was president of the American Political Science Association from 2009 to 2010. He has served on the Board of the American National Election Studies, the National Science Foundation's Advisory Committee on Social, Behavioral, and Economic Sciences, and its Advisory Committee on Cyberinfrastructure. He is a past member of the American Academy's Lincoln Project on Public Higher Education in the United States.



Jennifer Bussell

*Associate Professor
of Political Science and Public Policy*

Jennifer Bussell is a political scientist with an interest in comparative politics and the political economy of development and governance, principally in South Asia and Africa. Her newest book, *Clients and Constituents: Political Responsiveness in Patronage Democracies* (Modern South Asia Series, Oxford University Press), considers the provision of constituency service by high-level elected officials in India and elsewhere, using elite and citizen surveys, interviews, qualitative shadowing, and experiments to explore the implications of citizen-state relations for public service delivery. Her first book *Corruption and Reform In India: Public Services in the Digital Age* (Cambridge University Press) examines the role of corrupt practices in shaping government adoption of information technology across sub-national India, as well as South Africa and Brazil. She also studies the politics of disaster preparedness policies in developing countries. Her work has been published or is forthcoming in *Political Analysis*, *Governance*, *Comparative Political Studies*, *International Studies Quarterly*, and *Economic and Political Weekly*. Prior to joining the Goldman School, she taught in the LBJ School of Public Affairs at the University of Texas, Austin. She received her Ph.D. in political science from the University of California, Berkeley.

Her newest book, Clients and Constituents: Political Responsiveness in Patronage Democracies (Modern South Asia Series, Oxford University Press), considers the provision of constituency service by high-level elected officials in India and elsewhere, using elite and citizen surveys, interviews, qualitative shadowing, and experiments to explore the implications of citizen-state relations for public service delivery. Her first book *Corruption and Reform In India: Public Services in the Digital Age* (Cambridge University Press) examines the role of corrupt practices in shaping government adoption of information technology across sub-national India, as well as South Africa and Brazil. She also studies the politics of disaster preparedness policies in developing countries. Her work has been published or is forthcoming in *Political Analysis*, *Governance*, *Comparative Political Studies*, *International Studies Quarterly*, and *Economic and Political Weekly*. Prior to joining the Goldman School, she taught in the LBJ School of Public Affairs at the University of Texas, Austin. She received her Ph.D. in political science from the University of California, Berkeley.



Avi Feller

*Associate Professor of
Public Policy and Statistics*

Avi Feller is an associate professor at the Goldman School and the Department of Statistics and works at the interface of public policy, data science, and statistics, with the goal of dev-

eloping and applying quantitative tools to improve policy. His methodological research focuses on causal inference in the social sciences, with an emphasis on developing practical, transparent methods that can be applied at scale. His policy research focuses on working with governments on using data to design, implement, and evaluate policies, including applications in education and criminal justice. Feller received a Ph.D. in Statistics from Harvard University, an M.Sc. in Applied Statistics as a Rhodes Scholar at the University of Oxford, and a B.A. in Political Science and Applied Mathematics from Yale University. Prior to his doctoral studies, Feller served as Special Assistant to the Director at the White House Office of Management and Budget.



Jack Glaser

Professor of Public Policy

Jack Glaser is a social psychologist whose primary research interest is in stereotyping, prejudice, and discrimination. He studies these intergroup biases at multiple levels of analysis, from subtle, implicit forms to hate crime. His primary research and policy

engagement focus is on identifying and mitigating the causes of racial and ethnic disparities in policing. Professor Glaser is working with the Center for Policing Equity as one of the principal investigators on a National Justice Database of police stops and use of force incidents. He advises the California Governor's Office on police use of force policy reform and the state's Department of Justice on the analysis and interpretation of police stop data collected under the Racial & Identity Profiling Act. Glaser is the author of *Suspect Race: Causes and Consequences of Racial Profiling*.



Hilary Hoynes

*Professor of Public Policy
and Economics*

*Haas Distinguished Chair in
Economic Disparities*

Hilary Hoynes is an economist who works on poverty, inequality, food and nutrition programs, and the impacts

of government tax and transfer programs on low income families. She is particularly interested in studying the social safety net in the United States and understanding how access to the social safety net in early life affect's children's later life health and human capital outcomes. In addition to her appointment at GSPP, she co-directs the Berkeley Opportunity Lab.

Professor Hoynes is a member of the American Academy of Art and Sciences, the National Academy of Social Insurance, and a Fellow of the Society of Labor Economists. She has served as Co-Editor of the *American Economic Review* and the *American Economic Journal: Economic Policy*. She served on the National Academy of Sciences Committee on Building

Faculty & Administration

Today's top minds inspire and equip GSP students with the necessary skills for critical thinking and innovative leadership.

an Agenda to Reduce the Number of Children in Poverty by Half in 10 Years, the State of California Task Force on Lifting Children and Families out of Poverty, and the Federal Commission on Evidence-Based Policy Making. In 2014, she received the Carolyn Shaw Bell Award from the Committee on the Status of the Economics Profession of the American Economic Association. Dr. Hoynes received her Ph.D. in Economics from Stanford University in 1992 and her undergraduate degree in Economics and Mathematics from Colby College in 1983.



Solomon Hsiang

*Thomas and Alison Schneider
Chairholder in Public Policy and
Professor of Public Policy*

Solomon Hsiang combines data with mathematical models to understand how society and the environment influence one another. In particular, he focuses on how policy can encourage economic development while managing the global climate. His research has been published in *Science*, *Nature*, and the *Proceedings of the National Academy of Sciences*.

Hsiang earned a B.S. in Earth, Atmospheric and Planetary Science and a B.S. in Urban Studies and Planning from the Massachusetts Institute of Technology, and he received a Ph.D. in Sustainable Development from Columbia University. He was a Post-Doctoral Fellow in Applied Econometrics at the National Bureau of Economic Research (NBER) and a Post-Doctoral Fellow in Science, Technology and Environmental Policy at Princeton University. Hsiang is currently an Associate Professor of Public Policy and Agricultural & Resource Economics at the University of California, Berkeley and a Faculty Research Fellow at the NBER.

In 2013, Hsiang became the inaugural recipient of the American Geophysical Union's Science for Solutions Award for "significant contributions in the application and use of Earth and space sciences to solve societal problems."

In 2014, Hsiang was named in *Forbes Magazine's* 30 Under 30 in Law and Policy. He was also the lead economist for the national analysis "American Climate Prospectus: The Economic Risks of Climate Change in the United States" commissioned by Michael Bloomberg, Hank Paulson, and Tom Steyer.



Cecilia Hyunjung Mo

*Associate Professor of Public Policy
and the Judith E. Gruber
Associate Professor of Political Science*

Cecilia Hyunjung Mo is an Associate Professor of Public Policy and the Judith E. Gruber Associate Professor of Political Science at University of California, Berkeley. She specializes in behavioral political economy, comparative political behavior, the political economy of development, and social policy re-

search. She focuses on significant contemporary challenges to development and moral issues of today like cultivating democratic citizenship, understanding and addressing the negative consequences of rising inequality, reducing prejudice, and combatting modern day slavery. She currently serves as the co-lead scientific advisor for IPA's Human Trafficking Research Initiative. Her research agenda is interdisciplinary and lies at the intersection of political science, economics, and psychology. She has published research in top outlets like the *American Journal of Political Science*, the *American Political Science Review*, the *Journal of Politics*, the *Journal of Theoretical Politics*, *Political Behavior*, the *Proceedings of the National Academy of Sciences*, and *World Development*.



Rucker C. Johnson

*Chancellor's Professor
of Public Policy*

Rucker C. Johnson is Chancellor's Professor of Public Policy at UC Berkeley, and faculty research associate at NBER. As a labor economist who specializes in the economics of education, Johnson's work considers the role of poverty and inequality in affecting life chances.

Johnson is the author of *Children of the Dream: Why School Integration Works*. He was inducted as the Sir Arthur Lewis Fellow of the American Academy of Political and Social Science, inducted as a member of the American Academy of Arts & Sciences, the National Academy of Education, and received the 2017 Andrew Carnegie Fellowship. His research has appeared in leading academic journals, featured in mainstream media outlets, and he has been invited to give policy briefings at the White House and on Capitol Hill.

Johnson is committed to advance his scholarly agenda of fusing insights from multiple disciplinary perspectives to improve our understanding of the causes, consequences, and remedies of inequality in this country. At the Goldman School (2004-present), he teaches graduate and undergraduate courses in applied econometrics and topical courses in race, poverty & inequality.



Daniel M. Kammen

*James and Katherine Lau
Distinguished Professor
of Sustainability*

Dan holds parallel appointments in the Energy and Resources Group (where he serves as Chair), the Goldman School of Public Policy (where he Directs the Center for Environmental Policy), and as a professor in the Department of Nuclear Engineering.

From 2005 – 2015 he directed the Transportation Sustainability Research Center at UC Berkeley.

Kammen is a Fellow of the American Physical Society, and the American Association for the Advancement of Science. In 2020

he was elected to the American Academy of Arts & Sciences. Since 1999 Kammen has been a Coordinating Lead Author for the Intergovernmental Panel on Climate Change (IPCC), which shared the 2007 Nobel Peace Prize.

His work is focused on energy access, energy and environmental justice, and decarbonization of national, regional, and local economies. He pursues this through applied mathematical power sector models, practical field programs (currently in central and East Africa, in SE Asia, and with partners in China, Kenya, Indonesia, and the UK.

Kammen is the author of over 400 journal publications, with major projects on energy for international development; job creation in the energy and environmental sectors, environmental justice, and the technology pathways to a low-carbon economy. Kammen was educated in physics with PhD (1988) and MS (1986) from Harvard



Dorothy Kronick

Assistant Professor of Public Policy

Dorothy Kronick is a political scientist focused on contemporary Latin American politics, especially Venezuelan politics. Her work on crime and policing in the Americas highlights unintended consequences of common policies such as seizing illegal drugs or rewriting criminal procedure codes. She also studies democratic backsliding and competitive authoritarianism. Kronick's work has been published or is forthcoming in the *American Political Science Review*, the *Journal of Politics*, *International Organization*, *Political Science Research and Methods*, the *Quarterly Journal of Political Science*, and the *Journal of Conflict Resolution*, among other outlets. Her commentary on Venezuelan politics has been published in the *New York Times* and the *Washington Post*. Kronick holds a Ph.D. in Political Science and an M.A. in Economics from Stanford University. Prior to joining the Goldman School, she taught at the University of Pennsylvania.



Adam Leive

Assistant Professor of Public Policy

Adam Leive is a health economist who uses large administrative datasets to study policy-relevant questions about health insurance and safety net programs. His research seeks to understand consumer behavior in complicated life-cycle decisions that impact economic security, such as health insurance and retirement saving. He has also recently studied the effects of employment incentives in safety net programs on labor market outcomes and program participation. His research has been published in the *American Economic Journal: Applied Economics* and the *American Economic Journal: Economic Policy* and has been funded by the National Institutes of Health and National Science Foundation. He earned his Ph.D. from the University of Pennsylvania's Wharton School

and his B.A. from Princeton University's School of Public and International Affairs. Prior to his doctoral studies, Leive worked at the World Bank and the IMF.

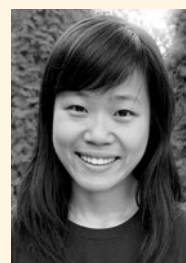


Amy Lerman

Michelle Schwartz Endowed Chair and Professor of Public Policy and Political Science

Director: The Possibility Lab

Amy E. Lerman is a political scientist whose research focuses on issues of race, public opinion and political behavior, especially as they relate to punishment and social inequality in America. She directs the Possibility Lab, where she conducts research projects in partnership with government agencies and other stakeholders to advance community-engaged, data-driven innovation for the public good. Lerman is the author of two books on the American criminal justice system—*The Modern Prison Paradox* (2013) and *Arresting Citizenship* (2014). Her most recent book, *Good Enough for Government Work* (2019), examines how negative stereotypes of government shape policy preferences and political behavior. In addition to her academic work, Lerman has served as a speechwriter and communications consultant for national nonprofits and members of the United States Congress, a community organizer in Latin America and Southeast Asia, and an adjunct faculty member of the Prison University Project at San Quentin State Prison. She consults widely on issues related to policing and prison reform, access to higher education, equity in health policy, and law enforcement mental health.



Shelley Liu

Assistant Professor of Public Policy

Shelley Liu is a political scientist whose research interests lie at the intersection of political violence and the political economy of development, with a regional focus on sub-Saharan Africa. Her ongoing projects combine qualitative and quantitative methods to examine questions central to policymaking within the areas of conflict and post-conflict governance, local public goods provision, and incentives for political participation in weak and fragile states. Her past work has been published at the *American Journal of Political Science* and *Politics & Society*. Prior to joining the Goldman School, Liu received a Ph.D. in Government from Harvard University and was a Randolph Jennings Peace Scholar at the United States Institute of Peace.

Faculty & Administration

Most faculty members hold full-time appointments at the school and all share a commitment to maintaining the quality of the overall program.



Claire Montialoux

Assistant Professor of Public Policy

Claire Montialoux is an assistant professor at the Goldman School and works at the intersection of public policy, economics and data science. Her research studies policies aimed at reducing inequalities in the labor market, with a particular focus on minimum wages and racial earnings gaps. Prior to her doctoral studies, Montialoux served as Deputy Head of Tax Policy Analysis at the French Treasury. Montialoux received a Ph.D. in Economics from ENSAE ParisTech-CREST-Polytechnique, a M.Sc. in applied Statistics at ENSAE ParisTech and in Economics at the Paris School of Economics, and a B.A. in Econometrics and Sociology from École Normale Supérieure (Paris-Saclay).



Janet Napolitano

Professor of Public Policy

Director: Center for Security in Politics

Janet Napolitano is a Professor of Public Policy and Director of the Center for Security in Politics at UC Berkeley. A distinguished public servant, Napolitano served as the president of the University of California from 2013 to 2020, as the U.S. Secretary of Homeland Security from 2009 to 2013, as Governor of Arizona from 2003 to 2009, as Attorney General of Arizona from 1998 to 2003, and as U.S. Attorney for the District of Arizona from 1993 to 1997. She earned her B.S. degree (summa cum laude in Political Science) in 1979 from Santa Clara University, where she was a Truman Scholar, and the university's first female valedictorian. She received her law degree in 1983 from the University of Virginia School of Law.

Napolitano is the recipient of nine honorary degrees as well as the Jefferson Medal from the University of Virginia, that University's highest honor. In 2015, Napolitano was elected to the American Academy of Arts and Sciences, and in 2017 she was elected to the American Philosophical Society. In March of 2019, Napolitano published *How Safe Are We: Homeland Security Since 9/11*. In 2022, President Biden appointed Napolitano to the President's Intelligence Advisory Board.

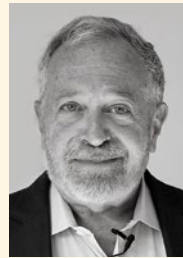


Steven Raphael

James D. Marver Chairholder and Professor of Public Policy

Faculty Director of the Institute for Research on Labor and Employment

His research focuses on the economics of low-wage labor markets, housing, and the economics of crime and corrections. His most recent research focuses on the social consequences of the large increases in U.S. incarceration rates, racial disparities in criminal justice outcomes, and criminal justice policy reform. Raphael also works on immigration policy, research questions pertaining to various aspects of racial inequality, the economics of labor unions, social insurance policies, homelessness, and low-income housing. Raphael is the author (with Michael Stoll) of *Why Are so Many Americans in Prison?* (published by the Russell Sage Foundation in Press) and *The New Scarlet Letter? Negotiating the U.S. Labor Market with a Criminal Record* (published by the W.E. Upjohn Institute for Employment Research). Raphael is a research fellow at the National Bureau of Economic Research, the California Policy Lab, the University of Michigan National Poverty Center, the University of Chicago Crime Lab, IZA, Bonn Germany, and the Public Policy Institute of California. Raphael holds a Ph.D. in economics from UC Berkeley.



Robert B. Reich

Carmel P. Friesen Chairholder Emeritus and Professor of Public Policy

Robert B. Reich has served in three national administrations, most recently as secretary of labor under President Bill Clinton. He also served on President-Elect Obama's transition advisory board. He has published 18 books, including the best sellers *The Work of Nations*, which has been translated into 22 languages; *The Future of Success*, *Locked in the Cabinet*, *Aftershock: Beyond Outrage*, *Saving Capitalism*, *The Common Good*, and his most recent *The System: Who Rigged It, How We Fix It*. Mr. Reich is co-founding editor of *The American Prospect* magazine. In 2003, Reich was awarded the prestigious Vaclav Havel Vision Foundation Prize, by the former Czech president, for his pioneering work in economic and social thought. In 2008, Time Magazine named him one of the ten most successful cabinet secretaries of the twentieth century. His documentary, "Inequality for All" won the special jury prize at the 2013 Sundance Festival. His documentary "Saving Capitalism" was selected as a Netflix original in 2018. In 2014 he was elected a Fellow of the American Academy of Arts and Sciences. He received his B.A. from Dartmouth College, his M.A. from Oxford University where he was a Rhodes Scholar, and his J.D. from Yale Law School.



Jesse Rothstein
*Carmel P. Friesen Chairholder
and Professor of Public Policy
and Economics*

Jesse Rothstein is Professor of Public Policy and Economics, with affiliations in the Goldman School and the Department of Economics. He previously served as Chief Economist at the U.S.

Department of Labor and as Senior Economist with the Council of Economic Advisers, Executive Office of the President, both in the Obama Administration.

Rothstein's research focuses on education policy and on the labor market. His recent work includes studies of unemployment insurance, of intergenerational economic mobility, of the effects of recessions on young workers, and on the effects of higher education admissions policies on access to selective universities. His work has been published in leading journals in economics, public policy, education, and law.

In 2017, Rothstein founded the California Policy Lab (CPL), a new research center that facilitates close working partnerships between policymakers at state and local agencies in California and researchers at the university to help evaluate and improve public programs through empirical research and technical assistance.

CPL is currently studying take-up of the California EITC, the prevalence of independent contracting in the labor market, the effect of pre-trial representation for criminal defendants, and the use of unemployment insurance during the COVID-19 recession, among other topics.

Rothstein received a Ph.D. in economics and a Masters in Public Policy, both from the University of California, Berkeley, and an A.B. from Harvard.



Daniel Sargent
*Associate Professor of
History and Public Policy*

Daniel Sargent is a historian who specializes in international relations and foreign policy. His work explores how policy makers manage large-scale changes in their international arenas: shifts in the balance of power, economic transformations, social movements, and so on. His last book, *A Superpower Transformed: The Remaking of American Foreign Relations in the 1970s* (Oxford University Press) evaluated the strategies that US decision makers improvised in the 1970s in response to relative decline, accelerating globalization, and grassroots mobilizations for human rights. He is now writing an interpretation of the past, present, and prospects of the American world order under the working title *Pax Americana*. Sargent is a Ph.D. graduate of Harvard University and earned his BA degree from Cambridge University. He has taught at Berkeley since 2008 and joins the GSPP faculty for 2019–20.

Faculty & Administration



Given the relatively small class size, students enjoy a unique intimacy and camaraderie with one another and with faculty.



Jennifer L. Skeem

Professor of Public Policy and Social Welfare.

Director, Berkeley Risk-Resilience Lab & Mack Center on Mental Health and Social Conflict

Jennifer Skeem is a psychologist who writes and teaches about the intersection between behavioral science and criminal justice. Her research is designed to inform efforts to prevent violence, improve decision-making about people involved in the justice system, and achieve effective and equitable justice reform. Current projects include testing innovative correctional services for people with mental illness, identifying environmental factors that promote violence within institutions, and promoting prosocial behavior among juveniles at risk. Much of Skeem's current work addresses a surge of interest in the use of risk assessment to inform criminal sentencing—including how this practice may affect racial and economic disparities in imprisonment.

Skeem has authored over 150 articles and edited 2 books—including *Applying Social Science to Reduce Violent Offending*. She is past President of the American Psychology-Law Society and member of the MacArthur Foundation Research Network on Mandated Community Treatment. Skeem has delivered

congressional briefings on her work and consults with local and federal agencies on issues related to prevention of (mass) violence, community corrections, and sentencing and prison reform.



Gabriel Zucman

Associate Professor of Economics and Public Policy

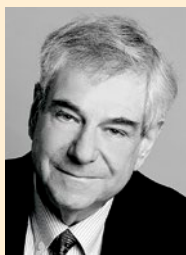
Gabriel Zucman is Associate Professor of Economics and Public Policy at the University of California, Berkeley and Director of the James M. and Cathleen D. Stone Center on Wealth and Income Inequality. He is the author of articles published in peer-reviewed journals such as the *Quarterly Journal of Economics*, the *American Economic Review*, the *Journal of Public Economics*, and of three books. His research focuses on the accumulation, distribution, and taxation of global wealth and has renewed the analysis of the macro-distributional implications of globalization. Gabriel Zucman received his Ph.D. in 2013 from the Paris School of Economics and taught at the London School of Economics before joining the Berkeley faculty in 2015. In 2019, he was awarded the Bernácer Prize and a Sloan Research Fellowship. He received the Excellence Award in Global Economic Affairs from the Kiel Institute for the World Economy in 2017, and the Best Young French Economist Prize awarded by Le Monde and Le Cercle des Économistes in 2018.



Eugene S. Bardach

Professor Emeritus of Public Policy

Eugene Bardach is a broadly based political scientist with wide ranging teaching and research interests. He focuses primarily on policy implementation and public management, and most recently on problems of facilitating better interorganizational collaboration in service delivery, e.g., in human services, environmental enforcement, fire prevention, and habitat preservation. He also maintains an interest in problems of regulatory program design and execution, particularly in areas of health, safety, consumer protection, and equal opportunity. His most recent published work has been about homeland security. Bardach has co-taught the first-year policy analysis workshop since 1973 and has developed novel teaching methods and materials. He has also directed and taught in residually based training programs for higher-level public managers and has worked for the Policy Analysis office of the U.S. Department of Interior.



John W. Ellwood

Professor of the Graduate School and Professor Emeritus of Public Policy

Initially trained as a political scientist, John Ellwood has spent most of his career as a policy analyst. His scholarly interests are in four areas: public sector budgeting, the management of analytic staffs in a political environment, organizational design and public management, and the American health care system.

Ellwood is part of the faculty group at GSPP that concentrates on public and nonprofit management. He is currently the Director of the Berkeley site of the Robert Wood Johnson postdoctoral program in health policy research. He is also the GSPP advisor to those who are pursuing joint degrees in public policy (the M.P.P.) and public health (the M.P.H.).



Lee S. Friedman

Professor of the Graduate School and Professor Emeritus of Public Policy

Lee Friedman is an economist interested in expanding the usefulness of microeconomics to policy analysis. Much of his research has focused on the design of environmental regulation to address climate change issues. He has also written extensively about energy regulation, including rate design issues and assessments of efforts to make more use of competition in electricity systems. Examples of his professional activities include evaluation of regulatory alternatives (for the California Public Utilities Commission, Energy recipient of the national Kershaw Prize for distinguished

contributions to public policy analysis, and of the University's Distinguished Teaching Award. He is the author of the book *The Microeconomics of Public Policy Analysis*, and he is the editor of the 2017 book *Does Policy Analysis Matter? Exploring Its Effectiveness in Theory and Practice*.



Jennifer M. Granholm

Emerita Adjunct Professor of Public Policy

Former two-term governor Jennifer M. Granholm led Michigan through a time of unprecedented challenge and change in the auto industry. Granholm became the first woman to be elected as governor of Michigan in 2002, and in 2006 she was re-elected with the largest number of votes ever cast for governor in the state. Due to term limits she served until 2011.

Prior to her two terms as governor, she was Michigan's attorney general from 1998-2002. After leaving public office, Granholm joined the faculty at UC Berkeley, teaching courses in law and public policy, and is senior research fellow at the Berkeley Energy and Climate Institute. She is chair of the American Jobs Project, a 13-university research initiative focused on state-based policies to create advanced manufacturing jobs in clean energy. Granholm is a senior contributor to CNN, the CEO of Granholm Mulhern Associates and serves on several boards. She anchored Current TV's "The War Room" during the 2012 presidential race. She is also the co-author of the political bestseller, *A Governor's Story: The Fight for Jobs and America's Economic Future*, and was co-chair of Hillary Clinton's 2016 presidential transition team.



Alain de Janvry

Professor Emeritus of Agricultural and Resource Economics

Alain de Janvry is an economist working on international economic development, with expertise principally in Latin America, Sub-Saharan Africa, the Middle-East, and the Indian subcontinent. Fields of work include poverty analysis, rural development, quantitative analysis of development policies, impact analysis of social programs, technological innovations in agriculture, and the management of common property resources. He has worked with many international development agencies, including FAO, IFAD, the World Bank, UNDP, ILO, the CGIAR, and the Inter-American Development Bank as well as foundations such as Ford, Rockefeller and Kellogg. His main objective in teaching, research, and work with development agencies is the promotion of human welfare, including understanding the determinants of poverty and analyzing successful approach to improve well-being and promote sustainability in resource use.

Given the relatively small class size, students enjoy a unique intimacy and camaraderie with one another and with faculty.



David L. Kirp

Professor of the Graduate School and Professor Emeritus of Public Policy

David L. Kirp, Professor in the Graduate School, is a former newspaper editor and policy consultant as well as an academic. His interests range widely across policy and politics. In his seventeen books and scores of articles in the popular press and scholarly journals he has tackled some of America's biggest social problems, including affordable housing, access to health, gender discrimination and AIDS. His main focus has been on education and children's policy, from cradle to college and career.

His latest book, *Improbable Scholars: The Rebirth of a Great American School System and a Strategy for American Education*, has garnered endorsements across the political spectrum. The book was named the outstanding book of the year by the American Education Research Association and chronicles how a poor urban school district in Union City, New Jersey has transported Latino immigrant children, many of them undocumented, into the education mainstream. A New York Times article making this "back to basics" reform argument was the second most widely emailed article. In recent months, he has written for the *Los Angeles Times*, *Washington Post*, *American Prospect*, *The Nation*, *Slate*, *Newsweek/Daily Beast*, *San Francisco Chronicle* and *New York Daily News*.

David Kirp is a graduate of Amherst College and Harvard Law School. He currently serves as a member of the board of two cutting-edge nonprofits, Experience Corps and Friends of the Children, and on the international advisory committee of Escuela Nueva, a Colombia-based nonprofit that has transformed the lives of nearly 10 million students across Latin America and elsewhere. At the Goldman School of Public Policy at Berkeley, he launched the New Community Fund, which promotes greater student diversity, and has underwritten an eponymously-named scholarship.



Jane Mauldon

Emerita Teaching Professor of Public Policy

Jane Mauldon earned her undergraduate degree from Oxford University in Politics, Philosophy and Economics and her Ph.D. from the Woodrow Wilson School of Public and International Affairs at Princeton University, where she studied demography and public policy. Her research focuses on policies that affect the well being of very low-income families, including income support, child protection, policies for disabled children and adults, and reproductive health. She co-teaches the first-year workshop course Introduction to Policy Analysis, and

an undergraduate class on Race, Ethnicity and Public Policy. She is currently researching states' policies surrounding child-only TANF, patterns of receipt of unemployment benefits and SNAP during the Great Recession, and the consequences for women of being denied an abortion.

She has worked as a coordinator for Advocates for Abused Women in Carson City, Nevada and as an economic developer at the McDermitt Indian Reservation in Nevada. She has also worked as a researcher at the RAND Corporation in Southern California and was a teacher of English in Laos.

Currently, she serves as the co-chair of U.C. Berkeley's Committee for the Protection of Human Subjects and as the Faculty Director of the Berkeley Master of Public Affairs program at GSPP.



Michael Nacht

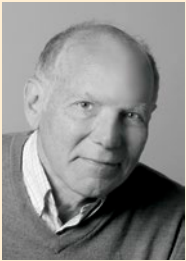
Dean 1998-2008

Thomas and Alison Schneider Chairholder Emeritus in Public Policy and Professor of the Graduate School

He is a noted scholar of US national security policy who has held leadership positions in academia and government.

He received a B.S. in Aeronautics and Astronautics from New York University and a PhD in Political Science with an emphasis on strategic studies from Columbia University and holds three other advanced degrees. He was a member of the directing staff of the Belfer Center for Science and International Affairs at the Harvard Kennedy School of Government (1973-1983), arguably the most prominent US academically-based research center on science, technology and public policy. He was Dean of the University of Maryland School of Public Affairs (1986-1994).

In government he twice was appointed to US Senate-confirmed positions. After unanimous Senate confirmation he was Assistant Director for Strategic and Eurasian Affairs of the U.S. Arms Control and Disarmament Agency (1994-1997) where he participated in five presidential summits with President Bill Clinton: four with Russian President Boris Yeltsin and one with Chinese President Jiang Zemin. Then again after unanimous Senate confirmation, he served under President Barack Obama as Assistant Secretary of Defense for Global Strategic Affairs (2009-2010) where he chaired the NATO High Level Group that establishes the alliance's nuclear weapons policies and for which he was awarded the Department of Defense Distinguished Service Medal, the Department's highest civilian honor.



Michael O'Hare

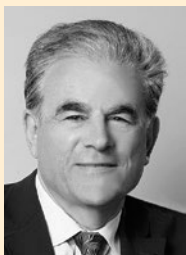
Professor of the Graduate School and Professor Emeritus of Public Policy

Trained at Harvard as an architect and engineer, Michael O'Hare came to Berkeley after teaching positions at MIT and Harvard's Kennedy School, and "real-world" employment at Arthur D. Little, Inc., Boston's Mus-

useum of Fine Arts, and the Massachusetts Executive Office of Environmental Affairs. His research history has included periods of attention to biofuels and global warming policy (he is a faculty associate of the U.C. Energy and Resources Group), and arts and cultural policy (his main focus at present); environmental policy generally; public management; and higher education pedagogy.

At Cal he has done applied research for state and nonprofit clients on diverse topics including funding of the state-Fish and Game Department, surface mining reclamation, revitalizing county fairs, and implementation of the state's Low Carbon Fuel Policy. He has had visiting positions at schools in Italy, Abu Dhabi, France, and Singapore.

His courses cycle among arts and cultural policy, a second-year, an elective on optimization and risk models, and a policy design studio.



Richard M. Scheffler

Professor Emeritus of Health Economics and Public Policy and Professor of the Graduate School

Richard M. Scheffler is an internationally recognized health economist with affiliations in the Goldman School and School of Public Health. He is the director of the Nicholas C. Petris Center on

Health Care Markets and Consumer Welfare, which focuses on consumer protection, affordability, and access to health care. He is also the Emeritus Chair in Healthcare Markets, endowed by the Attorney General for the State of California and the director of the Global Center for Health Economics and Public Policy. He is the director of the new Goldman study "Freaked Out Millennials: The Causes and Consequences of Anxiety Disorder."

Scheffler's areas of expertise include Health Policy and Health Economics, Competition and Regulation in Health Care Markets, the ACA and Covered California, Organization and Financing of Mental Health Services, Social Capital and Health, and the Global Health Workforce. He has worked and advised on health policy issues globally. He has been a consultant for the World Bank, WHO, and OECD, and a visiting professor at the London School of Economics, Charles University in Prague, University of Pompeu Fabra in Barcelona, Pontificia Universidad Catolica de Chile in Santiago, and Carlos III University in Madrid. He has been a Rockefeller and a Fulbright Scholar, and served as President of the International Health Economists Association 4th Congress in 2004. In 2015, Scheffler was awarded the Gold

Medal for Charles University in Prague for his longstanding and continued support of international scientific and educational collaboration. He was recently awarded the Berkeley Citation for his service to the University, including his founding of the joint Masters of Public Policy - Masters of Public Health program in 1986.



Eugene Smolensky

Dean 1988-1997, Professor Emeritus of Public Policy

Eugene Smolensky, an economist, studies welfare policy and the impact of economic and demographic changes on the distribution of income among various social groups. He is a member of the National Academies of Public Administration and of Social Insurance, and has served as Vice

President of the International Institute of Public Finance and Vice-Chair of the Board of Trustees of the Russell Sage Foundation. He is past editor of the Journal of Human Resources and has served as chair of the Department of Economics and director of the Institute for Research on Poverty at the University of Wisconsin-Madison. He served as Dean of GSPP from 1988 to 1997.

IN MEMORIAM

EMERITI FACULTY

C. Bartlett McGuire

Professor of Public Policy

Arnold J. Meltsner

Professor of Public Policy

John M. Quigley

Professor of Public Policy

Suzanne Scotchmer

Professor of Public Policy

Allan P. Sindler

Dean (1977-1986), Professor of Public Policy

Robert M. Stern

Visiting Professor

Percy H. Tannenbaum

Professor of Public Policy

Martin Trow

Professor of Public Policy

Aaron Wildavsky

Dean (1969-1977), Professor of Public Policy

Robert Berdahl

Professor of Public Policy

Michael Hanemann

Affiliated Professor in the Graduate School



Todd Achilles
Lecturer

Todd Achilles has spent most of career in the private sector, with leadership roles at Hewlett-Packard and T-Mobile. Currently, he is President and CEO of Evoca, a nextgen TV provider bringing new, competitive services to underserved markets across the US. A former U.S. Army tank officer, Todd holds several patents and is an American Marshall Memorial Fellow. He serves on the boards of The Atlantic Council (Wash DC), Idaho Center for Fiscal Policy (Boise), Frank Church Institute at Boise State University, and Boise State Public Radio. Todd received his BA from Claremont McKenna College, his MBA and MAIS from the University of Washington, and MPA from the Goldman School of Public Policy.



Dan Acland
Associate Teaching Professor

Dan Acland is a behavioral economist whose research spans the intersections of Behavioral Economics, Benefit-Cost Analysis, and Economic Philosophy. Topics of his past research include the implications of Behavioral Economics for government paternalism, the boundary between policy impacts that do and do not belong in benefit-cost analysis, and the implications of Behavioral Economics for the value of cash transfers in benefit-cost analysis.

His current work includes a study of the implications of Behavioral Economics for the social discount rate in benefit-cost analysis, and a new approach to addressing equity concerns in benefit-cost analysis.

Professor Acland teaches graduate courses in Economics for Policy Makers and Benefit-Cost Analysis, and a pair of undergraduate courses in Behavioral Economics. In addition, he leads a section of the Advanced Policy Analysis thesis seminar in the MPP program.



Ashley Adams
Lecturer

Dr. Ashley Adams serves as a Lecturer, and has also taught in the Public Policy and International Affairs Program (PPIA) at GSPP. She serves as Assistant Adjunct Professor of Public Policy and Interim Department Chair of Public Policy and Political Science at Mills College at Northeastern University. Since her 2016 dissertation research, Examining the Cultural and Historical Impact of the National Historic Site Designation in Nicodemus, Kansas, Dr. Adams has primarily dedicated her research platform to improving Black history preservation practices within national and state preservation systems. Publications from this work can be found in the *Journal of Management History and Great Plains Research*, amongst others. Dr. Adams is also currently working on her first book, which will detail preservation reparations criteria for the purposes of technical guidance in African American historic preservation reparations planning. She also serves as Nicodemus, KS Site Coordinator for the Voices & Votes: Democracy in America 2023 Smithsonian Exhibit, in partnership with Kansas Humanities, the Nicodemus Historical Society, and National Park Service. Aside from preservation policy work, Dr. Adams has also engaged projects related to BIPOC inclusive mental health services, uplifting underrepresented Oakland-based business owners, and participatory action research for quality pre-term birth initiatives.



Mia Bird
Adjunct Assistant Professor of Public Policy

Mia Bird is a policy analyst and applied researcher focused on criminal justice reform and the intersections of criminal justice, health, and social safety net policies. Prior to joining the Berkeley faculty, she spent seven years at the Public Policy Institute of California as a research fellow. At PPIC she founded and directed the creation of a criminal justice data system that standardized and integrated individual-level data from 12 county justice systems, representing 60 percent of the state population, with data from state-level correctional and justice systems. These data allowed for the monitoring and evaluation of the effects of a wave of criminal justice reforms in California. She now serves as an expert affiliate with the California Policy Lab,

working to build the criminal justice data infrastructure of the state. Her work has been funded by Arnold Ventures, The California Endowment, The California Wellness Foundation, The National Institute of Justice, and The Russell Sage Foundation. Bird has been published in the *ANNALS of the American Academy of Political and Social Science*, *Criminology and Public Policy*, and the *Criminal Justice Policy Review*.



Joshua Blumenstock
Chancellor's Associate Professor

Joshua Blumenstock is a Chancellor's Associate Professor at the U.C. Berkeley School of Information and the Goldman School of Public Policy. He is the Co-director of the Global Policy Lab and the Center for Effective Global Action. Blumenstock does research at the intersection of machine learning and empirical economics, and focuses on using novel data and methods to understand the causes and consequences of global poverty, and to improve the lives of disadvantaged people around the world. He has a Ph.D. in Information Science and a M.A. in Economics from U.C. Berkeley, and Bachelor's degrees in Computer Science and Physics from Wesleyan University. He is a recipient of awards including the NSF CAREER award, the Intel Faculty Early Career Honor, and the U.C. Berkeley Chancellor's Award for Public Service. His work has appeared in general interest journals including *Science*, *Nature*, and *Proceedings of the National Academy of Sciences*, as well as top economics journals (e.g., the *American Economic Review*) and computer science conferences (e.g., ICML, KDD, AAAI, WWW, CHI).



Angela Glover Blackwell
Professor of Practice, Public Policy

Angela Glover Blackwell is Founder in Residence at PolicyLink, the organization she started in 1999 to advance racial and economic equity for all. Under Angela's leadership, PolicyLink gained national prominence in the movement to use public policy to improve access and opportunity for all low-income people and communities of color, particularly in the areas of health, housing, transportation, and infrastructure.

As a leading voice in the movement for equity in America, Angela serves on numerous boards. She advised the Board of Governors of the Federal Reserve as one of 15 members of its inaugural Community Advisory Council, and in 2020 was appointed by California Governor Gavin Newsom to the state Task Force on Business and Jobs Recovery. She is the 2018 recipient of the John W. Gardner Leadership Award, presented by the Independent Sector, and in 2017, she received the Peter E. Haas Public Service Award from the University of California, Berkeley.

Angela is the co-author of *Uncommon Common Ground: Race and America's Future*, and she authored *The Curb Cut Effect*, published in the *Stanford Social Innovation Review* in 2017. She is also the host of the *Radical Imagination* podcast.



George Blumenthal
Director, Center for Studies in Higher Education
Chancellor Emeritus, UC Santa Cruz

George Blumenthal served for 13 years as UC Santa Cruz's 10th chancellor. Previously, he was a faculty member in astronomy and astrophysics at that campus. As a theoretical astrophysicist, Blumenthal made pathbreaking contributions to our understanding of the origin of structure in the universe, including the key role that dark matter plays in forming galaxies and other structure. He is a co-author of two textbooks, *21st Century Astronomy* and *Understanding Our Universe*. Prior to his appointment as chancellor, Blumenthal served as chair of the Santa Cruz division of the academic senate, as the faculty representative to the UC Board of Regents, and as chair of the UC systemwide academic senate, for which he received the Oliver Johnson Award for Distinguished Leadership in the Academic Senate. Blumenthal serves on a number of nonprofit boards, including the California Institute for Regenerative Medicine, the California Association for Research in Astronomy, and the American University of Armenia, among others.



Juanita Capri Brown
Lecturer

The principal of Juanita Capri Brown & Associates, Brown specializes in racial equity, strategic engagement, personal and collective liberation. She supports the public and

non-profit sectors, foundations and communities across the nation and internationally to undertake breakthrough approaches. Brown's work results in staff, students, residents, educators and executives more productively agitating systems and transforming relationships in their realms of influence. She is currently a lecturer at the Goldman School teaching a course she designed titled 'Collective Liberation, Self-Solidarity and Policymaking'. Brown is also an artist. She wrote her latest multimedia one-person show which she offered in October 2019 at the Flight Deck Theater in Oakland, CA. A published writer, she is working on her first book. Brown received her undergraduate degree from Stanford and then her Master of Public Policy (2006) from the University of California at Berkeley. A Chicago native, Brown cherishes her family roots which run deep in the state of Alabama.



Héctor Cárdenas
Continuing Lecturer

Héctor Cárdenas holds Ph.D. and M.P.P. degrees from the Goldman School of Public Policy as well as an M.P.A. degree from France's *École Nationale d'Administration*. He specializes in regulatory policy, service delivery, information technology strategy, operations management and Big Data analytics. He is the President and CEO of The Ergo Group, a public policy and information technology strategy consulting firm. Over the past 19 years he has led the firm's consulting projects for government agencies in the U.S., México, and Canada and Singapore, as well as for the World Bank Group and Interamerican Development Bank. These projects have been focused on regulatory reform, criminal justice reform, consular operations, strategic planning and process improvement. His passion is helping governments to best use data driven decision-making and IT to improve operations and outcomes of public policies and government programs. He teaches a spring semester course on U.S. - Mexico binational policy and leads one of the Advanced Policy Analysis and two Capstone Analytic Project sections for the MPP and MPA degrees respectively. He is also a visiting lecturer at Centro de Investigación y Docencia Económicas (CIDE) in Mexico City and a member of Mexico's Foreign Relations Council (Comexi).



Anibel Ferus-Comelo
Lecturer

Dr. Anibel Ferus-Comelo directs the Labor Studies program at UC Berkeley through her joint appointment at the UC Berkeley Labor Center and GSPP. Dr. Ferus-Comelo received the 2021-2022 Chancellor's Award for Public Service for her design of service-learning internships and collaborative research projects with community partners involving graduate and undergraduate students. Her research interests focus on labor standards, corporate social responsibility, gender, migration, the political economy of India, and the governance of global supply chains. Before coming to Berkeley, Dr. Ferus-Comelo conducted research and policy analysis in Europe and India for eighteen years. She brings an interdisciplinary, transnational lens on social movements and public policy. She is an affiliated faculty of the Berkeley Institute for South Asia Studies. Courses taught at Berkeley include: *Challenges and Innovation in Labor Policy, Work, Justice and the Labor Movement, Field Study in Labor and Community Organizing Berkeley, Changemaker: Labor Research for Action and Policy (Labor-RAP), Collaborative Innovation: The Future of Work for People and the Planet (a Big Ideas course)*.



Brent Copen
Lecturer

Brent Copen is dedicated to strengthening the sector by helping nonprofits develop more robust financial management practices. He has presented hundreds of workshops and training nationally to CEO's, board members, funders and emerging leaders; and has consulted extensively to a wide variety of nonprofits across sub-sectors. Copen currently holds four graduate level teaching positions at U.C. Berkeley. He co-authored *The Nonprofit Business Plan*, a practical guide to help nonprofit leaders establish a sustainable, results-driven business plan. Copen is currently the Chief Financial Officer at Tiburcio Vasquez Health Center. He received a Master in Public Administration degree from Columbia University's School of International and Public Affairs.



Timothy M. Dayonot

Continuing Lecturer

Timothy Dayonot is a Senior Lecturer at the Haas School of Business at U.C. Berkeley, where he teaches negotiations and conflict resolution. At the Goldman School, he teaches negotiations and legislative advocacy and has also taught negotiations at the U.C. Berkeley School of Law and negotiation workshops at Stanford University. He served as an aide to Governor Jerry Brown and as the Director of the California Department of Community Services & Development, under both Governor Gray Davis and Governor Arnold Schwarzenegger. A former member of the State Bar of California Alternative Dispute Resolution Committee, his negotiations workshops have been approved by the California Bar for continuing education. He served on the California Board of Accountancy and worked as the Manager of Government and Public Affairs for the San Francisco Public Utilities Commission. An experienced mediator, he runs a negotiations training and consulting firm. He holds a Master in Public Administration from Harvard University where he studied negotiations and a Juris Doctor from the University of San Francisco School of Law.



Charlotte Hill

Lecturer

Charlotte Hill is a political scientist at UC Berkeley, where she researches the impact of electoral and voting reforms on political participation. Her research has been published in top journals including the *Journal of Politics* and *Electoral Studies* and featured in media outlets including the *New York Times*, *CNN*, the *Washington Post*, and *Vox*. She regularly advises organizations focused on improving democracy policy and increasing voter turnout.

Before entering academia, Dr. Hill held senior communications roles for the nonpartisan political reform organization RepresentUs and the international petition platform Change.org. She recently served as the vice president of the San Francisco Elections Commission, where she helped oversee local election administration, and currently sits on the Oakland Public Ethics Commission. She holds a BA, an MPP, and a Ph.D in Public Policy from UC Berkeley.



Josie Innamorato

Lecturer

Josie Innamorato leads a course in applying design thinking strategies to complement the Eightfold Path. Her practice unites constituents' lived experience with traditional approaches to policy analysis to make more useful and usable recommendations for change. Innamorato's approach is informed by her experience as an engineer in city infrastructure, as an educator for high school students and incarcerated adults, and as a program evaluator for government and non-profit clients. Innamorato currently works for The Heinz Endowments in her hometown, Pittsburgh, PA. Innamorato holds a BS from the School of Engineering and Applied Science at the University of Virginia and an MPP from the Goldman School of Public Policy at the University of California, Berkeley. She is a LUMA certified human-centered design practitioner and, via Teach For America, is a credentialed mathematics educator in California.



Kiran Jain

Lecturer

Kiran Jain brings a practitioner's lens to GSPP as an advisor to urban technology start-ups and local governments on cutting edge legal and public policy issues including privacy-first data applications for the built environment, infrastructure innovation in the public rights of way, and community-owned microgrids. She is the former Chief Resilience Officer for the City of Oakland and wrote the *Resilient Oakland Playbook*. She also served as a senior deputy city attorney focusing on land use, urban redevelopment and municipal law.



Margaretta Lin

Lecturer

Margaretta teaches Critical Race Theory and Practice and Law and Public Policy. She has served as a long-time leader in racial and social justice movements as a government official, human rights lawyer, teacher, and social venture entrepreneur. She currently serves as the founding

director of Just Cities, a racial justice policy and planning organization. Margaretta also teaches in the Department of City and Regional Planning and is a researcher with the Institute of Urban and Regional Development. Her current research and policy design work focuses on the intersections between mass incarceration, housing, and urban displacement utilizing the framework of transformative policy design and planning. She is the PI of designing the nation's north star Fair Chance Housing laws and conducting the first national impact evaluation study. Margaretta received her JD from Berkeley Law, Masters in Asian Studies from UC Berkeley, and BA from the University of Virginia.



Daniel Lindheim

Professor of Practice

Faculty Director, Center on Civility and Democratic Engagement

Dan was Oakland's city manager and previously headed its planning, building and redevelopment agency. In prior lives, Dan was a high-tech CEO, a senior World Bank economist and Congressional staffer. He also headed a Chilean regional development office, taught economics at the University of Chile, and did health research at Johns Hopkins. Active locally, Dan chaired or served on various city commissions including planning, budget, and peace and justice and currently serves on the City of Berkeley Task Force on Reimagining Policing. Dan was longtime chair of the school district planning and oversight committee and serves on its audit and budget advisory commissions. Dan co-chaired three successful parcel tax campaigns, was Grand Jury foreman a state champion youth soccer coach, played tennis for Cal, and as a union electrician installed every speaker in the Oakland Coliseum. Dan has written on housing, economic development, national security, budgeting, pensions, and school finance. Dan has a Ph.D. in City and Regional Planning from UC Berkeley, a JD from Georgetown, and is a member of the California Bar. He also has a BA in economics and master's degrees in city planning and public health from UC Berkeley. He has been a GSPP professor since Spring 2014.



Larry Magid

Lecturer

Larry Magid is a lecturer at the Goldman School of Public Policy at UC Berkeley where he teaches about his passion: the intersection of politics and public policy. Drawing upon his three

decades of leadership experience in electoral campaigns, legislative politics, public policy and management, he advises leading public and private organizations to develop and achieve strategic public policy goals at the national, state and local level. Larry Magid has served as Executive Director of City CarShare; Deputy Secretary for Transportation in the California Business, Transportation and Housing Agency; and Executive Director of the California Alternative Energy and Advanced Transportation Financing Authority (CAEATFA).

In the 1990s Magid served as General Counsel and Director for Transportation Legislation for the National Governors' Association, and as a policy analyst in the Clinton Administration's Office of Management and Budget. A graduate magna cum laude from Harvard College, he earned a law degree from the University of California at Berkeley School of Law (Boalt Hall), and a Masters in Public Policy from the John F. Kennedy School of Government at Harvard University.



Dan Mulhern

Lecturer

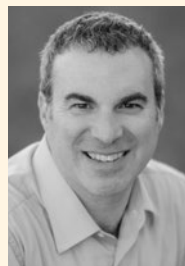
Dan Mulhern is a nationally recognized expert in the fields of leadership and organizational culture. He has worked with a great range of organizations, corporations and government. He has frequently won

awards for his leadership in the mentoring field and received praise for his work on the changing roles of men and his dedication to helping companies create great places to work. Through his work as a public speaker, radio personality, writer, leadership coach, and consultant, he has inspired thousands to lead with their best he has inspired thousands to lead with their best self. He teaches at Haas, Boalt, and Goldman and received the Golden Apple Award (student-voted most outstanding teacher at Berkeley) in Spring 2013.

Mulhern has written two books on leadership, *Everyday Leadership: Getting Results in Business, Politics and Life* and *Be Real: Inspiring Stories For*

Leading At Home And Work. He co-authored *A Governor's Story: The Fight for Jobs and America's Future* with his wife, former Michigan Governor Jennifer Granholm, which discusses leadership during difficult times, focusing on how Granholm led Michigan out of its major economic meltdown.

Mulhern is an honors graduate of Yale University and Harvard Law School. He and his wife Jennifer have three children – Kate, Cecelia and Jack.



Matt Ranen

Lecturer

Matt Ranen teaches scenario planning for use in policy development and organizational strategy. His work emphasizes taking a systemic, long-term view to better anticipate emerging

issues and consider more imaginative solutions to current and future challenges.

His teaching draws upon his experience as a scenario planning and strategy consultant, helping high impact non-profits and major corporations develop growth, innovation, and risk management strategies as their sectors face significant change and uncertainty. Prior to his current practice, he was a senior leader at Global Business Network (GBN), the world's premiere futures and scenario planning consultancy, a part of the Monitor Group strategy consulting firm, and later, part of Deloitte Consulting. Before that, he spent 11 years in new product development in the media, advertising, and technology sectors. He holds an MBA from the Northwestern Kellogg School of Management and a BA in applied math from Harvard University.



Larry A. Rosenthal

Executive Director for Online Initiatives
Program Director, Center on Civility and Democratic Engagement

A graduate of the MPP and PhD programs at the Goldman School, Rosenthal's roles combine teaching and programmatic work. His research occupies the law-policy intersection in the fields of housing, urban policy, and civic engagement. Recent work focuses on municipal fiscal distress and the dynamics of nonprofit housing production. Among other publications Rosenthal coedited, with the late John Quigley, *Risking House and Home: Disasters, Cities, Public Policy* (Berkeley

Public Policy Press, 2008) and coauthored *Our Town: Race, Housing, and the Soul of Suburbia* (Rutgers University Press, 1995) [with David Kirp and John Dwyer]. His recent "Irrational Exuberance at City Hall" project was supported by a grant from the MacArthur Foundation under its "How Housing Matters" initiative. Originally trained as an attorney, Rosenthal served as law clerk with the late Justice Marcus M. Kaufman of the California Supreme Court, and associate at the San Francisco law firm of Hanson Bridgett. For many years he served as Executive Director of the Berkeley Program on Housing and Urban Policy. Rosenthal's recent courses at GSPP include Introduction to Public Policy Analysis, Advanced Policy Analysis, Law in the Public Interest, Cities & Their Citizens, Inferential Statistics for Policy Makers, and Acting Ethically & Getting Things Done.



Meredith Sadin

Adjunct Assistant Professor of Public Policy

Meredith Sadin is a political scientist focused on issues of political engagement, inequality, and criminal legal reform. She is a Senior Researcher at GSPP's

Possibility Lab, where she conducts applied, data-driven research on key priorities in government and evaluates initiatives that aim to innovate around challenges. Her the public sphere. Meredith's work has been funded by the National Science Foundation, Russell Sage Foundation, Spencer Foundation, and Robert Wood Johnson Foundation. Her research has been published in the *American Political Science Review*, *Journal of Politics*, *Public Opinion Quarterly*, *Punishment & Society*, *Journal of Experimental Criminology*, and *Political Psychology* and cited in *The New York Times*, *Washington Post*, and *New Republic*.



Jeffrey Selbin

Lecturer, Clinical Professor of Law

Jeffrey Selbin is a clinical professor of law and faculty director of the Policy Advocacy Clinic (PAC), which he founded in 2015. PAC is the nation's premier interdisciplinary clinic where law and

public policy students team up to take on systemic racial and economic injustice in the criminal legal system. From 2014 to 2017, Selbin served as co-faculty director of the Henderson Center for Social Justice, and from 2006 to 2015, he served as

faculty director of the East Bay Community Law Center (EBCLC), Berkeley's community-based clinic. Selbin founded EBCLC's HIV/AIDS Law Project in 1990 as a Skadden Fellow, and served as EBCLC's Executive Director from 2002 through 2006. During the 2010-11 academic year, Selbin was a visiting clinical professor at Yale Law School. In 2018, Selbin received the Society of American Law Teachers Great Teacher Award and the U.C. Berkeley Chancellor's Award for Community Engaged Teaching.



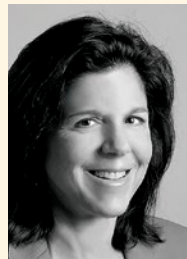
Sudha Shetty

Assistant Dean Emerita, International Alliances & Partnerships/Global & Executive Programs

Sudha Shetty is the Assistant Dean for International Alliances & Partnerships/Global & Executive Programs. Previously she served as the Director of the International Fellowship Program and a graduate faculty member at the University of Minnesota's Hubert H. Humphrey Institute where she managed Fulbright, Muskie, Bolashak and Government of India Fellows; developed and implemented trainings for these emerging international leaders strategic planning, policy development, leadership development, and media and communications; and created a partnership with Hennepin County and engaged the directors and department heads to be mentors for the Fellows.

She speaks and writes extensively on domestic violence issues facing immigrant women and women of color. She has been a consultant to the law firm of Dorsey & Whitney, L.L.P. on diversity issues and in her former role as Director of the Seattle University Law School's Access to Justice Institute she developed a variety of legal access projects focused on battered women. She was honored by the Washington Women Lawyers Foundation for her work with underserved communities.

Ms. Shetty received a Bachelors Degree in Sociology and Psychology from Sophia College in Bombay, India, and a Juris Doctor from the University of Bombay, India.



Amy Slater

Lecturer

Amy Slater teaches negotiations and conflict resolution at the Goldman School of Public Policy and the UCB School of Public Health Executive Education MPH program. During her career as an attorney, she was the general counsel of Ask Jeeves, Inc. (now Ask.com). Before joining Ask Jeeves, Amy worked in private practice and in corporate legal departments in San Francisco, Redwood City and Oakland. Amy has a B.A. degree from the University of California, San Diego and a J.D. from UC Hastings.



Erika Weissinger

Lecturer

Erika is a qualitative researcher who specializes in child welfare. Erika coordinated the Child Welfare Qualitative Data Mining Project at U.C. Berkeley's Mack Center on Nonprofit & Public-Sector Management in the Human Services. She served as Data and Research Manager at JBS International, where she oversaw data collection and analysis for the Child and Family Services Reviews (CFSRs) conducted by the Children's Bureau. Erika was a member of the Deloitte Consulting executive turnaround team that helped the District of Columbia's Child and Family Services Agency emerge from court receivership. She received a Ph.D. from U.C. Berkeley's Goldman School of Public Policy and her Masters in Policy Studies from Johns Hopkins University. Her dissertation examined barriers in the foster care adoption process. She is the Board Treasurer for Waterside Workshops, a local non-profit that provides job training and wraparound services for young people emerging from foster care and the juvenile justice system.



Christopher Weare

Lecturer

Christopher Weare, Ph.D., is the President of the Center for Homeless Inquiries. The Center conducts research, advocacy, and training to improve the quantity and quality of data analytics employed to improve the

design and effectiveness of homeless programs. Previously, he was a professor at the USC Price School of Public Policy where he was the Associate Director of the Civic Engagement Initiative and was the founding Director of the Price School on-line Master of Public Administration Program. More recently, he led data analytic teams for non-profit organizations, including the lead agency for Sacramento's Continuum of Care for homeless programs.



Steven Weissman

Lecturer Emeritus

Steve Weissman teaches energy and climate law and policy, and energy regulation. He co-founded and directed the Energy Law program at Berkeley Law. Weissman is a former administrative law judge from the California Public Utilities Commission, where he was also a policy and legal advisor to three different commissioners. He is an energy and environmental attorney and mediator, and a former Principal Consultant to the California State Assembly. He served as Legal Director for the Local Government Commission, a policy think tank serving local governments, where he drafted the Ahwahnee Principles—a list of important elements of transit-oriented and pedestrian-oriented development, prepared along with top architects and planners. He has served on several citizen commissions in the City of Berkeley. In 2013, he was a Fulbright Scholar, teaching law and policy at a Universitat Rovira i Virgili near Barcelona and is currently on the roster of Fulbright Specialists.



David Wooley

Lecturer

Director: Environmental Center

David Wooley is a Lecturer and Director of the Environmental Center at the Goldman School of Public Policy. Previously, David served as an Assistant Attorney General in NY, taught energy and environmental law at Pace University Law School and was a founder of and Executive Director of the Pace Energy Project. Later he directed the American Wind Energy Association's Northeast Policy Project, served as Counsel to the *Clean Air Task Force* and as Vice President for Domestic Policy Initiatives at the Energy Foundation in San Francisco. David is co-author of *Thomson-Reuters Clean Air Act Handbook (1994-2022)* and in 2020-21 co-authored series of studies (*2035Report.com*) regarding decarbonization of America's electric power sector, and transportation sectors.

Student Services

GSPP Student Services Staff Contact Information



Annie Campbell Washington
Senior Assistant Dean for Academic Programs and Dean of Students
Email: acw@berkeley.edu



Lezley Hightower
Associate Director of MPP and Ph.D. Program Admissions
Email: lhightower@berkeley.edu



Michelle Reddy
Program Director, Master of Development Practice
Email: miredddy@berkeley.edu



Tom Hernandez
Associate Director of Career Services/MPA Career Advisor
Email: tom.hernandez@berkeley.edu



Cecille Cabacungan
Managing Director of Career & Alumni Services and Ph.D. Student Affairs Advisor
Email: cecille@berkeley.edu



Mohamed Sesay
Associate Director of Career Services/ MPP Career Advisor
Email: mseysay@berkeley.edu



Jalilah LaBrie
Director of MPP Student Affairs Undergraduate Minor Advisor
Email: jalilah@berkeley.edu



Krista Zimmerman
Associate Director of Career Services/MDP Career Advisor
Email: krista.zimmerman@berkeley.edu



Lisa Robinson
Director of Admissions and Student Services for the Master of Development Practice Program
Email: lrobinson@berkeley.edu



Emilie Dandan
Curriculum Planner & Scheduling Coordinator & Undergraduate Minor Advisor
Email: ebdandan@berkeley.edu



Simón Bryce
Associate Director for the Master of Public Affairs Program
Email: simonbryce@berkeley.edu



Aarin Walker
PPIA Program Director
Email: ppiaprogram@berkeley.edu

Career Services



U.C. Berkeley



"The education which I received at GSPP has assisted me materially throughout my professional career and particularly in the positions in which I have served in both the Federal and California State governments."

Ann Veneman M.P.P. '71

Former U.S. Secretary
of Agriculture

Washington, DC

Former Executive
Director, UNICEF

New York, NY



Outstanding Resources

The Goldman School Career Services Team is committed to helping GSPP students in reaching their career goals. Career Services Team members meet individually with students and provide career guidance and advice during their entire time at GSPP. The team also coordinates events designed to give students exposure to a broad range of prospective employers and career paths in the U.S. and abroad; networking events to facilitate professional connections with policy professionals and alumni; and workshops to facilitate students' career development.

GSPP provides the following services and resources to all students:

- One-on-One Career Advising
- On-Line Career Network, Job Board and Interviewing tools
- Employer Information Sessions

- Career Development Workshops
- Networking Events
- Access to a global network of GSPP alumni and prospective employers

Expand Your Network

The GSPP Alumni Network is an incredible resource for GSPP students. GSPP has over 3,000 alumni nationwide and around the world, representing the MPP, MPA, MDP, and Ph.D. degree programs. Through our strong alumni base, students have access to expanded career networks as well as strong partnerships with employers and recruiters. GSPP alumni help students in a variety of ways by providing career advice, job-search strategies, information on internship and full-time job opportunities, and much more.

For more information about Career Services, visit <http://gspp.berkeley.edu/career-services>.

Organizations Hiring from GSPP (Partial List)

This partial list includes employers hiring alumni and students for full-time jobs and summer internships.

International Governments

National Government Agencies in Argentina, Australia, Austria, Brazil, Canada, China, Chile, Colombia, France, Germany, India, Indonesia, Japan, Kenya, Republic of Korea, Malaysia, Mexico, New Zealand, Pakistan, Peru, Spain, South Africa, Thailand, Timor-Leste, Vietnam, United Kingdom

Multilateral Organizations

Asian Development Bank
Climate Action Network Europe
Food and Agriculture Organization of the United Nations
Global Development Network
Inter-American Development Bank
International Atomic Energy Agency
Institute for European Environmental Policy
International Fund for Agricultural Development
International Monetary Fund
International Organization for Migration
Organisation for Economic Co-Operation and Development
United Nations
United Nations Development Program
United Nations Economic and Social Commission for Asia and the Pacific
United Nations Economic and Social Commission for Western Asia
United Nations Educational, Scientific and Cultural Organization
United Nations Environment Programme
World Bank
World Economic Forum
World Health Organization
UNICEF

U.S. Federal Government

Agency for International Development
Cabinet Departments: Agriculture, Commerce, Defense, Education, Energy, Health and Human Services, Homeland Security, Housing and Urban Development, Interior, Justice, Labor, State, Transportation, Treasury
Centers for Disease Control & Prevention
Congressional Budget Office
Congressional Research Service
Consumer Financial Protection Bureau
Environmental Protection Agency
Executive Office of the President: Council of Economic Advisers, Council on Environmental

Quality, Office of Management and Budget, National Economic Council, National Security Council
Federal Communications Commission
Federal Deposit Insurance Corporation
Federal District Courts (various locations)
Federal Energy Regulatory Commission
Federal Reserve Board of Governors
Federal Trade Commission
General Services Agency, 18F
Government Accountability Office
House of Representatives
Lawrence Berkeley National Laboratory
Lawrence Livermore National Laboratory
Medicaid and CHIP Payment and Access Commission
National Institutes of Health
National Park Service
Office of Personnel Management
Office of the Vice President
Presidential Management Fellows Program
Senate
Small Business Administration
Social Security Administration

State and Local Government

Association of Bay Area Governments
Council of State Governments
National Governors Association
State government agencies in: Alaska, Arizona, California, Colorado, Connecticut, Georgia, Hawaii, Illinois, Louisiana, Maine, Maryland, Massachusetts, Michigan, Minnesota, Missouri, Nevada, North Carolina, New Jersey, New York, Ohio, Oregon, Rhode Island, Texas, Utah, Vermont, Virginia, Washington, Wisconsin
Local and County government agencies and school districts in: Washington DC, Atlanta GA, Baltimore MD, Chicago IL, Detroit MI, New York NY, Boston MA, Portland OR, Philadelphia PA, Cleveland OH, Minneapolis MN, Nashville TN, Austin TX, Houston TX, San Antonio TX, Seattle WA, Berkeley CA, Los Angeles CA, Oakland CA, Sacramento CA, San Francisco CA, San Mateo CA, San Diego CA, San Jose CA

Research Organizations

American Enterprise Institute
Brattle Group

Brookings Institution
Center for American Progress
Greenlining Institute
Institute for Economics and Peace
International Food Policy Research Institute
Mathematica
MDRC
National Science Foundation
Public Policy Institute of California
RAND Corporation
Rocky Mountain Institute
Urban Institute

Non-Profit Organizations

Domestic & International
Abdul Lateef Jameel Poverty Action Lab
American Civil Liberties Union
American Wind Energy Association
Amnesty International
The Asia Foundation
Aspen Institute
Association for Public Policy Analysis and Management
Bill & Melinda Gates Foundation
BlueGreen Alliance
Blue Shield of California Foundation
Boston Children's Hospital
The Broad Foundation
Build It Green
Business for Social Responsibility
California Association of Public Hospitals
California Budget and Policy Center
Catholic Relief Services
Center for Clean Air Policy
Center for Climate & Energy Solutions
Center for Strategic and International Studies
Center on Budget & Policy Priorities
Children Now
Climate Policy Initiative
ClimateWorks Foundation
Color of Change
Colorado Education Initiative
Danish Refugee Council
The David & Lucille Packard Foundation
Education Trust
Energy Innovation: Policy and Technology LLC
Environmental Defense Fund
Ewing Marion Kauffman Foundation
Fight Crime: Invest in Kids
Ford Foundation
FSG
Generation Housing
Global Fund for Women
IDinsight
Innovations for Poverty Action
The James Irvine Foundation
Jobs for the Future
John Burton Advocates for Youth
Kaiser Family Foundation
Laura and John Arnold Foundation
Latino Community Foundation
Learning Policy Institute
Lucille Packard Foundation for Children's Health
NAACP
National Center for Youth Law
National Nurses United
National Organization for Women
Natural Resources Defense Council
The Nature Conservancy
Navajo Tax Commission
NextGen Climate
New America
Oakland Thrives
One Acre Fund
The Pew Charitable Trusts
PolicyLink
Population Services International
Protect Democracy
REDF
The Reset Foundation
Richard & Rhoda Goldman Fund
Rockefeller Foundation
Rocky Mountain Institute
The San Francisco Foundation
The Sobrato Foundation
SEIU
Sierra Club
Tipping Point Community
University of California
United Way
Vera Institute of Justice
Walter & Elise Haas Fund
WestEd
William & Flora Hewlett Foundation
William J. Clinton Foundation
World Resources Institute
Woodrow Wilson Foundation
Zuckerberg San Francisco General Hospital and Trauma Center
US Ignite
US Institute of Peace

Private Sector Corporations/
Consulting Firms

Private Sector Corporations/ Consulting Firms

ABT Associates
Accenture
Amazon
Amgen
Aurora Energy Research
Avalere Health
Bain International
Bank of America
BlackRock
Bloom Energy
Blue Cross
Blue Shield
Booz Allen Hamilton
Boston Consulting Group
The Bridgespan Group
California Housing Partnership Corporation

Cisco
Dahlberg Global Development Advisors
Deloitte
Economic & Planning Systems
Energy+Environmental Economics (E3)
Energy Solutions
Ernst & Young
Facebook
Fairbank, Maslin, Maullin, Metz & Associates
General Electric
General Motors
Google
Goldman Sachs
Harder+Company
Community Research
Hewlett-Packard
IBM Consulting
ICF Consulting
IDEO
IMPAQ International
Kaiser Permanente
Levi Strauss & Co.
Learning for Action
The Lewin Group
Lockheed Martin
Lyft
Manatt Health
McKinsey & Company
Microsoft Corporation
Moody's Investor Services
National Economic Research Associates
Nexant
Nike, Inc.
Pacific Gas and Electric Co.
PriceWaterhouseCoopers
Public Financial Management
Public Profit
Robert Bosch Health Care
RTI International
Salesforce
Semptra Utilities
Social Impact
Social Policy Research Associates
SolarCity
SRI International
Standard and Poor's Ratings Group
Starbucks
SunPower Corporation
Target Corporation
Third Plateau
Third Sector Capital Partners
TikTok
Twitter
Tesla
Uber
Union Bank of California
Visa Inc.
Zillow

Student Organizations



U.C. Berkeley



As an aspiring Master's in Public Policy degree holder, my mission is to bring awareness of the historically oppressed (primarily: people of color, immigrants, the incarcerated, women, and children) to the forefront of policy. Aligned with a similar vision of advocating for equitable policy, I knew GSPP's rigorous curriculum and professional training would sharpen my quantitative and analytical skills.

Beyond its exceptional education, the genuine support from faculty and staff has made my experience at GSPP wholesome and belonging as GSPP embodies what it means to be a community leader, source, and ally that empowers others with the equity we all deserve.

Karla Dangely Covarrubias (Foster)

Master of Public Policy Candidate, 2024

Elected representatives from the first-year, second-year, and doctoral students meet regularly with the dean and assistant dean, thus providing a continuing avenue for two-way communication, early identification of problems, and effective discussions of how best to resolve them.

In addition, students have the opportunity to take on leadership roles by getting involved in current or launching new student organizations, both at GSPP and on campus. Here is a sampling of the diverse organizations that have been launched at GSPP.

Black Students in Public Policy (BIPP)

BIPP's mission is to encourage the discussion of public policy issues as they relate to the Black community. They engage with Cal undergrads through mentorship programs, host film screenings/discussions and volunteer together in the local community. BIPP also provides a social network for African American students at GSPP through social gatherings and team building activities.

Data in Public Policy (DiPP)

The Data in Public Policy (DiPP) club is a community of people interested in the intersection of data science and public policy. We organize the following activities: A speaker series examining the work of academics and professionals using data to solve public policy problems, technical workshops on data science applications in public policy analysis, career development and networking opportunities.

Criminal Justice Policy Group (CJPG)

The Criminal Justice Policy Group is a student group dedicated to bringing criminal justice issues to the forefront of the student consciousness. The group wants to create more dialog around issues involving the prison system, policing, the courts, and community and neighborhood involvement with these institutions. They hope to continue to foster debate through their own group meetings as well as bigger panel discussions.

Environmental Policy Group (EPG)

The Environmental Policy Group (EPG) organizes activities for GSPP students, faculty, and alumni interested in environmental issues, including hikes,

film viewings, an annual Environmental Policy Dinner, and student participation in conferences. EPG also maintains a list-serve and blog to help students identify environmental-themed classes, seminars, and events going on across campus.

Equity in Public Policy (EQUIPP)

The mission of Equity in Public Policy (EQUIPP) is to equip students with the tools needed to advocate for and advance equity as students and policy professionals, as well as in our everyday lives. We use Policy Link's definition of equity to guide our work: just and fair inclusion into a society in which all can participate, prosper, and reach their full potential. EQUIPP aims to create a new generation of policy professionals that understands the way that power, privilege, racism, and oppression intersect with our lives and our work. We do this by grounding ourselves in the knowledge and understanding of the current and historical systems of oppression, through experiential learning, and by hearing from practitioners who are currently advocating for equity.

Food and Agriculture Policy Group

The Food & Agriculture Policy Group seeks to explore how policy can achieve equity, justice, and economic and environmental sustainability within food and agriculture systems. By providing resources, convening conversations, and facilitating collaboration within the UC Berkeley community and beyond, the Food & Agriculture Policy Group examines the intersections of issues such as food justice and equity, the environmental impacts of food systems, the role of food and agriculture subsidies, access to and affordability of nutritious food, and the impact of climate change on food systems.

Housing and Urban Policy Group (HUP)

HUP provides GSPP students interested in Housing and Urban Policy with an avenue for internal and external networking and information sharing. HUP's primary goal is to provide a periodic meeting place, and listserv, for sharing information about relevant courses and events in the field. Speakers will be invited to GSPP to highlight key issues and enhance the learning knowledge within the GSPP community. Future goals

may include partnering with relevant non-profits or public agencies to provide easier connections for future GSPP students for IPA support, internships, and APAs.

International Public Policy Group (IPPG)

IPPG is a student-led group that promotes education and dialogue about policy issues that cross borders. IPPG activities fall into three general categories: event organizing, institutional development, and student support. The group hosts speakers and organizes panels to discuss international policy issues. It works in partnership with GSPP faculty and administration to expand the school's coverage of international policy issues in its core curriculum and electives. It provides information about on-campus resources and opportunities to GSPP students with international interests. It also collaborates with other student groups on campus to do special projects. IPPG is open to all GSPP students. For more information, please visit the IPPG website at: <http://gspp.berkeley.edu/student-life/gssp-student-groups/international-public-policy-group-ippg>.

Berkeley Public Policy Journal (BPPJ)

The Berkeley Public Policy Journal was established with two aims in mind. One was to provide a forum for innovative and

provocative public policy analysis, in particular first-looks at new issues, or new looks at old ones. The second was to experiment with a new mixed-media form of academic publication – part journal, part website, part discussion-board, part live-event. For more information please visit: <https://bppj.berkeley.edu/>.

Politics in Public Policy (PiPP)

This club provides a forum to develop graduate students' understanding of how politics and political climates play a role in shaping public policy.

Queer and Trans Issues in Public Policy (QTIPP).

QTIPP provides a forum for discussion of policies having an impact on gay, lesbian, bisexual, and transgender adults and youth. The group meets monthly for topical discussions and social events and periodically invites guest speakers to the School. The group is open to all GSPP students.

MPAs for Justice and Empowerment

MPAs 4 Justice and Empowerment provide support for the MPA students, specifically those from communities that have been targeted or left out in America. Empower students interested in justice

and belonging by providing the structures 1-year program students need for long-term projects/campaigns/organizing while building community and professional development opportunities for students.

Students of Color in Public Policy (SCIPP)

SCIPP's mission is to ensure the serious consideration of issues of ethnic and racial diversity in policy design both within the School and in society at large. SCIPP provides a support network for students of color at GSPP and a forum for discussion of policy implications for people of color. The group holds conferences and invites guest speakers to the School. It also collaborates with the faculty to diversify the curriculum and promote minority student/faculty retention at GSPP. The group is open to all GSPP students.

Women in Public Policy (WIPP)

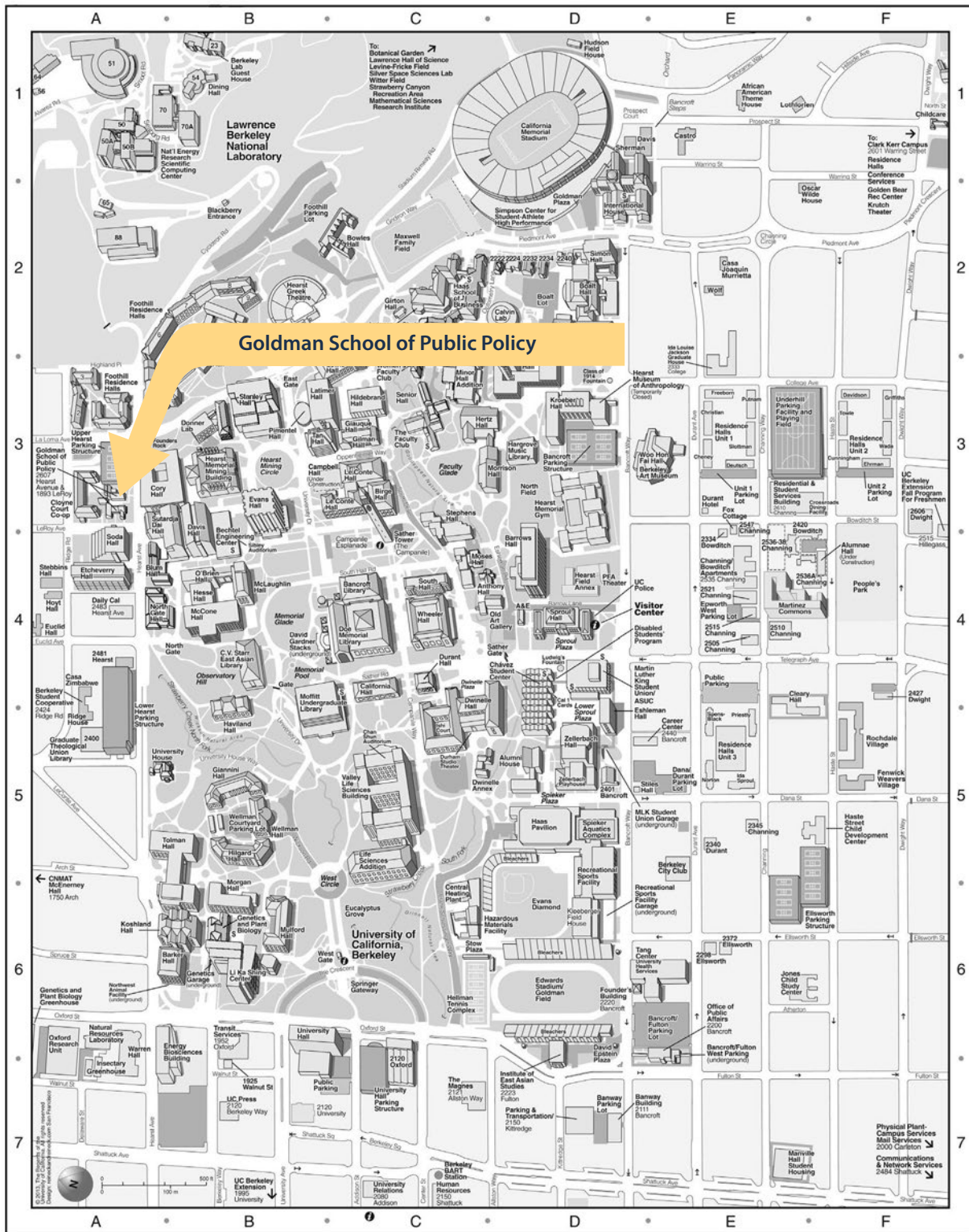
Through panels, guest speakers, discussions and social gatherings, WIPP members provide intellectual and social support to one another and encourage discussion of issues of gender in the context of public policy at GSPP, including curricular and faculty diversity issues. In its first year, the group organized student and alumnae panels to share experiences, expertise, and advice on women's policy and career issues, co-sponsored the west coast premiere of a documentary about welfare, and hosted several social events. WIPP welcomes all GSPP students.



Other Student Organizations

For a full listing of GSPP clubs and other student leadership opportunities, visit:

<http://gspp.berkeley.edu/student-life/gssp-student-groups>



Key

Alumni House, D-5
 Andersen Auditorium (Haas School of Business), C-2
 Anthony Hall, C/D-4
 Architects and Engineers (A&E), D-4
 Bancroft Library y, C-4
 Banway Bldg., D-7
 Barker Hall, A/B-6
 Barrows Hall, D-4
 BART Station, C-7
 Bechtel Engineering Center, B-3/4
 Berkeley Art Museum (Woo Hon Fai Hall), D/E-3
 Birge Hall, C-3
 Blum Hall, A/B-4
 Boat Hall, D-2
 Botanical Garden, C-1
 Brain Imaging Center, B-5

C.V. Starr East Asian Library, B-4
 California Hall, C-4
 California Memorial Stadium, D-1
 Calvin Laboratory, D-2
 Campanile (Sather Tower), C-3
 Campbell Hall, B/C-3/4
 Career Center, D/E-5
 Chan Shun Auditorium (Valley Life Sciences Bldg.), C-5
 Chávez Student Center, D-4
 Cheit Hall, C-2
 Clark Kerr Campus, F-1
 Class of 1914 Fountain, D-3
 CNMAT, A-5/6
 Cory Hall, A/B-3
 Cyclotron Rd., B-2
 Davis Hall, B-3/4
 Doe Memorial Library, C-4

Donner Lab, B-3
 Durant Hall, C-4
 Durham Studio Theatre (Dwinelle Hall), C-5
 Dwinelle Annex, C/D-5
 Dwinelle Hall, C-4/5
 Edwards Stadium, D-6
 Energy Biosciences Building A/B-6/7
 Eshleman Hall, D-4/5
 Etcheverry Hall, A-4
 Evans Diamond, D-6
 Evans Hall, B-3
 Eye Center (Minor Hall Addition), C/D-3
 Eye Center (Tang Center), D/E-6
 Faculty Club, C-3
 Faculty Glade, C-3
 Founders' Rock, A/B-3

Fox Cottage, E-3
 Frank Schlessinger Way, C-6
 Gayley Rd., B/C-2
 Genetics and Plant Biology Bldg, B-6
 Giannini Hall, B-5
 Giauque Hall, C-3
 Gilman Hall, C-3
 Girton Hall, C-2
 Golden Bear Recreation Center, F-2
 Goldman Field, D-6
 Goldman Plaza D-1/2
 Goldman School of Public Policy, A-3
 Greenhouse, A-7
 Grinnell Natural Area, C-6
 Haas Pavilion, D-5
 Haas School of Business, C-2
 Hargrove Music Library, D-3

Haste Street Child Development Center, F-5
 Haviland Hall, B-4/5
 Hazardous Materials Facility, C/D-6
 Hearst Field Annex, D-4
 Hearst Greek Theatre, B-2
 Hearst Memorial Gymnasium, D-3
 Hearst Memorial Mining Bldg, B-3
 Hearst Mining Circle, B-3
 Hearst Museum of Anthropology, D-3
 Heating Plant, Central, C-6
 Hellman Tennis Complex, C-6
 Her tz Hall, C/D-3
 Hesse Hall, B-4
 Hewlett-Packard Auditorium (Soda Hall), A-3/4
 Hildebrand Hall, C-3
 Hilgard Hall, B-5
 Insectar y, A-7
 International House, D-2
 Ishi Cour t, C-5
 Jones Child Study Center, E-6
 Kleeberger Field House, D-6
 Koshland Hall, A/B-6
 Kroeber Hall, D-3
 Krutch Theater, F-2
 Latimer Hall, B/C-3
 Lawrence Berkeley National Laborator y, B-2
 Lawrence Hall of Science, C-1
 LeConte Hall, C-3
 Levine-Fricke Field, C-1
 Lewis Hall, C-2/3
 Life Sciences Addition, C-5
 Lower Sproul Plaza, D-4/5
 Martin Luther King Jr. Student Union, D/E-4
 Mathematical Sciences Research Institute, C-1
 Maxwell Family Field, C-2
 McCone Hall, B-4
 McEnerney Hall, A-5/6
 McLaughlin Hall, B-4
 Memorial Glade and Pool, B-4
 Minor Hall, C-2/3

Minor Hall Addition, C-3
 Moffitt Undergraduate Library, B/C-4
 Morgan Hall, B-5/6
 Morrison Hall, C/D-3
 Moses Hall, C-4
 Mulford Hall, B-6
 Natural Resources Laboratory, A-6
 North Field, D-3
 North Gate, A/B-4
 North Gate Hall, A-4
 Northwest Animal Facility, A/B-6
 O'Brien Hall, B-4
 Observatory Hill, B-4
 Old Art Gallery, C/D-4
 Optometr y Clinic (Eye Center, Minor Hall Addition), C-3
 Optometr y Clinic (Eye Center, Tang Center), D/E-6
 Oxford Research Unit, A-6/7
 Pacific Film Archive (PFA) (Woo Hon Fai Hall), D/E-3
 Pacific Film Archive (PFA) Theater, D-4
 Parking Lots/Structures, A-3, A-4/5, D-3, D/E-6, E-4, E/F-3, E/F-5/6
 Pimentel Hall, B-3
 Pitzer Auditorium (Latimer Hall), C-2/3
 Police, UC (Sproul Hall), D-4
 Recreational Spor ts Facility, D-5/6
 Residence Halls
 Bowles Hall, C-2
 Clark Kerr Campus, F-1
 Cleary Hall, E/F-4/5
 Foothill Residence Halls, A/B-2/3
 Ida Louise Jackson Graduate House, E-2/3
 Martinez Commons E/F-4
 Stern Hall, B-2/3
 Unit 1, E-3
 Unit 2, F-3
 Unit 3, E-5
 Residential and Student Services Bldg., E-3
 Sather Gate, D-4
 Sather Rd., C-4
 Sather Tower (Campanile), C-3/4
 Senior Hall, C-3

Sibley Auditorium (Bechtel Engineering Center), B-4
 Silver Space Sciences Laboratory, C-1
 Simon Hall, D-2
 Simpson Center, C/D-1/2
 Soda Hall, A-3/4
 South Hall, C-4
 Spieker Aquatics Complex, D-5
 Spieker Plaza, D-5
 Springer Gateway, C-6
 Sproul Hall, D-4
 Sproul Plaza, D-4
 Stadium Rim Way, C-1/2
 Stanley Hall, B-3
 Stephens Hall, C-3/4
 Strawberry Canyon Recreation Area, C-1
 Sutardja Dai Hall, A/B-3/4
 Tan Hall, B/C-3
 Tang Center, E/E-6
 Tolman Hall, A/B-5
 UC Berkeley Extension, B-7
 Underhill Playing Field, E-3
 University Dr., B-5
 University Hall, B-6
 University Health Services, D/E-6
 University House, A/B-5
 University of California Press (UC Press), B-7
 Valley Life Sciences Bldg., C-5
 Visitor Center (Sproul Hall), D/E-4
 Warren Hall, A-6/7
 Wellman Hall, B-5
 West Circle, B/C-5/6
 West Gate, B/C-6
 Wheeler Hall, C-4
 Wickson Natural Area, B-5
 Witter Field, C-1
 Women's Faculty Club, C-3
 Wurster Hall, D-2/3
 Zellerbach Hall, D-5
 Zellerbach Playhouse, D-5

U.C. Berkeley: Academic Calendar 2022-2023



Fall Semester 2022

Fall Semester Begins	August 17	Wednesday
Instruction Begins	August 24	Wednesday
Academic and Administrative Holiday	September 5	Monday
Academic and Administrative Holiday	November 11	Friday
Non-Instructional Day	November 23	Wednesday
Academic and Administrative Holiday	November 24-25	Thursday-Friday
Formal Classes End	December 2	Friday
Reading/Review/Recitation Week	December 5-9	Monday-Friday
Last Day of Instruction	December 9	Friday
Final Examinations	December 12-16	Monday-Friday
Fall Semester Ends	December 16	Friday
Academic and Administrative Holiday	Dec 23 & Dec 26	Friday & Monday

Spring Semester 2023

Spring Semester Begins	January 11	Tuesday
Academic and Administrative Holiday	January 17	Monday
Instruction Begins	January 18	Tuesday
Academic and Administrative Holiday	February 21	Monday
Spring Recess	March 21-25	Monday-Friday
Cal Day	(TBD)	(TBD)
Formal Classes End	April 29	Friday
Reading/Review/Recitation Week	May 2-May 6	Monday-Friday
Last Day of Instruction	May 6	Friday
Final Examinations	May 9-13	Monday-Friday
Spring Semester Ends	May 13	Friday
Academic and Administrative Holiday	May 30	Monday

Berkeley Public Policy

The Goldman School

How a Better Future Gets Made

2022-2023 PROGRAM BULLETIN



2607 Hearst Avenue #7320

Berkeley, CA 94720-7320

510.642.4670

gspp.berkeley.edu

The University of California, in accordance with applicable federal and state law and the university's nondiscrimination policies, does not discriminate on the basis of race, color, national origin, religion, sex (including sexual harassment), gender identity, pregnancy/childbirth and medical conditions related thereto, disability, age, medical condition (cancer-related), ancestry, marital status, citizenship, sexual orientation, or status as a Vietnam-era veteran or special disabled veteran. This nondiscrimination policy covers student admission, access, and treatment in university programs and activities. It also covers faculty (Senate and non-Senate) and staff in their employment. Inquiries regarding racial and sexual harassment may be directed to the Title IX/VI Compliance Officer by phone at (510) 643-7895 or email (tixco@berkeley.edu). The appropriate resource for inquiries regarding other types of discrimination may be identified through the website of Equity Standards and Compliance (<http://equity.chance.berkeley.edu>).