

2021

.....
FACTS
BROCHURE

PEPPERDINE

MISSION STATEMENT

Pepperdine is a Christian university committed to the highest standards of academic excellence and Christian values, where students are strengthened for lives of purpose, service, and leadership.

CONTENTS

Beginnings and Benefactors	2
A Pepperdine Timeline	4
Schools of Pepperdine	6
Study Abroad.....	16
Athletics	18
Spiritual Life	20
University Libraries.....	21
Lisa Smith Wengler Center for the Arts.....	22
Social Event and Advancement Calendar	24
Community Safety	25
Recent Initiatives	26
Student Information	28
General Facts	29
Alumni	30
Financial Information	31
Executive Leadership	32
Contact Information.....	Inside Back Cover



WELCOME TO PEPPERDINE UNIVERSITY!



Pepperdine University is an independent, private Christian university enrolling more than 9,500 students in its five colleges and schools. We have drawn students from every state of the union and from more than 80 countries worldwide. Pepperdine is widely regarded to be among the nation's top universities, known for its high academic standards, its nationally acclaimed Division I athletics program, and its commitment to serving the needs of each and every Pepperdine student.

Our world-renowned, 830-acre Malibu campus is home to our undergraduate school, Seaver College; our Caruso School of Law and School of Public Policy; and programs of the Graziadio Business School and the Graduate School of Education and Psychology. Additionally, our graduate campuses, located throughout Southern California, afford convenient access to mid-career adults pursuing advanced degrees in business, education, and psychology and bachelor's degrees in business.

The pages of this guide, reflecting specific data from the 2020–21 academic year unless otherwise noted, will introduce you to some of what makes Pepperdine unique. Specific events referenced herein were virtual in compliance with requirements determined by the Los Angeles County Department of Public Health.

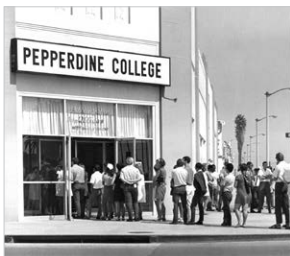
BEGINNINGS AND BENEFACTORS



*George Pepperdine
(1886–1962)*

In February 1937, against the backdrop of despair and pessimism of the Great Depression, a man named George Pepperdine decided to do a hopeful thing in unhopeful times: endow, erect, dedicate, and accredit a Christian liberal arts college in the city of Los Angeles. Remarkably, led by Mr. Pepperdine's commitment

and passion, only seven months later on September 21, students entered classes on a newly built campus, and by April 6, 1938, George Pepperdine College was fully accredited by the Northwest Association.



As the young college grew over the decades, it caught the attention of entrepreneur, lawyer, and inventor Frank R. Seaver, who mentioned Pepperdine in his will. However, it was his widow, Blanche E. Seaver, who came to wholly embrace the Pepperdine mission. She extended the Seaver family legacy through generous gifts that enabled the school to expand into Malibu in



*Frank R. Seaver (1883–1964)
Blanche E. Seaver (1891–1994)*

1972. In 1975 the Malibu campus was named the Frank R. Seaver College, becoming the flagship undergraduate school of the University.

Pepperdine's graduate business school and its law school were both established in 1969. The former, now the Graziadio Business School, was named in 1996, when George L. Graziadio, Jr., Imperial Bank cofounder and real estate entrepreneur, "adopted" it as his fourth child and endowed it with both his gifts and his name. In the spirit of its namesake, the Graziadio School provides business education that is entrepreneurial in spirit, ethical in focus, and global in orientation.



*George L. Graziadio
(1911–2002)*

The law school was named the Caruso School of Law in 2019, the year of its 50th anniversary, in honor of a historic gift from alumnus Rick J. Caruso (JD '83) and his wife, Tina. A real estate entrepreneur



*Rick J. Caruso (JD '83)
(1959–Present)*

like Graziadio, Caruso has a passion for educational philanthropy. Designed to both strengthen the school's academic programming and enable talented students to attend the school who would not otherwise have the means to do so, the Caruso gift will have a significant impact on the school's students in the years to come.



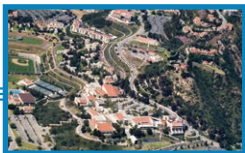
Pepperdine University has been ranked #19 of the Colleges with the Most Beautiful Campuses by the Princeton Review (2021).



1937 George Pepperdine College is founded by entrepreneur and businessman George Pepperdine, founder of Western Auto Supply Company. The original Los Angeles campus is located at the intersection of 79th Street and Vermont Avenue.



1938 George Pepperdine College holds its first commencement ceremony with four graduates: Malcom Hinckley, Carmen Landrum, Paul Tucker, and Richard Gibson.



1975 With a historic gift from Blanche E. Seaver, the newly endowed Frank R. Seaver College of Letters, Arts, and Sciences becomes the flagship undergraduate school of Pepperdine.



1972 The Malibu campus opens its doors to welcome more than 850 new students, one of the largest first-year classes ever.



1982 Following the founding of the School of Education in 1971, Pepperdine merges the school with the psychology division from the Los Angeles campus to form the Graduate School of Education and Psychology.



1996 Businessman and entrepreneur George L. Graziadio endows the business school, which is renamed in his honor.



1963 Pepperdine launches the first of its renowned international programs in Heidelberg, Germany.



1968 Plans are announced for the construction of a new campus in Malibu following a gift from the Adamson family of a remarkable 138 acres of undeveloped ranch land.



1971 Following the expansion of new schools, George Pepperdine College is announced as Pepperdine University.



1969 Pepperdine College reorganizes the department of business into the School of Business and accepts an offer to acquire the Orange University College of Law to establish the School of Law.



1997 Pepperdine establishes its newest graduate school, the School of Public Policy, which quickly becomes one of the most research-oriented schools at the University.



2003 The 50.4-acre Drescher Graduate campus opens, representing the largest expansion of the Malibu Campus since its inauguration in 1972.

2019 The law school is renamed the Caruso School of Law to commemorate a significant gift from alumnus and real estate developer Rick J. Caruso (JD '83).



SEAVER COLLEGE

Seaver College is the University's residential college of letters, arts, and sciences, providing rich opportunities for intellectual and spiritual exploration within a diverse community.

Dean: Michael E. Feltner, PhD

Founded: 1972—originally known as the “Malibu Campus,” named Frank R. Seaver College in 1975 after the late husband of benefactor Blanche E. Seaver

School Organization: eight academic divisions

- Business Administration
- Communication
- Fine Arts
- Humanities and Teacher Education
- International Studies and Languages
- Natural Science
- Religion and Philosophy
- Social Science

Degrees Offered: BA (34 majors), BS (11 majors), MA (2 disciplines), MS (1 discipline), MDiv, MFA (1 discipline) (fall 2021)

Certificate Programs: Nutritional Science (postgrad), Conflict Management, Global Fellows

Minors: 46 fields of study (fall 2021)

Top 6 Majors: business administration, psychology, biology, economics, sports medicine, political science

Special Programs: W. David Baird Distinguished Lecture Series, Center for Teaching Excellence, Great Books Colloquium, Intercultural Affairs, Seaver 200, Social Action and Justice Colloquium, Student-Led Ministries

Student Support: Counseling Center, Office of Student Accessibility, Resilience-Informed Skills Education Program, Spiritual Life Advisors Program, Student Care Team, Student Health Center, Student Success Center



Enrollment Stats: 3,356 total, male/female ratio: 1:1.4, student/faculty ratio: 13:1, entering class GPA: 3.69

Top 6 Home States (US Resident Students): California 54.2%, Texas 8.8%, Washington 3.2%, Colorado 3.1%, Arizona 2.3%, Illinois 2.3%

Top 6 Countries of Origin (International Students): China + Hong Kong 45.9%, Indonesia 6.5%, Brazil 4.5%, Canada 4.2%, Thailand 3.1%, South Korea 2.8%

Recent Recognitions:

- ▶ *U.S. News & World Report:* #49 National Universities, #18 Best Undergraduate Teaching, #25 Best Colleges for Veterans, #46 Best Value Schools, #50 Most Innovative
- ▶ *Niche.com:* Overall grade = A, #13 Best Christian Colleges, #29 Best Colleges for Communications

Winners of Competitive Fellowships:

Fulbright Scholarship	72
Gilman International	17
Rotary Scholarship	9
NSF Graduate Research Fellowship	8
Rhodes Finalist	7
Other	55

Publications: *Currents* (student magazine); *Global Tides* (student online research journal); the *Graphic* (student newspaper)

Tel: 310.506.4392

Website: seaver.pepperdine.edu

CARUSO SCHOOL OF LAW

Pepperdine Caruso Law provides a superior legal education marked by excellence, Christian values, and rigorous legal training.

Dean: Paul L. Caron, LL.M.

Founded: 1964—originally the Orange University College of Law in Santa Ana, California; acquired in 1969 and named for benefactor Rick J. Caruso (JD '83) in 2019

Accreditation: approved by the American Bar Association; Committee of Bar Examiners, State Bar of California; member of the Association of American Law Schools and Order of the Coif

Degrees Offered:

- JD (2-year accelerated, 3-year, and extended program)
- LL.M. (with seven specializations available, e.g., dispute resolution; entertainment, media, and sports; international commercial law and arbitration; and US law and dispute resolution)
- MDR (Master of Dispute Resolution)
- MLS (Master of Legal Studies)

Certificate Programs: Criminal Legal Practice; Dispute Resolution; Entertainment, Media, and Sports Law; International and Comparative Law; Law and Entrepreneurship

Joint-Degree Programs: JD/MBA, JD/MDiv, JD/MDR, JD/MPP, MDR/MBA, MDR/MPP

Institutes and Centers: Byrne Judicial Clerkship Institute; Nootbaar Institute on Law, Religion, and Ethics; Palmer Center for Entrepreneurship and the Law; Parris Institute for Professional Excellence; Straus Institute for Dispute Resolution; Sudreau Global Justice Institute

Clinical Programs: Community Justice Clinic, Disaster Relief Clinic, Fair Employment and Housing Mediation Clinic, Faith and Family Mediation Clinic, Legal Aid Clinic, Low Income Taxpayer Clinic, Mediation Clinic,



Ninth Circuit Appellate Advocacy Clinic, Restoration and Justice Clinic, Startup Law Clinic

Recent Recognitions:

- ▶ *U.S. News & World Report*: #46 for Best Law Schools, #3 dispute resolution program (Straus Institute)
- ▶ Princeton Review: #2 for Best Professors: Accessibility, #10 for Best Quality of Life
- ▶ National Jurist's *preLaw* magazine: #14 in Practical Training

Special Programs: Mediating the Litigated Case Program; Pepperdine Law Review Symposium; Professional Skills Program; Washington, DC Externship Program

Enrollment Stats: 1,014 total, male/female ratio: 1:1.49, student/faculty ratio: 15:1

JD Enrollment Stats: 517 total, student/faculty ratio: approximately 6.5:1, entering-class medians: LSAT 162, GPA 3.68; first-time California bar pass rate 79%

Top 6 Home States (US-Resident Students):

California 61.7%, Texas 6.0%, Arizona 2.9%, Illinois 2.4%, Florida 2.4%, Washington 2.3%

Journals: *Journal of the National Association of Administrative Law Judiciary*; *Pepperdine Dispute Resolution Law Journal*; *Pepperdine Journal of Business, Entrepreneurship, and the Law*; *Pepperdine Law Review*

Tel: 310.506.4611

Website: law.pepperdine.edu

GRAZIADIO BUSINESS SCHOOL

The Graziadio Business School is anchored in the core values of Pepperdine and is dedicated to developing Best for the World Leaders that drive meaningful, positive change.

Dean: Deryck J. van Rensburg, DBA

Founded: 1969—named for benefactor George L. Graziadio, Jr., in 1996

Accreditation: AACSB International (Association to Advance Collegiate Schools of Business)

Degrees Offered:

- DBA (Executive Doctor of Business Administration)
- MBA (Master of Business Administration)
 - Executive MBA
 - Full-Time MBA*
 - International MBA (1 term abroad)*
 - Online MBA
 - Part-Time (Fully Employed) MBA
 - Presidents and Key Executives (PKE) MBA
- MS in Applied Finance*
- MS in Business*
- MS in Business Analytics
- MS in Global Business*
- MS in Human Resources
- MS in Management and Leadership
- MS in Organization Development
- MS in Real Estate*
- BSM (Bachelor of Science in Management)

**Offered only in full-time, residential format. All others are designed for working professionals variously in evening, weekend, hybrid, or online schedules unless noted.*

Joint-Degree Programs: BS/MBA, BSM/MBA, MBA/JD, MBA/MDR, MBA/MPP

Certificate Programs: offerings in 11 areas of business specialty study



Centers: Center for Applied Research, Center for Teaching and Learning Excellence, Center for Women in Leadership

Special Programs: Future of Healthcare Symposium; Most Fundable Companies Showcase; Socially, Environmentally, and Ethically Responsible (SEER) Symposium; Women in Leadership Conference

Enrollment Stats: 2,006 total, male/female ratio: 1:1.04, student/faculty ratio: 13:1

Top 5 Countries of Origin (International Students): China 82.2%, Kuwait 3.1%, Indonesia 2.5%, Taiwan, Republic of China 1.6%, Canada 1.2%

Recent Recognitions:

- *U.S. News & World Report:* #73 Best Part-Time MBA, #68 Best Full-Time MBA, #26 Best Online MBA, #53 Best Online MS programs
- *Princeton Review:* #11 Online MBA, #9 Most Competitive Students Full-Time MBA
- *Bloomberg Businessweek:* #33 for Entrepreneurship, #63 Best Business Schools
- *Forbes:* #61 Best Business Schools

Publications and Research:

Graziadio Business Review (online journal)

Tel: 310.568.5500

Website: bschool.pepperdine.edu

GRADUATE SCHOOL OF EDUCATION AND PSYCHOLOGY (GSEP)

The Graduate School of Education and Psychology provides innovative academic programs dedicated to building scholar-practitioners through hands-on learning.

Dean: Helen Easterling Williams, EdD

Founded: 1971—as School of Education, 1981—Psychology Division added, 1982—renamed Graduate School of Education and Psychology

First Offerings of Graduate Degrees:

Psychology—1951, Education—1960

Accreditation: specific programs of GSEP accredited by the California Commission on Teacher Credentialing. PsyD program accredited by the American Psychological Association

Degrees Offered:

*Education:**

- PhD in Global Leadership and Change
- EdD in Educational Leadership, Administration, and Policy
- EdD in Learning Technologies
- EdD in Organizational Leadership
- MA in Social Entrepreneurship and Change
- MA in Teaching
- MA in Teaching English to Speakers of Other Languages (TESOL)
- MS in Leadership in Higher Education
- MS in Leadership in Pre-K to 12 Education
- MS in Learning Design and Technology
- MS in Organizational Leadership and Learning

**Some programs offered online; all programs offered in partially online and partially in-person formats. EdD credits may be applied toward PhD, and 9 MA TESOL or MS credits toward EdD or PhD.*



Psychology:

- PsyD in Clinical Psychology
- MA in Clinical Psychology: Emphasis in Marriage and Family Therapy (MFT) (*day, evening, online formats*); Emphasis in MFT with Latinas/os
- MA in Psychology (*evening, online formats*)
- MS in Applied Behavior Analysis (*evening, online formats*)

Education Credentials Programs: offerings in single- and multiple-subject teaching

Community Counseling Clinics: offering intern-provided clinical care in Irvine and West L.A.

Special Programs: Aliento, The Center for Latinx Communities; counseling at Hope Gardens Family Center and Village of Hope; Culture and Trauma Research Lab; Diversity Council; Foster Grandparent Program; PRYDE; Union Rescue Mission Mental Health Clinic (low- and no-cost counseling services)

Enrollment Stats: 3,104 total, 665 education, 2,439 psychology, male/female ratio: 1:4.14, student/faculty ratio: 13:1

Honor Societies: Kappa Delta Phi (EdD in Educational Leadership, Administration, and Policy), Psi Chi (psychology)

Recent Recognitions: onlinecollegeplan.com: #8 among doctoral programs in partially online format

Tel: 310.568.5600

Website: gsep.pepperdine.edu

SCHOOL OF PUBLIC POLICY (SPP)

The School of Public Policy provides students a public policy education rooted firmly in history, philosophy, and economics; guided by moral and ethical principles captured in the lives of great leaders; and encompassing the full range of governmental, community-based, and free-market approaches to public policy issues.

Dean: Pete N. Peterson (MPP '07)

Founded: 1997—originally established as the Institute for Public Policy in 1996

Affiliations: Association of Professional Schools of International Affairs, Association for Public Policy Analysis and Management, National Association of Schools of Public Affairs and Administration, Public Policy and International Affairs Fellowship Program

Degrees Offered: MPP (Master of Public Policy) (specializations: American policy and politics, applied economic policy, international relations and national security, public policy and dispute resolution, state and local policy), MPPL (Master of Public Policy and Leadership) (spring 2022, *online only*)

Joint-Degree Programs: MPP/JD, MPP/MBA, MPP/MDR

Special Academic/Professional Programs: Washington, DC Policy Scholars Program (4-week courses); Certificate in Advanced Public Engagement for Local Government, Certificate in Leading Smart Communities

Internship: Required specialization-related internship in government, international, nonprofit, or private sector

Enrollment Stats: 74 total, male/female ratio: 1:1.2, student/faculty ratio: 11:1

Student Organizations: Association of Environmental Professionals, Christianity and Public Policy, Conservatives of Public Policy, International City/County Management Association Student Chapter, Pi Alpha Alpha, Politics in Public Policy, Women in Public Policy



Initiatives:

The American Project: promotes the reimagination of the future of conservatism

Davenport Institute for Public Engagement and Civic Leadership: offers seminars; sponsors conferences; works with governments, nonprofits, and residents to promote civic involvement skills

Education Policy and Impact: prepares policy leaders as it engages current policy makers in civil discussions about the future of America's education system

Homeland Security Advisory Council at the School of Public Policy (HSAC@SPP): maximizes community resilience by advancing technological innovation, creates opportunities for cross-sector collaboration, prepares leaders in crisis management and disaster response

Viewpoint Diversity: promotes diversity of expression in American higher education

Visiting Professors:

Kevin Faulconor, Visiting Professor of Community Leadership and Government Innovation

Robert George, Ronald Reagan Honorary Distinguished Professor of Public Policy

Publications: *Dean's Report*, *Pepperdine Policy Review* (student journal)

Tel: 310.506.7490

Website: publicpolicy.pepperdine.edu

STUDY ABROAD

Seaver College, International Programs Office:

The Institute of International Education has ranked Seaver College #3 in the nation for highest percentage of undergraduate students who study abroad (2020 report).

Academic Year and Summer GE Programs:

Pepperdine has permanent educational and residential facilities serving students in the following locations:

- Buenos Aires, Argentina
- Florence, Italy
- Heidelberg, Germany
- Lausanne, Switzerland
- London, United Kingdom
- Washington, DC

Summer Faculty-Led and Specialty Programs:

Pepperdine offers campus-based specialty programs and faculty-led programs to locations globally. Offerings vary by year.

Faculty-Led Programs:

East Africa, Edinburgh Theatre, Fiji Mission at Natuvu Creek, Madrid

Specialty Programs:

Buenos Aires Upper Division Spanish; Heidelberg Music; Lausanne Intensive French; London Internship or Religion; Washington, DC

Website: seaver.pepperdine.edu/academics/international-programs





Caruso School of Law: Augsburg University (Germany) exchange program, Brenden Mann internship in Israel, London program, Sudreau Global Justice Institute program (initiatives conducted in Africa and South America), Straus Institute international study tour to Geneva/London/Paris

Website: law.pepperdine.edu/experiential-learning/global-programs

Graziadio Business School: One-week global business intensives have included Cape Town, South Africa; Oxford, United Kingdom; Paris, France; Sydney, Australia; Tokyo, Japan; and many other destinations. Trimester exchange programs have been offered at 30 partner universities across five continents.

Website: bschool.pepperdine.edu/global-programs

Graduate School of Education and Psychology: An international policy trip is required for all doctoral students in the Education Division; destinations have included Belize, China, and Dubai/India.

Website: gsep.pepperdine.edu/degrees-programs/doctorate-education.htm

School of Public Policy: Master of public policy students may participate in international summer internships.

Website: publicpolicy.pepperdine.edu/master-public-policy

ATHLETICS

School Team Name: Waves

Athletic Mascot: Willie the Wave

Athletics Director: Steven T. Potts (JD '82)

NCAA Division I Teams:

Men's Sports

Baseball

Basketball

Cross Country

Golf

Indoor Volleyball

Tennis

Track

Water Polo

Women's Sports

Basketball

Beach Volleyball

Cross Country

Golf

Indoor Volleyball

Soccer

Swimming and Diving

Tennis

Track

Men's Baseball:

1992 NCAA champions

27 NCAA tournament appearances

25 conference championships

Men's Basketball:

13 NCAA tournament appearances

19 conference championships

Women's Basketball:

4 NCAA tournament appearances

7 conference championships

Women's Beach Volleyball:

2012, 2014 AVCA national champions

4 NCAA tournament appearances

3 conference championships

Men's Golf:

1997, 2021 NCAA champions

11 NCAA championship appearances

21 conference championships

Women's Golf:

12 NCAA championship appearances

18 conference championships



Men's Indoor Volleyball:

1978, 1985, 1986, 1992, 2005 NCAA champions

15 NCAA tournament appearances

15 conference championships

Women's Indoor Volleyball:

23 NCAA tournament appearances

11 conference championships

Women's Soccer:

11 NCAA tournament appearances

4 conference championships

Men's Tennis:

2006 NCAA champions

1952 NAIA champions

33 NCAA tournament appearances

42 conference championships

Women's Tennis:

35 NCAA tournament appearances

37 conference championships

Men's Water Polo:

1997 NCAA champions

13 NCAA tournament appearances

12 conference championships

**Olympic History:**

Alumni Olympians (competitor or coach): 53

Medals: Gold 7, Silver 8, Bronze 4

Gold Medalists: Dain Blanton, Craig Buck (2),

Bob Ctvrtlik, Sean Rooney, Jeff Stork, Troy Tanner

NCAA Student-Athlete Graduation Success:

Pepperdine NCAA average

92% 90%

Tel: 310.506.4150

Website: pepperdinewaves.com

SPIRITUAL LIFE

Christian Scholarship:

- Center for Faith and Learning—resources for faculty to integrate faith and learning into their teaching
- Churches of Christ Heritage Center—a Stone-Campbell Restoration Movement research center
- Frank Pack and William Green Lectures—annual series presenting distinguished Christian thinkers
- Glazer Institute for Jewish Studies—for greater understanding of Jewish religion and culture within Christian academia
- Harbor—a weeklong conference of Bible study in the Church of Christ tradition
- Nootbaar Institute on Law, Religion, and Ethics—hosts conferences on law and faith
- Seaver College—undergraduate and graduate degrees offered in preparation for professional ministry

Worship and Discipleship:

- Boone Center for the Family—resources and outreach to strengthen relationships and families
- Office of the Chaplain—spiritual support specifically for students, faculty, and staff
- Seaver 200—exploration of faith gatherings of first-year and sophomore residential undergraduates
- Student-Led Ministries—various alternative chapel opportunities for worship and study led by students
- University Church of Christ—on-campus ministry serving the Malibu community



UNIVERSITY LIBRARIES

Pepperdine Libraries provides a wealth of resources and personalized, expert service to support the diverse and changing needs of our learning community.

Dean of Libraries: Mark S. Roosa, PhD

Locations: Malibu (three locations); Calabasas; Irvine; West L.A.; Washington, DC; and five international locations at our campuses in Buenos Aires, Florence, Heidelberg, Lausanne, and London

Resources:

- Access to more than 1.4 million items via our catalog, 3 billion available via interlibrary loan
- Access to more than 100 electronic databases, with more than 65,000 journals and 500,000 e-books
- Digital Collections: 40,000 items, including photographs, documents, films, and recordings
- Special Collections and University Archives: Churches of Christ Heritage Center, Historic Surfboard Collection, Malibu Historical Collection, rare books
- Pepperdine Libraries Digital Commons (electronic press for Pepperdine scholarship)

Services:

- Librarians available via chat, email, phone, and in person
- Tutoring for writing and speech and fully equipped workstations in the Academic Center for Excellence
- A makerspace outfitted with 3D printers, virtual reality equipment, and more
- Lectures, concerts, workshops, and exhibitions
- Digital Learning Lab for information literacy classes

Tel: 310.506.7273

Website: library.pepperdine.edu

LISA SMITH WENGLER CENTER FOR THE ARTS

The Lisa Smith Wengler Center for the Arts (CFA) presents a diverse program of performances and exhibitions. Each year, CFA serves 50,000 patrons and participants through performances, rehearsals, and art exhibits in its four facilities: **Smothers Theatre** (seats 450), **Raitt Recital Hall** (118), **Helen E. Lindhurst Theatre** (100), and the **Frederick R. Weisman Museum of Art**. Headliners have included Rosanne Cash and Sheena Easton, in addition to a year-round program of recitals, dance, world music, and shows for families.

Frederick R. Weisman Museum of Art:

The Weisman Museum offers changing exhibitions of contemporary and historic art by artists ranging from Larry Bell to Andy Warhol.

ARTSReach Program:

Supported by the Center for the Arts Guild, this program provides free performances and museum tours to thousands of schoolchildren from throughout Southern California.

Master Classes:

World-class artists connect with Pepperdine University students for hands-on instruction in music, theatre, and dance. Recent master classes include critically acclaimed stage and screen actress Lea Salonga and Tony Award-winning Broadway stars Alan H. Green and Jessica Hendy.

Jessica Hibler ('21), Untitled, 2021, watercolor, Hues of Isolation, Pepperdine Studio Arts Senior Thesis Exhibition 2021.





Center for the Arts Highlights:

- 50,000 patrons served
- 1,800 artists, technicians, and onstage participants each year
- 1,500 ZIP codes served
- 7,000 viewings of performances, exhibitions, and master classes by Pepperdine University students
- 5,200+ ARTSReach performance attendees

Recent Professional Presentation Highlights:

- Ailey II
- Cirque FLIP Fabrique
- Burton Cummings
- Tommy Emmanuel
- Michael Feinstein
- Chris Hillman
- Jessica Lang Dance Company
- Darlene Love
- Jake Shimabukuro
- Steep Canyon Rangers
- Ruben Studdard
- Versa Style Dance Company

Recent Museum Highlights:

- *Squeak Carnwath: How the Mind Works*
- *It's All Black and White*
- *Rodin and Women: Muses, Sirens, Lovers*

Tel: 310.506.4522

Website: arts.pepperdine.edu

SOCIAL EVENT AND ADVANCEMENT CALENDAR

Fall:

Athletics Hall of Fame Ceremony
Founder's Day
Luciana and Daniel Forge
Fall Musical
SavvyChic (fashion show)
Wave Classic Golf Tournament
Waves Weekend (homecoming)

Winter:

Center for the Arts Guild Holiday
Boutique
Dance in Flight
Graziadio Commencement (winter)
Flora L. Thornton Opera Program
WCC Basketball Tournament (Las Vegas)



*WCC Basketball
Tournament 2021*

Spring:

Commencements (all five schools)
George Awards
Give2Pepp (annual giving day)
Grad Fest
Harbor
Pepperdine Associates Dinner
Pepperdine Law Dinner (moot court awards)
Songfest
William French Smith Memorial Lectures
Youth Citizenship Seminar

Summer:

Graziadio Commencement (summer)

University Advancement:

General: 310.506.4898
Pepperdine Associates: 310.506.6335
The Pepperdine Fund: 310.506.4579

COMMUNITY SAFETY

Pepperdine is committed to providing a safe and secure environment for all students and community members.

Campus Security:

Department of Public Safety (DPS) officers receive emergency response training including CPR, first aid, and fire response. The Malibu campus entrances are monitored 24 hours a day to ensure vehicles and pedestrians are authorized to access campus. DPS officers provide security escorts 24 hours a day, upon request, and transportation for students with temporary medical conditions impacting mobility. They also provide services such as jump starts and vehicle lockouts.

Emergency Preparedness and Response:

The Office of Emergency Services, the Office of Insurance and Risk, DPS, and the University's Emergency Operations Committee (EOC), in cooperation with many other departments, work to ensure that Pepperdine upholds the highest standards in emergency preparedness.

During emergencies faculty, students, and staff are informed by the University's emergency mass notification system. The LiveSafe Mobile App is another tool that provides an immediate path to communicating safety information to 911 or DPS. Community members may also go to the University Emergency Information page, emergency.pepperdine.edu, for EOC updates and decisions.

General Public Safety Office Tel:

310.506.4700

Website: pepperdine.edu/publicsafety

Report an Emergency Tel: 911, then 310.506.4441

Website: emergency.pepperdine.edu



RECENT INITIATIVES

Diversity and Inclusion:

- ▶ A series of five special events to inspire women and male allies was hosted by the GSEP Center for Global Partnership and Learning to commemorate International Women's Day (spring 2021).
- ▶ The University's first vice president for community belonging and chief diversity officer, as well as its first assistant vice president for community belonging, were hired to advance its commitment to building a culture of belonging (winter 2021).
- ▶ The Caruso School of Law held its inaugural Belonging Awards, celebrating community members who demonstrated their dedication to furthering diversity (winter 2021).
- ▶ Seaver College created a new Student Fellowship for Equity and Social Justice to support two rising seniors in pursuit of equity and social justice projects (winter 2021).
- ▶ Student-veterans launched the Pepperdine Veterans Council, a committee focused on support and inclusivity of student-veterans (fall 2020).
- ▶ The Student Government Association of Seaver College formed the Diversity, Equity, and Inclusion Council to further undergraduates' sense of belonging (fall 2020).





Bernard Kinsey (MBA '73) shared his insights and images from the Kinsey African Art & History Collection with the Pepperdine community during a President's Speaker Series event in February 2021.

Conferences and Symposia:

- Women in Leadership: Navigating Through Power Structures, Personal Challenges, and a Pandemic—pioneering women leaders offered advice on developing opportunities for professional growth and expanding professional networks (spring 2021)
- Pepperdine Law Review Symposium—a series of speakers and panelists shared their insights on contentious issues in the field of music copyright law (winter 2021)
- The ninth annual Socially, Environmentally, and Ethically Responsible (SEER) Symposium—speakers focused on how to put values to work in the business world (winter 2021)

University News Sources:

- *Newsroom* (online)—University news stories as well as curated stories from outside media
pepperdine.edu/newsroom
- *President's Report* (online)—corporate information, important events of the year, mission, and vision
pepperdine.edu/annualreports
- *Pepperdine Magazine*—triannual magazine, general interest to all University constituencies
pepperdine.edu/magazine

STUDENT INFORMATION

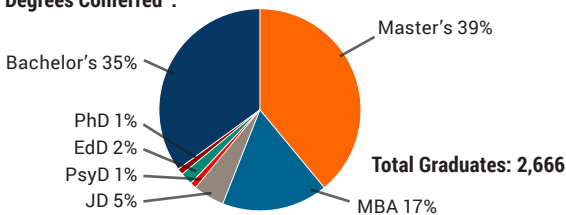
Student Charges*: Summary of tuition charges for the 2020–2021 academic year

	\$ per semester
Seaver College	28,875
Caruso School of Law	29,640
School of Public Policy	20,760
Graziadio Business School**	\$ per trimester
Full-time MBA	26,360
Executive MBA	28,175
GSEP	\$ per unit
Edu Master's	1,320
EdD	1,665
PhD Global Leadership/Change	1,975
Psy Master's (non-Malibu)	1,320
Psy Master's (Malibu and online)	1,645
PsyD	1,665

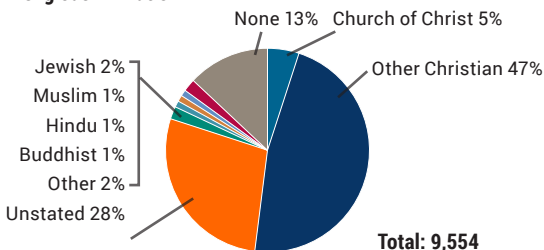
*Source: academic catalogs 2020

**BS and fully employed master's programs charge per unit, other master's, PKE, and DBA programs charge a flat rate per trimester

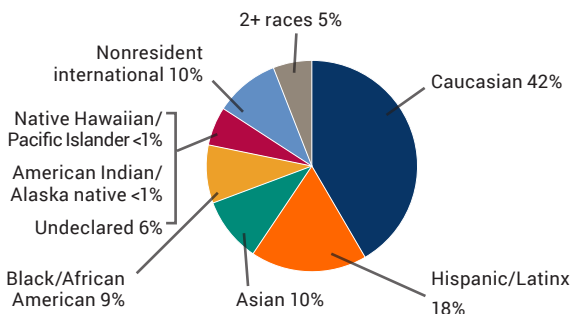
Degrees Conferred†:



Religious Affiliation†:



Ethnic Diversity†:



†Source: OIE Factbook 2020

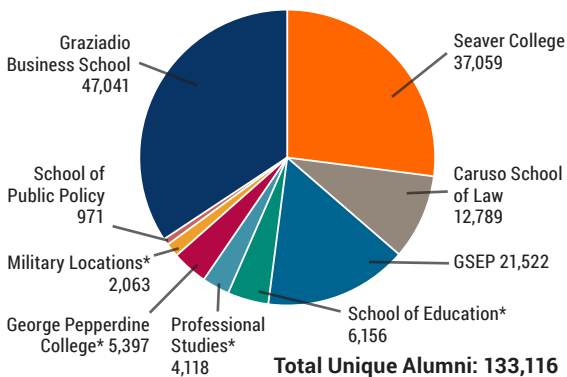
Total: 9,554

GENERAL FACTS

- Motto: “Freely ye received, freely give.” (Matt. 10:8)
- School colors: blue and orange
- Total students in five colleges and schools: 9,554
- VA program enrollment (2020): 419
- Full-time teaching faculty (fall 2020): 391
- Percentage of full-time teaching faculty holding doctoral or terminal degrees: 85%
- Full-time staff (fall 2020): 1,114
- Percentage of Pepperdine students receiving financial assistance: undergraduate 92.3%, graduate 85.3%
- Resident Malibu campus population: 2,614 total, 2,364 students, 250 faculty and staff (fall 2019)
- Pepperdine University is accredited by the WASC Senior College and University Commission, 985 Atlantic Avenue, #100, Alameda, CA 94501, 510.748.9001

ALUMNI

Alumni by College/School:



as of 6/7/2021

*Historic schools of Pepperdine

Alumni Engagement Organizations: Alumni advisory boards, Alumni Leadership Council, Alumni Regional Chapter Leaders, Caruso School of Law Dean's Council, Caruso School of Law Preceptor Program, Graziadio Alumni Network Councils, GSEP Alumni Network, Pepperdine Alumni Affairs, Pepperdine Entertainment Network, Pepperdine Estate Planning Network (PEPNET), Student Alumni Organization (SAO)

Alumni News and Info Venues: alumni.pepperdine.edu, Caruso School of Law Monthly Newsletter, Caruso School of Law *Surf Report*, Graziadio Alumni Annual Report, Graziadio Alumni Blog, Graziadio Alumni Network, GSEP Professionals Newsletter, Pepperdine Alumni Affairs newsletters, *Pepperdine Magazine*, *Promenade* (Pepperdine College), School of Public Policy *Dean's Report*

Digital Pepperdine Alumni Network: PeppConnect

Tel: 310.506.6190

Website: pepperdine.edu/alumni

Social Media:  Pepperdine Alumni

 @PeppAlum  @pepperdinealumni

FINANCIAL INFORMATION

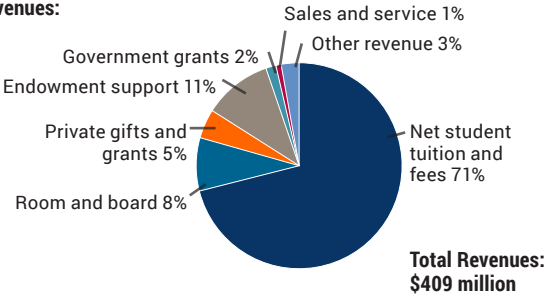
Assets:

- The University's total assets are approximately \$2.09 billion, an increase of approximately \$126 million more than fiscal year 2019.
- Assets of \$2.09 billion include \$487.3 million in campus properties.

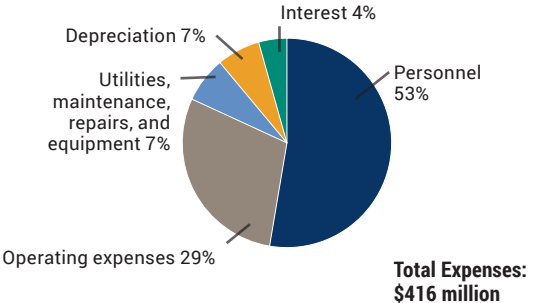
Endowment Income:

- Total endowment reported was approximately \$908 million.
- The endowment generated \$44.1 million of operational support during fiscal year 2020.

Revenues:



Expenses:



Source: Consolidated Financial Statements 7/31/2020

EXECUTIVE LEADERSHIP

James A. Gash (JD '93)
President and
Chief Executive Officer

Sara Young Jackson ('74)
Chancellor

Jay L. Brewster
Provost and
Chief Academic Officer

Lauren W. Cosentino ('97, MBA '12)
Vice President for
Advancement and Chief
Development Officer

Daniel J. DeWalt
Vice President and
Chief of Staff

Marc P. Goodman
General Counsel

Gary A. Hanson (JD '80)
Executive Vice President

Connie Horton ('82)
Vice President for
Student Affairs

Lee Kats
Vice Provost

Matthew J. Midura ('97, MA '05)
Associate Vice President
for Integrated Marketing
Communications and Acting
Chief Marketing Officer

L. Timothy Perrin
Senior Vice President for
Strategic Implementation

Phil E. Phillips ('88, JD '92)
Senior Vice President for
Administration and Chief
Operating Officer

Jeff Pippin (MBA '83)
Senior Vice President for
Investments and Chief
Investment Officer

Greg G. Ramirez ('03)
Chief Financial Officer

J. Goosby Smith
Vice President for
Community Belonging and
Chief Diversity Officer

Nicolle Taylor ('98, JD '02)
Vice President and Chief
Business Officer



CONTACT INFORMATION

Malibu Main Campus

Pepperdine University
24255 Pacific Coast Highway
Malibu, CA 90263
310.506.4000

Calabasas Campus

26750 Agoura Road
Calabasas, CA 91302
818.702.1000

Irvine Graduate Campus

Lakeshore Towers III
18111 Von Karman Avenue
Irvine, CA 92612
949.223.2500

Washington, DC Campus

2011 Pennsylvania Avenue, NW
Washington, DC 20006
202.776.5320

West Los Angeles Graduate Campus

6100 Center Drive
Los Angeles, CA 90045
310.568.5737
310.568.5500 Graziadio
310.568.5600 GSEP

Online: pepperdine.edu



Pepperdine



@pepperdine



@pepperdine



Pepperdine University



pepperdineuniversity



Pepperdine University

Useful Phone Numbers:

Malibu campus operator	310.506.4000
Human Resources	310.506.4397
Emergencies	310.506.4441
Libraries	310.506.7273
Malibu campus tours	310.506.4392
Public Relations	818.702.1401
Public Safety	310.506.4700
Road conditions (Malibu)	310.506.ROAD
Smothers Theatre	310.506.4522

Donate Online: pepperdine.edu/giving





Sustainability Facts:

Pepperdine maintains more than 500 acres of its 832-acre campus in a native state, which eliminates the need for fertilizer, irrigation, and pesticides, while reducing air pollution, minimizing erosion, improving water quality, and providing a pristine environment within the Santa Monica Mountains.



FSC

MIX
Paper

FSC® C019804



PEPPERDINE UNIVERSITY

24255 Pacific Coast Highway

Malibu, California 90263

310.506.4000

pepperdine.edu